

Stainless Weld Fittings





Stainless Weld Fittings

Specifications

- Stainless weld fittings conform to ASTM A403 Grade 304/304L & 316/316L, ASTM A960, MSS SP-43
- CMTR's available upon request
- Stainless weld fitting dimensions conform to ASME B16.9 (except Wall) and MSS SP-43
- Manufacturing facility is ISO 9001:2008
- Independent lab verification that fittings meet applicable chemical & mechanical properties



SCI ProPak™ System

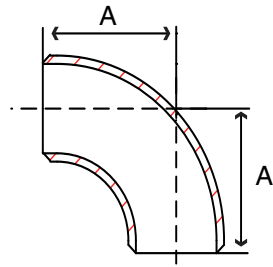


Fig. S2014LE & S2016LE - 90° Elbow Long Radius

| Size in | Part Number | | A in | Weight lb |
|------------|-------------|------------|---------|--------------|
| | 304/304L | 316/316L | | |
| 1/2 | S2014LE004 | S2016LE004 | 1.50 | 0.13 |
| 3/4 | S2014LE006 | S2016LE006 | 1.50 | 0.16 |
| 1 | S2014LE010 | S2016LE010 | 1.50 | 0.38 |
| 1-1/4 | S2014LE012 | S2016LE012 | 1.88 | 0.50 |
| 1-1/2 | S2014LE014 | S2016LE014 | 2.25 | 0.75 |
| 2 | S2014LE020 | S2016LE020 | 3.00 | 1.10 |
| 2-1/2 | S2014LE024 | S2016LE024 | 3.75 | 1.88 |
| 3 | S2014LE030 | S2016LE030 | 4.50 | 2.50 |
| 4 | S2014LE040 | S2016LE040 | 6.00 | 4.30 |
| 5 | S2014LE050 | S2016LE050 | 7.50 | 7.40 |
| 6 | S2014LE060 | S2016LE060 | 9.00 | 11.00 |

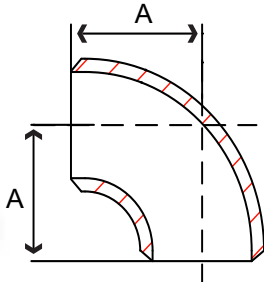


Fig. S2014E & S2016E - 90° Elbow Short Radius

| Size in | Part Number | | A in | Weight lb |
|------------|-------------|------------|---------|--------------|
| | 304/304L | 316/316L | | |
| 1 | S2014E 010 | S2016E 010 | 1.00 | 0.23 |
| 1-1/4 | S2014E 012 | S2016E 012 | 1.25 | 0.38 |
| 1-1/2 | S2014E 014 | S2016E 014 | 1.50 | 0.49 |
| 2 | S2014E 020 | S2016E 020 | 2.00 | 0.81 |
| 2-1/2 | S2014E 024 | S2016E 024 | 2.50 | 1.36 |
| 3 | S2014E 030 | S2016E 030 | 3.00 | 2.17 |
| 4 | S2014E 040 | S2016E 040 | 4.00 | 3.80 |
| 5 | S2014E 050 | S2016E 050 | 5.00 | 5.19 |
| 6 | S2014E 060 | S2016E 060 | 6.00 | 7.45 |

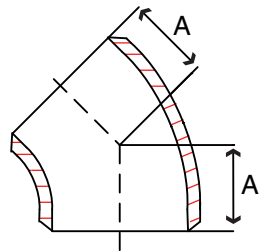


Fig. S2014F & S2016F - 45° Elbow

| Size in | Part Number | | A in | Weight lb |
|------------|-------------|------------|---------|--------------|
| | 304/304L | 316/316L | | |
| 1/2 | S2014F 004 | S2016F 004 | 0.62 | 0.07 |
| 3/4 | S2014F 006 | S2016F 006 | 0.75 | 0.07 |
| 1 | S2014F 010 | S2016F 010 | 0.86 | 0.1 |
| 1-1/4 | S2014F 012 | S2016F 012 | 1.00 | 0.2 |
| 1-1/2 | S2014F 014 | S2016F 014 | 1.12 | 0.3 |
| 2 | S2014F 020 | S2016F 020 | 1.36 | 0.5 |
| 2-1/2 | S2014F 024 | S2016F 024 | 1.75 | 0.9 |
| 3 | S2014F 030 | S2016F 030 | 2.00 | 1.3 |
| 4 | S2014F 040 | S2016F 040 | 2.50 | 2.3 |
| 5 | S2014F 050 | S2016F 050 | 3.12 | 4.0 |
| 6 | S2014F 060 | S2016F 060 | 3.75 | 5.7 |

Fig. S2014T & S2016T - Tee

| Size in | Part Number | | A in | Weight lb |
|------------|-------------|------------|---------|--------------|
| | 304/304L | 316/316L | | |
| 1/2 | S2014T 004 | S2016T 004 | 1.00 | 0.2 |
| 3/4 | S2014T 006 | S2016T 006 | 1.13 | 0.3 |
| 1 | S2014T 010 | S2016T 010 | 1.50 | 0.5 |
| 1-1/4 | S2014T 012 | S2016T 012 | 1.88 | 1.1 |
| 1-1/2 | S2014T 014 | S2016T 014 | 2.25 | 1.6 |
| 2 | S2014T 020 | S2016T 020 | 2.50 | 1.7 |
| 2-1/2 | S2014T 024 | S2016T 024 | 3.00 | 2.8 |
| 3 | S2014T 030 | S2016T 030 | 3.38 | 3.8 |
| 4 | S2014T 040 | S2016T 040 | 4.12 | 5.8 |
| 5 | S2014T 050 | S2016T 050 | 4.88 | 10.3 |
| 6 | S2014T 060 | S2016T 060 | 5.62 | 14.6 |

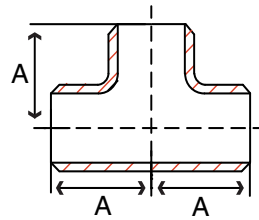


Fig. S2014X & S2016X - Cross

| Size in | Part Number | | A in | Weight lb |
|------------|-------------|------------|---------|--------------|
| | 304/304L | 316/316L | | |
| 1-1/2 | S2014X 014 | S2016X 014 | 2.25 | 1.7 |
| 2 | S2014X 020 | S2016X 020 | 2.50 | 2.1 |
| 3 | S2014X 030 | S2016X 030 | 3.38 | 4.4 |
| 4 | S2014X 040 | S2016X 040 | 4.12 | 8.7 |
| 6 | S2014X 060 | S2016X 060 | 5.62 | 20.4 |

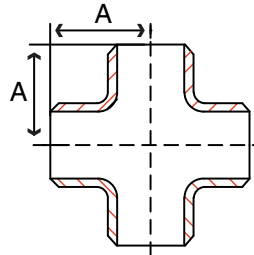
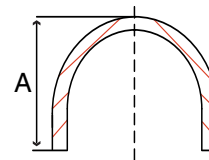


Fig. S2014C & S2016C - Cap

| Size in | Part Number | | A in | Weight lb |
|------------|-------------|------------|---------|--------------|
| | 304/304L | 316/316L | | |
| 1/2 | S2014C 004 | S2016C 004 | 1.00 | 0.07 |
| 3/4 | S2014C 006 | S2016C 006 | 1.00 | 0.1 |
| 1 | S2014C 010 | S2016C 010 | 1.50 | 0.1 |
| 1-1/4 | S2014C 012 | S2016C 012 | 1.50 | 0.2 |
| 1-1/2 | S2014C 014 | S2016C 014 | 1.50 | 0.2 |
| 2 | S2014C 020 | S2016C 020 | 1.50 | 0.4 |
| 2-1/2 | S2014C 024 | S2016C 024 | 1.50 | 0.5 |
| 3 | S2014C 030 | S2016C 030 | 2.00 | 0.8 |
| 4 | S2014C 040 | S2016C 040 | 2.50 | 1.2 |
| 5 | S2014C 050 | S2016C 050 | 3.00 | 2.4 |
| 6 | S2014C 060 | S2016C 060 | 3.50 | 3.1 |



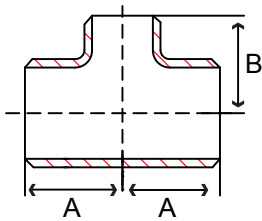


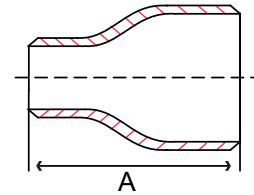
Fig. S2014RT & S2016RT - Reducing Tee

| Size in | Part Number | | A in | B in | Weight lb |
|---------------|---------------|---------------|---------|---------|--------------|
| | 304/304L | 316/316L | | | |
| 3/4 x 1/2 | S2014RT006004 | S2016RT006004 | 1.13 | 1.13 | 0.2 |
| 1 x 1/2 | S2014RT010004 | S2016RT010004 | 1.50 | 1.50 | 0.5 |
| 1 x 3/4 | S2014RT010006 | S2016RT010006 | 1.50 | 1.50 | 0.5 |
| 1-1/4 x 3/4 | S2014RT012006 | S2016RT012006 | 1.88 | 1.88 | 0.9 |
| 1-1/4 x 1 | S2014RT012010 | S2016RT012010 | 1.88 | 1.88 | 0.9 |
| 1-1/2 x 1/2 | S2014RT014004 | S2016RT014004 | 2.25 | 2.25 | 1.2 |
| 1-1/2 x 3/4 | S2014RT014006 | S2016RT014006 | 2.25 | 2.25 | 1.2 |
| 1-1/2 x 1 | S2014RT014010 | S2016RT014010 | 2.25 | 2.25 | 1.3 |
| 1-1/2 x 1-1/4 | S2014RT014012 | S2016RT014012 | 2.25 | 2.25 | 1.3 |
| 2 x 1/2 | S2014RT020004 | S2014RT020004 | 2.50 | 1.75 | 1.5 |
| 2 x 3/4 | S2014RT020006 | S2016RT020006 | 2.50 | 1.75 | 1.5 |
| 2 x 1 | S2014RT020010 | S2016RT020010 | 2.50 | 2.00 | 1.6 |
| 2 x 1-1/4 | S2014RT020012 | S2016RT020012 | 2.50 | 2.25 | 1.6 |
| 2 x 1-1/2 | S2014RT020014 | S2016RT020014 | 2.50 | 2.38 | 1.6 |
| 2-1/2 x 1 | S2014RT024010 | S2016RT024010 | 3.00 | 2.25 | 2.6 |
| 2-1/2 x 1-1/2 | S2014RT024014 | S2016RT024014 | 3.00 | 2.63 | 2.7 |
| 2-1/2 x 2 | S2014RT024020 | S2016RT024020 | 3.00 | 2.75 | 2.7 |
| 3 x 1 | S2014RT030010 | S2016RT030010 | 3.38 | 2.63 | 3.2 |
| 3 x 1-1/4 | S2014RT030012 | S2016RT030012 | 3.38 | 2.75 | 3.3 |
| 3 x 1-1/2 | S2014RT030014 | S2016RT030014 | 3.38 | 2.88 | 3.3 |
| 3 x 2 | S2014RT030020 | S2016RT030020 | 3.38 | 3.00 | 3.4 |
| 3 x 2-1/2 | S2014RT030024 | S2016RT030024 | 3.38 | 3.25 | 3.5 |
| 4 x 1-1/2 | S2014RT040014 | S2016RT040014 | 4.13 | 3.38 | 6.4 |
| 4 x 2 | S2014RT040020 | S2016RT040020 | 4.13 | 3.50 | 6.4 |
| 4 x 2-1/2 | S2014RT040024 | S2016RT040024 | 4.13 | 3.75 | 6.5 |
| 4 x 3 | S2014RT040030 | S2016RT040030 | 4.13 | 3.88 | 6.7 |
| 5 x 3 | S2014RT050030 | S2016RT050030 | 4.88 | 4.38 | 11.5 |
| 5 x 4 | S2014RT050040 | S2016RT050040 | 4.88 | 4.63 | 12.1 |
| 6 x 2 | S2014RT060020 | S2016RT060020 | 5.63 | 4.75 | 14.9 |
| 6 x 2-1/2 | S2014RT060024 | S2016RT060024 | 5.63 | 4.75 | 14.9 |
| 6 x 3 | S2014RT060030 | S2016RT060030 | 5.63 | 4.88 | 15.1 |
| 6 x 4 | S2014RT060040 | S2016RT060040 | 5.63 | 5.13 | 15.6 |



Fig. S2014CR & S2016CR - Concentric Reducer

| Size in | Part Number | | A in | Weight lb |
|---------------|---------------|---------------|---------|--------------|
| | 304/304L | 316/316L | | |
| 3/4 x 1/2 | S2014CR006004 | S2016CR006004 | 1.5 | 0.2 |
| 1 x 1/2 | S2014CR010004 | S2016CR010004 | 2.0 | 0.2 |
| 1 x 3/4 | S2014CR010006 | S2016CR010006 | 2.0 | 0.2 |
| 1-1/4 x 1/2 | S2014CR012004 | S2016CR012004 | 2.0 | 0.3 |
| 1-1/4 x 3/4 | S2014CR012006 | S2016CR012006 | 2.0 | 0.3 |
| 1-1/4 x 1 | S2014CR012010 | S2016CR012010 | 2.0 | 0.3 |
| 1-1/2 x 1/2 | S2014CR014004 | S2016CR014004 | 2.5 | 0.3 |
| 1-1/2 x 3/4 | S2014CR014006 | S2016CR014006 | 2.5 | 0.3 |
| 1-1/2 x 1 | S2014CR014010 | S2016CR014010 | 2.5 | 0.4 |
| 1-1/2 x 1-1/4 | S2014CR014012 | S2016CR014012 | 2.5 | 0.4 |
| 2 x 1/2 | S2014CR020004 | S2016CR020004 | 3.0 | 0.5 |
| 2 x 3/4 | S2014CR020006 | S2016CR020006 | 3.0 | 0.5 |
| 2 x 1 | S2014CR020010 | S2016CR020010 | 3.0 | 0.6 |
| 2 x 1-1/4 | S2014CR020012 | S2016CR020012 | 3.0 | 0.6 |
| 2 x 1-1/2 | S2014CR020014 | S2016CR020014 | 3.0 | 0.6 |
| 2-1/2 x 1 | S2014CR024010 | S2016CR024010 | 3.5 | 0.8 |
| 2-1/2 x 1-1/4 | S2014CR024012 | S2016CR024012 | 3.5 | 0.9 |
| 2-1/2 x 1-1/2 | S2014CR024014 | S2016CR024014 | 3.5 | 0.9 |
| 2-1/2 x 2 | S2014CR024020 | S2016CR024020 | 3.5 | 1.0 |
| 3 x 1 | S2014CR030010 | S2016CR030010 | 3.5 | 1.0 |
| 3 x 1-1/4 | S2014CR030012 | S2016CR030012 | 3.5 | 1.0 |
| 3 x 1-1/2 | S2014CR030014 | S2016CR030014 | 3.5 | 1.1 |
| 3 x 2 | S2014CR030020 | S2016CR030020 | 3.5 | 1.2 |
| 3 x 2-1/2 | S2014CR030024 | S2016CR030024 | 3.5 | 1.3 |
| 4 x 1-1/2 | S2014CR040014 | S2016CR040014 | 4.0 | 1.7 |
| 4 x 2 | S2014CR040020 | S2016CR040020 | 4.0 | 1.5 |
| 4 x 2-1/2 | S2014CR040024 | S2016CR040024 | 4.0 | 1.7 |
| 4 x 3 | S2014CR040030 | S2016CR040030 | 4.0 | 1.8 |
| 5 x 3 | S2014CR050030 | S2016CR050030 | 5.0 | 3.0 |
| 5 x 4 | S2014CR050040 | S2016CR050040 | 5.0 | 3.2 |
| 6 x 2 | S2014CR060020 | S2016CR060020 | 5.5 | 3.2 |
| 6 x 2-1/2 | S2014CR060024 | S2016CR060024 | 5.5 | 3.2 |
| 6 x 3 | S2014CR060030 | S2016CR060030 | 5.5 | 3.3 |
| 6 x 4 | S2014CR060040 | S2016CR060040 | 5.5 | 4.2 |
| 6 x 5 | S2014CR060050 | S2016CR060050 | 5.5 | 4.3 |



Pro Pak System

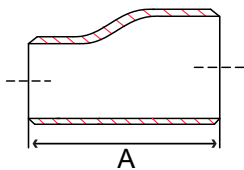


Fig. S2014ER & S2016ER - Eccentric Reducer

| Size in | Part Number | | A in | Weight lb |
|---------------|---------------|---------------|---------|--------------|
| | 304/304L | 316/316L | | |
| 3/4 x 1/2 | S2014ER006004 | S2016ER006004 | 1.5 | 0.2 |
| 1 x 1/2 | S2014ER010004 | S2016ER010004 | 2.0 | 0.2 |
| 1 x 3/4 | S2014ER010006 | S2016ER010006 | 2.0 | 0.2 |
| 1-1/4 x 3/4 | S2014ER012006 | S2016ER012006 | 2.0 | 0.3 |
| 1-1/4 x 1 | S2014ER012010 | S2016ER012010 | 2.0 | 0.3 |
| 1-1/2 x 1/2 | S2014ER014004 | S2016ER014004 | 2.5 | 0.3 |
| 1-1/2 x 3/4 | S2014ER014006 | S2016ER014006 | 2.5 | 0.3 |
| 1-1/2 x 1 | S2014ER014010 | S2016ER014010 | 2.5 | 0.4 |
| 1-1/2 x 1-1/4 | S2014ER014012 | S2016ER014012 | 2.5 | 0.4 |
| 2 x 1/2 | S2014ER020004 | S2016ER020004 | 3.0 | 0.5 |
| 2 x 3/4 | S2014ER020006 | S2016ER020006 | 3.0 | 0.5 |
| 2 x 1 | S2014ER020010 | S2016ER020010 | 3.0 | 0.6 |
| 2 x 1-1/4 | S2014ER020012 | S2016ER020012 | 3.0 | 0.6 |
| 2 x 1-1/2 | S2014ER020014 | S2016ER020014 | 3.0 | 0.6 |
| 2-1/2 x 1 | S2014ER024010 | S2016ER024010 | 3.5 | 0.8 |
| 2-1/2 x 1-1/2 | S2014ER024014 | S2016ER024014 | 3.5 | 0.9 |
| 2-1/2 x 2 | S2014ER024020 | S2016ER024020 | 3.5 | 1.0 |
| 3 x 1 | S2014ER030010 | S2016ER030010 | 3.5 | 1.0 |
| 3 x 1-1/4 | S2014ER030012 | S2016ER030012 | 3.5 | 1.0 |
| 3 x 1-1/2 | S2014ER030014 | S2016ER030014 | 3.5 | 1.1 |
| 3 x 2 | S2014ER030020 | S2016ER030020 | 3.5 | 1.2 |
| 3 x 2-1/2 | S2014ER030024 | S2016ER030024 | 3.5 | 1.3 |
| 4 x 1-1/2 | S2014ER040014 | S2016ER040014 | 4.0 | 1.7 |
| 4 x 2 | S2014ER040020 | S2016ER040020 | 4.0 | 1.5 |
| 4 x 2-1/2 | S2014ER040024 | S2016ER040024 | 4.0 | 1.7 |
| 4 x 3 | S2014ER040030 | S2016ER040030 | 4.0 | 1.8 |
| 5 x 3 | S2014ER050030 | S2016ER050030 | 5.0 | 3.0 |
| 5 x 4 | S2014ER050040 | S2016ER050040 | 5.0 | 3.2 |
| 6 x 2 | S2014ER060020 | S2016ER060020 | 5.5 | 3.2 |
| 6 x 2-1/2 | S2014ER060024 | S2016ER060024 | 5.5 | 3.2 |
| 6 x 3 | S2014ER060030 | S2016ER060030 | 5.5 | 3.3 |
| 6 x 4 | S2014ER060040 | S2016ER060040 | 5.5 | 4.2 |
| 6 x 5 | S2014ER060050 | S2016ER060050 | 5.5 | 4.3 |

**Order On-Line
at www.smithcooper.com**

Fig. S2044LE & S2046LE - 90° Elbow Long Radius

| Size in | Part Number | | A in | Weight lb |
|------------|-------------|------------|---------|--------------|
| | 304/304L | 316/316L | | |
| 1/2 | S2044LE004 | S2046LE004 | 1.50 | 0.18 |
| 3/4 | S2044LE006 | S2046LE006 | 1.50 | 0.19 |
| 1 | S2044LE010 | S2046LE010 | 1.50 | 0.40 |
| 1-1/4 | S2044LE012 | S2046LE012 | 1.88 | 0.60 |
| 1-1/2 | S2044LE014 | S2046LE014 | 2.25 | 0.90 |
| 2 | S2044LE020 | S2046LE020 | 3.00 | 1.60 |
| 2-1/2 | S2044LE024 | S2046LE024 | 3.75 | 3.25 |
| 3 | S2044LE030 | S2046LE030 | 4.50 | 5.00 |
| 4 | S2044LE040 | S2046LE040 | 6.00 | 9.00 |
| 5 | S2044LE050 | S2046LE050 | 7.50 | 15.50 |
| 6 | S2044LE060 | S2046LE060 | 9.00 | 24.50 |

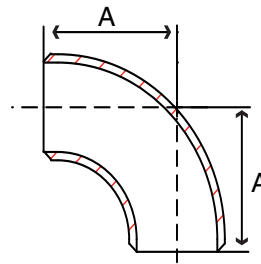


Fig. S2044E & S2046E - 90° Elbow Short Radius

| Size in | Part Number | | A in | Weight lb |
|------------|-------------|------------|---------|--------------|
| | 304/304L | 316/316L | | |
| 1 | S2044E 010 | S2046E 010 | 1.00 | 0.26 |
| 1-1/4 | S2044E 012 | S2046E 012 | 1.25 | 0.45 |
| 1-1/2 | S2044E 014 | S2046E 014 | 1.50 | 0.63 |
| 2 | S2044E 020 | S2046E 020 | 2.00 | 1.13 |
| 2-1/2 | S2044E 024 | S2046E 024 | 2.50 | 2.25 |
| 3 | S2044E 030 | S2046E 030 | 3.00 | 3.31 |
| 4 | S2044E 040 | S2046E 040 | 4.00 | 6.88 |
| 5 | S2044E 050 | S2046E 050 | 5.00 | 11.63 |
| 6 | S2044E 060 | S2046E 060 | 6.00 | 17.50 |

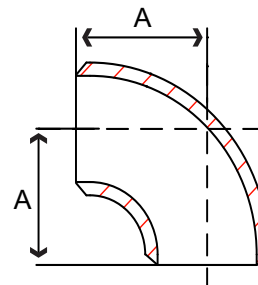
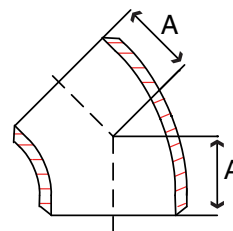


Fig. S2044F & S2046F - 45° Elbow

| Size in | Part Number | | A in | Weight lb |
|------------|-------------|------------|---------|--------------|
| | 304/304L | 316/316L | | |
| 1/2 | S2044F 004 | S2046F 004 | 0.62 | 0.09 |
| 3/4 | S2044F 006 | S2046F 006 | 0.75 | 0.09 |
| 1 | S2044F 010 | S2046F 010 | 0.86 | 0.1 |
| 1-1/4 | S2044F 012 | S2046F 012 | 1.00 | 0.2 |
| 1-1/2 | S2044F 014 | S2046F 014 | 1.12 | 0.4 |
| 2 | S2044F 020 | S2046F 020 | 1.36 | 0.7 |
| 2-1/2 | S2044F 024 | S2046F 024 | 1.75 | 1.4 |
| 3 | S2044F 030 | S2046F 030 | 2.00 | 2.3 |
| 4 | S2044F 040 | S2046F 040 | 2.50 | 4.4 |
| 5 | S2044F 050 | S2046F 050 | 3.12 | 7.5 |
| 6 | S2044F 060 | S2046F 060 | 3.75 | 11.8 |



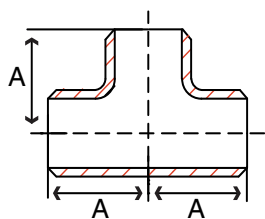


Fig. S2044T & S2046T - Tee

| Size in | Part Number | | A in | Weight lb |
|------------|-------------|------------|---------|--------------|
| | 304/304L | 316/316L | | |
| 1/2 | S2044T 004 | S2046T 004 | 1.00 | 0.3 |
| 3/4 | S2044T 006 | S2046T 006 | 1.13 | 0.4 |
| 1 | S2044T 010 | S2046T 010 | 1.50 | 0.6 |
| 1-1/4 | S2044T 012 | S2046T 012 | 1.88 | 1.1 |
| 1-1/2 | S2044T 014 | S2046T 014 | 2.25 | 1.6 |
| 2 | S2044T 020 | S2046T 020 | 2.50 | 4.1 |
| 2-1/2 | S2044T 024 | S2046T 024 | 3.00 | 6.3 |
| 3 | S2044T 030 | S2046T 030 | 3.38 | 8.4 |
| 4 | S2044T 040 | S2046T 040 | 4.12 | 13.2 |
| 5 | S2044T 050 | S2046T 050 | 4.88 | 21.9 |
| 6 | S2044T 060 | S2046T 060 | 5.62 | 34.6 |

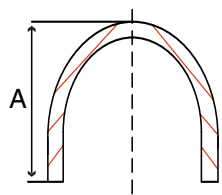


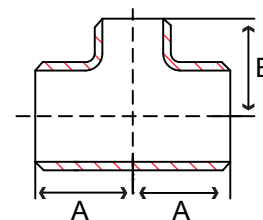
Fig. S2044C & S2046C - Cap

| Size in | Part Number | | A in | Weight lb |
|------------|-------------|------------|---------|--------------|
| | 304/304L | 316/316L | | |
| 1/2 | S2044C 004 | S2046C 004 | 1.00 | 0.07 |
| 3/4 | S2044C 006 | S2046C 006 | 1.00 | 0.1 |
| 1 | S2044C 010 | S2046C 010 | 1.50 | 0.2 |
| 1-1/4 | S2044C 012 | S2046C 012 | 1.50 | 0.3 |
| 1-1/2 | S2044C 014 | S2046C 014 | 1.50 | 0.3 |
| 2 | S2044C 020 | S2046C 020 | 1.50 | 0.5 |
| 2-1/2 | S2044C 024 | S2046C 024 | 1.50 | 0.8 |
| 3 | S2044C 030 | S2046C 030 | 2.00 | 1.4 |
| 4 | S2044C 040 | S2046C 040 | 2.50 | 2.5 |
| 5 | S2044C 050 | S2046C 050 | 3.00 | 4.1 |
| 6 | S2044C 060 | S2046C 060 | 3.50 | 6.4 |



Fig. S2044RT & S2046RT - Reducing Tee

| Size in | Part Number | | A in | B in | Weight lb |
|---------------|---------------|---------------|---------|---------|--------------|
| | 304/304L | 316/316L | | | |
| 3/4 x 1/2 | S2044RT006004 | S2046RT006004 | 1.13 | 1.13 | 0.3 |
| 1 x 1/2 | S2044RT010004 | S2046RT010004 | 1.50 | 1.50 | 0.5 |
| 1 x 3/4 | S2044RT010006 | S2046RT010006 | 1.50 | 1.50 | 0.5 |
| 1-1/4 x 3/4 | S2044RT012006 | S2046RT012006 | 1.88 | 1.88 | 1.1 |
| 1-1/4 x 1 | S2044RT012010 | S2046RT012010 | 1.88 | 1.88 | 1.1 |
| 1-1/2 x 1/2 | S2044RT014004 | S2046RT014004 | 2.25 | 2.25 | 1.6 |
| 1-1/2 x 3/4 | S2044RT014006 | S2046RT014006 | 2.25 | 2.25 | 1.6 |
| 1-1/2 x 1 | S2044RT014010 | S2046RT014010 | 2.25 | 2.25 | 1.6 |
| 1-1/2 x 1-1/4 | S2044RT014012 | S2046RT014012 | 2.25 | 2.25 | 1.7 |
| 2 x 1/2 | S2044RT020004 | S2046RT020004 | 2.50 | 1.75 | 2.4 |
| 2 x 3/4 | S2044RT020006 | S2046RT020006 | 2.50 | 1.75 | 2.4 |
| 2 x 1 | S2044RT020010 | S2046RT020010 | 2.50 | 2.00 | 2.4 |
| 2 x 1-1/4 | S2044RT020012 | S2046RT020012 | 2.50 | 2.25 | 2.4 |
| 2 x 1-1/2 | S2044RT020014 | S2046RT020014 | 2.50 | 2.38 | 2.5 |
| 2-1/2 x 1 | S2044RT024010 | S2046RT024010 | 3.0 | 2.25 | 4.1 |
| 2-1/2 x 1-1/2 | S2044RT024014 | S2046RT024014 | 3.0 | 2.63 | 4.2 |
| 2-1/2 x 2 | S2044RT024020 | S2046RT024020 | 3.0 | 2.75 | 4.3 |
| 3 x 1 | S2044RT030010 | S2046RT030010 | 3.38 | 2.63 | 6.1 |
| 3 x 1-1/4 | S2044RT030012 | S2046RT030012 | 3.38 | 2.75 | 6.2 |
| 3 x 1-1/2 | S2044RT030014 | S2046RT030014 | 3.38 | 2.88 | 6.2 |
| 3 x 2 | S2044RT030020 | S2046RT030020 | 3.38 | 3.00 | 6.4 |
| 3 x 2-1/2 | S2044RT030024 | S2046RT030024 | 3.38 | 3.25 | 6.5 |
| 4 x 1-1/2 | S2044RT040014 | S2046RT040014 | 4.13 | 3.38 | 9.7 |
| 4 x 2 | S2044RT040020 | S2046RT040020 | 4.13 | 3.25 | 9.8 |
| 4 x 2-1/2 | S2044RT040024 | S2046RT040024 | 4.13 | 3.75 | 10.0 |
| 4 x 3 | S2044RT040030 | S2046RT040030 | 4.13 | 3.88 | 10.2 |
| 5 x 3 | S2044RT050030 | S2046RT050030 | 4.88 | 4.38 | 17.8 |
| 5 x 4 | S2044RT050040 | S2046RT050040 | 4.88 | 4.63 | 18.6 |
| 6 x 2 | S2044RT060020 | S2046RT060020 | 5.63 | 4.75 | 20.3 |
| 6 x 2-1/2 | S2044RT060024 | S2046RT060024 | 5.63 | 4.75 | 20.3 |
| 6 x 3 | S2044RT060030 | S2046RT060030 | 5.63 | 4.88 | 26.3 |
| 6 x 4 | S2044RT060040 | S2046RT060040 | 5.63 | 5.13 | 21.3 |
| 6 x 5 | S2044RT060050 | S2046RT060050 | 5.63 | 5.38 | 21.8 |



Be sure to check out the Pipe Section starting on page 233

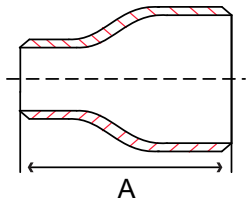


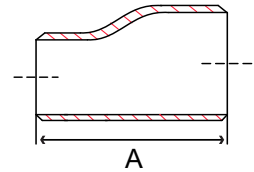
Fig. S2044CR & S2046CR - Concentric Reducer

| Size in | Part Number | | A in | Weight lb |
|---------------|---------------|---------------|---------|--------------|
| | 304/304L | 316/316L | | |
| 3/4 x 1/2 | S2044CR006004 | S2046CR006004 | 1.5 | 0.3 |
| 1 x 1/2 | S2044CR010004 | S2046CR010004 | 2.0 | 0.3 |
| 1 x 3/4 | S2044CR010006 | S2046CR010006 | 2.0 | 0.3 |
| 1-1/4 x 3/4 | S2044CR012006 | S2046CR012006 | 2.0 | 0.4 |
| 1-1/4 x 1 | S2044CR012010 | S2046CR012010 | 2.0 | 0.4 |
| 1-1/2 x 1/2 | S2044CR014004 | S2046CR014004 | 2.5 | 0.5 |
| 1-1/2 x 3/4 | S2044CR014006 | S2046CR014006 | 2.5 | 0.5 |
| 1-1/2 x 1 | S2044CR014010 | S2046CR014010 | 2.5 | 0.5 |
| 1-1/2 x 1-1/4 | S2044CR014012 | S2046CR014012 | 2.5 | 0.6 |
| 2 x 1/2 | S2044CR020004 | S2046CR020004 | 3.0 | 0.8 |
| 2 x 3/4 | S2044CR020006 | S2046CR020006 | 3.0 | 0.8 |
| 2 x 1 | S2044CR020010 | S2046CR020010 | 3.0 | 0.8 |
| 2 x 1-1/4 | S2044CR020012 | S2046CR020012 | 3.0 | 0.9 |
| 2 x 1-1/2 | S2044CR020014 | S2046CR020014 | 3.0 | 0.9 |
| 2-1/2 x 1 | S2044CR024010 | S2046CR024010 | 3.5 | 1.4 |
| 2-1/2 x 1-1/4 | S2044CR024012 | S2046CR024012 | 3.5 | 1.6 |
| 2-1/2 x 1-1/2 | S2044CR024014 | S2046CR024014 | 3.5 | 1.6 |
| 2-1/2 x 2 | S2044CR024020 | S2046CR024020 | 3.5 | 1.7 |
| 3 x 1 | S2044CR030010 | S2046CR030010 | 3.5 | 1.8 |
| 3 x 1-1/4 | S2044CR030012 | S2046CR030012 | 3.5 | 1.8 |
| 3 x 1-1/2 | S2044CR030014 | S2046CR030014 | 3.5 | 2.0 |
| 3 x 2 | S2044CR030020 | S2046CR030020 | 3.5 | 2.2 |
| 3 x 2-1/2 | S2044CR030024 | S2046CR030024 | 3.5 | 2.3 |
| 4 x 1-1/2 | S2044CR040014 | S2046CR040014 | 4.0 | 3.3 |
| 4 x 2 | S2044CR040020 | S2046CR040020 | 4.0 | 3.0 |
| 4 x 2-1/2 | S2044CR040024 | S2046CR040024 | 4.0 | 3.4 |
| 4 x 3 | S2044CR040030 | S2046CR040030 | 4.0 | 3.6 |
| 5 x 3 | S2044CR050030 | S2046CR050030 | 5.0 | 6.0 |
| 5 x 4 | S2044CR050040 | S2046CR050040 | 5.0 | 6.4 |
| 6 x 2 | S2044CR060020 | S2046CR060020 | 5.5 | 6.5 |
| 6 x 2-1/2 | S2044CR060024 | S2046CR060024 | 5.5 | 6.5 |
| 6 x 3 | S2044CR060030 | S2046CR060030 | 5.5 | 8.3 |
| 6 x 4 | S2044CR060040 | S2046CR060040 | 5.5 | 8.9 |
| 6 x 5 | S2044CR060050 | S2046CR060050 | 5.5 | 8.9 |

**Order On-Line
at www.smithcooper.com**

Fig. S2044ER & S2046ER - Eccentric Reducer

| Size in | Part Number | | A in | Weight lb |
|---------------|---------------|---------------|---------|--------------|
| | 304/304L | 316/316L | | |
| 3/4 x 1/2 | S2044ER006004 | S2046ER006004 | 1.5 | 0.3 |
| 1 x 1/2 | S2044ER010004 | S2046ER010004 | 2.0 | 0.3 |
| 1 x 3/4 | S2044ER010006 | S2046ER010006 | 2.0 | 0.3 |
| 1-1/4 x 3/4 | S2044ER012006 | S2046ER012006 | 2.0 | 0.4 |
| 1-1/4 x 1 | S2044ER012010 | S2046ER012010 | 2.0 | 0.4 |
| 1-1/2 x 1/2 | S2044ER014004 | S2046ER014004 | 2.5 | 0.5 |
| 1-1/2 x 3/4 | S2044ER014006 | S2046ER014006 | 2.5 | 0.5 |
| 1-1/2 x 1 | S2044ER014010 | S2046ER014010 | 2.5 | 0.5 |
| 1-1/2 x 1-1/4 | S2044ER014012 | S2046ER014012 | 2.5 | 0.6 |
| 2 x 1/2 | S2044ER020004 | S2046ER020004 | 3.0 | 0.8 |
| 2 x 3/4 | S2044ER020006 | S2046ER020006 | 3.0 | 0.8 |
| 2 x 1 | S2044ER020010 | S2046ER020010 | 3.0 | 0.8 |
| 2 x 1-1/4 | S2044ER020012 | S2046ER020012 | 3.0 | 0.9 |
| 2 x 1-1/2 | S2044ER020014 | S2046ER020014 | 3.0 | 0.9 |
| 2-1/2 x 1 | S2044ER024010 | S2046ER024010 | 3.5 | 1.4 |
| 2-1/2 x 1-1/2 | S2044ER024014 | S2046ER024014 | 3.5 | 1.6 |
| 2-1/2 x 2 | S2044ER024020 | S2046ER024020 | 3.5 | 1.7 |
| 3 x 1 | S2044ER030010 | S2046ER030010 | 3.5 | 1.8 |
| 3 x 1-1/4 | S2044ER030012 | S2046ER030012 | 3.5 | 1.8 |
| 3 x 1-1/2 | S2044ER030014 | S2046ER030014 | 3.5 | 2.0 |
| 3 x 2 | S2044ER030020 | S2046ER030020 | 3.5 | 2.2 |
| 3 x 2-1/2 | S2044ER030024 | S2046ER030024 | 3.5 | 2.3 |
| 4 x 1-1/2 | S2044ER040014 | S2046ER040014 | 4.0 | 3.3 |
| 4 x 2 | S2044ER040020 | S2046ER040020 | 4.0 | 3.0 |
| 4 x 2-1/2 | S2044ER040024 | S2046ER040024 | 4.0 | 3.4 |
| 4 x 3 | S2044ER040030 | S2046ER040030 | 4.0 | 3.6 |
| 5 x 3 | S2044ER050030 | S2046ER050030 | 5.0 | 6.0 |
| 5 x 4 | S2044ER050040 | S2046ER050040 | 5.0 | 6.4 |
| 6 x 2 | S2044ER060020 | S2046ER060020 | 5.5 | 6.5 |
| 6 x 2-1/2 | S2044ER060024 | S2046ER060024 | 5.5 | 6.5 |
| 6 x 3 | S2044ER060030 | S2046ER060030 | 5.5 | 8.3 |
| 6 x 4 | S2044ER060040 | S2046ER060040 | 5.5 | 8.9 |
| 6 x 5 | S2044ER060050 | S2046ER060050 | 5.5 | 8.9 |



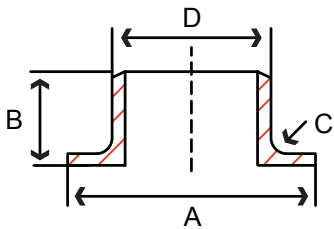
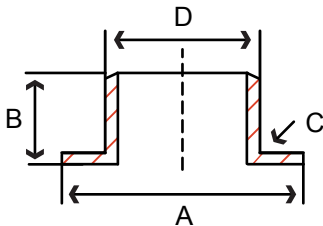


Fig. S2214MA & S2216MA - Sch 10 MSS Type A Stub End

| Size in | Part Number | | A in | B in | C (radius) in | D in | Weight lb |
|------------|-------------|------------|---------|---------|------------------|---------|--------------|
| | 304/304L | 316/316L | | | | | |
| 1/2 | S2214MA004 | S2216MA004 | 1.38 | 2.00 | 0.125 | 0.840 | 0.1 |
| 3/4 | S2214MA006 | S2216MA006 | 1.69 | 2.00 | 0.125 | 1.050 | 0.1 |
| 1 | S2214MA010 | S2216MA010 | 2.00 | 2.00 | 0.125 | 1.315 | 0.3 |
| 1-1/4 | S2214MA012 | S2216MA012 | 2.50 | 2.00 | 0.187 | 1.660 | 0.4 |
| 1-1/2 | S2214MA014 | S2216MA014 | 2.88 | 2.00 | 0.250 | 1.900 | 0.5 |
| 2 | S2214MA020 | S2216MA020 | 3.62 | 2.50 | 0.313 | 2.375 | 0.8 |
| 2-1/2 | S2214MA024 | S2216MA024 | 4.12 | 2.50 | 0.313 | 2.875 | 1.0 |
| 3 | S2214MA030 | S2216MA030 | 5.00 | 2.50 | 0.375 | 3.500 | 1.4 |
| 4 | S2214MA040 | S2216MA040 | 6.19 | 3.00 | 0.436 | 4.500 | 2.1 |
| 5 | S2214MA050 | S2216MA050 | 7.31 | 3.00 | 0.436 | 5.563 | 2.7 |
| 6 | S2214MA060 | S2216MA060 | 8.50 | 3.50 | 0.500 | 6.625 | 4.3 |

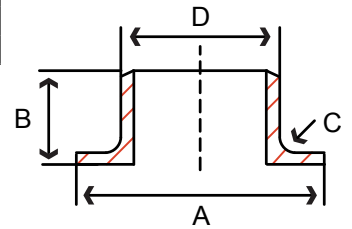
Fig. S2214MC & S2216MC - Sch 10 MSS Type C Stub End



| Size in | Part Number | | A in | B in | C (radius) in | D in | Weight lb |
|------------|-------------|------------|---------|---------|------------------|---------|--------------|
| | 304/304L | 316/316L | | | | | |
| 1/2 | S2214MC004 | S2216MC004 | 1.38 | 2.00 | 0.031 | 0.840 | 0.1 |
| 3/4 | S2214MC006 | S2216MC006 | 1.69 | 2.00 | 0.031 | 1.050 | 0.1 |
| 1 | S2214MC010 | S2216MC010 | 2.00 | 2.00 | 0.031 | 1.315 | 0.3 |
| 1-1/4 | S2214MC012 | S2216MC012 | 2.50 | 2.00 | 0.031 | 1.660 | 0.4 |
| 1-1/2 | S2214MC014 | S2216MC014 | 2.88 | 2.00 | 0.031 | 1.900 | 0.5 |
| 2 | S2214MC020 | S2216MC020 | 3.62 | 2.50 | 0.031 | 2.375 | 0.8 |
| 2-1/2 | S2214MC024 | S2216MC024 | 4.12 | 2.50 | 0.031 | 2.875 | 1.0 |
| 3 | S2214MC030 | S2216MC030 | 5.00 | 2.50 | 0.031 | 3.500 | 1.4 |
| 4 | S2214MC040 | S2216MC040 | 6.19 | 3.00 | 0.063 | 4.500 | 2.1 |
| 5 | S2214MC050 | S2216MC050 | 7.31 | 3.00 | 0.063 | 5.563 | 2.7 |
| 6 | S2214MC060 | S2216MC060 | 8.50 | 3.50 | 0.063 | 6.625 | 4.3 |

Fig. S2244MA & S2246MA - Sch 40 MSS Type A Stub End

| Size in | Part Number | | A in | B in | C (radius) in | D in | Weight lb |
|------------|-------------|------------|---------|---------|------------------|---------|--------------|
| | 304/304L | 316/316L | | | | | |
| 1/2 | S2244MA004 | S2246MA004 | 1.38 | 2.00 | 0.125 | 0.840 | 0.2 |
| 3/4 | S2244MA006 | S2246MA006 | 1.69 | 2.00 | 0.125 | 1.050 | 0.3 |
| 1 | S2244MA010 | S2246MA010 | 2.00 | 2.00 | 0.125 | 1.315 | 0.4 |
| 1-1/4 | S2244MA012 | S2246MA012 | 2.50 | 2.00 | 0.187 | 1.660 | 0.5 |
| 1-1/2 | S2244MA014 | S2246MA014 | 2.88 | 2.00 | 0.250 | 1.900 | 0.8 |
| 2 | S2244MA020 | S2246MA020 | 3.62 | 2.50 | 0.313 | 2.375 | 1.1 |
| 2-1/2 | S2244MA024 | S2246MA024 | 4.12 | 2.50 | 0.313 | 2.875 | 1.7 |
| 3 | S2244MA030 | S2246MA030 | 5.00 | 2.50 | 0.375 | 3.500 | 2.5 |
| 4 | S2244MA040 | S2246MA040 | 6.19 | 3.00 | 0.436 | 4.500 | 4.0 |
| 5 | S2244MA050 | S2246MA050 | 7.31 | 3.00 | 0.436 | 5.563 | 5.6 |
| 6 | S2244MA060 | S2246MA060 | 8.50 | 3.50 | 0.500 | 6.625 | 8.2 |



SCI ProPak™ System