


COOPLET® Weld Outlets & Adapter Nipples





COOPLET® Weld Outlets & Adapter Nipples

Weld Outlet Specifications

-  Branded COOPLET® Weld Outlets are UL Listed and FM Approved at 300 psi
- COOPLET® Weld Outlets (Threaded) conform to ASTM A-106, ASME B1.20.1
- COOPLET® Grooved Weld Outlets are made from Sch 40 Pipe, ASTM A-53 Grade A
- COOPLET® Grooved Weld Outlets size-on-size are UL Listed Only
- All Grooves are cut grooved per AWWA C606
- ProPak™ Packaging



COOPLET® Weld Outlets are UL Listed and FM Approved for use on Sch 10, Sch 40 and the following sprinkler pipe

Pipe Name	Manufacturers
Dyna- Thread®, Central- Thread®, XL®, XL-II®, Dyna-Flow®, Super 40®, Super- Flo®, TL®, Central 7®, BLT®	Allied Tube and Conduit Corp.
Eddylite®, Eddy Flow®, Eddy Thread 40°	Bull Moose Tube Co.
Gal-7°	IDOD Systems Co.
EZ-Flow®	Northwest Pipe Company
WLS®, Mega Flow®, Mega- Thread®, MLT®, GL®	Wheatland Tube Company
Steady Flow®, Steady Thread®	Welded Tube Corp.
Fire-Flo®, Ez- Thread®	Youngstown Tube Co.
Tex- Flow®	Tex- Tube International
Fire Line Flow®, Rapid Thread®, Rapid-Thread Light®	Western International Forest Products Inc.

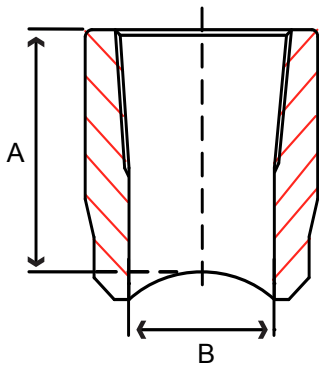
Adapter Nipple Specifications

- Sch 40 COOPLET® Adapter Nipples conform to ASTM A-53, Grade A, ASME B1.20.1, ASME B36.10, and AWWA C-606
- Sch 80 COOPLET® Adapter Nipples conform to ASTM A-106, ASME B1.20.1, ASME B36.10, and AWWA C-606
- All grooves are cut grooved per AWWA 606

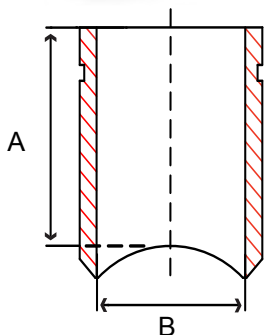


SCI ProPak™ System

Fig. 61FT1 – Threaded Weld Outlet



Size in	Pipe Run Size	Part Number	A in	B in	Packing		Weight lb
					Inner	Master	
1/2	1 to 1-1/2	61FT1004010	1.063	0.750	50	400	0.1
1/2	2 to 2-1/2	61FT1004020	1.063	0.750	50	400	0.1
1/2	3 to 8	61FT1004030	1.063	0.750	50	400	0.1
3/4	1 to 1-1/2	61FT1006010	1.125	0.875	50	300	0.2
3/4	2 to 2-1/2	61FT1006020	1.125	0.875	50	300	0.2
3/4	2-1/2	61FT1006024	1.125	0.875	50	300	0.2
3/4	3 to 8	61FT1006030	1.125	0.875	50	300	0.2
1	1-1/4 to 1-1/2	61FT1010012	1.250	1.125	50	200	0.2
1	1-1/2	61FT1010014	1.250	1.125	50	200	0.2
1	2 to 2-1/2	61FT1010020	1.250	1.125	50	200	0.2
1	2-1/2	61FT1010024	1.250	1.125	50	200	0.2
1	3 to 4	61FT1010030	1.250	1.125	50	200	0.2
1	5 to 8	61FT1010060	1.250	1.125	50	200	0.2
1-1/4	1-1/2	61FT1012014	1.375	1.500	70	140	0.3
1-1/4	2	61FT1012020	1.375	1.500	70	140	0.3
1-1/4	2-1/2	61FT1012024	1.375	1.500	70	140	0.3
1-1/4	3 to 4	61FT1012030	1.375	1.500	70	140	0.3
1-1/4	5 to 8	61FT1012060	1.375	1.500	70	140	0.3
1-1/2	2	61FT1014020	1.625	1.625	50	100	0.5
1-1/2	2-1/2	61FT1014024	1.625	1.625	50	100	0.5
1-1/2	3	61FT1014030	1.625	1.625	50	100	0.5
1-1/2	4 to 5	61FT1014040	1.625	1.625	50	100	0.5
1-1/2	6 to 8	61FT1014060	1.625	1.625	50	100	0.5
2	2-1/2	61FT1020024	1.750	2.000	25	50	0.8
2	3	61FT1020030	1.750	2.000	25	50	0.8
2	4 to 5	61FT1020040	1.750	2.000	25	50	0.8
2	6 to 8	61FT1020060	1.750	2.000	25	50	0.8
2-1/2	3	61FT1024030	2.215	2.500	15	30	1.4
2-1/2	4	61FT1024040	2.215	2.500	15	30	1.4
2-1/2	6	61FT1024060	2.215	2.500	15	30	1.4
2-1/2	8	61FT1024080	2.215	2.500	15	30	1.4
3	4	61FT1030040	2.500	3.000	8	16	2.4
3	6	61FT1030060	2.500	3.000	8	16	2.3
3	8	61FT1030080	2.500	3.000	8	16	2.3
4	6	61FT1040060	3.000	4.000	4	8	4.1
4	8	61FT1040080	3.000	4.000	4	8	4.0



All Grooves are Cut Grooved

Fig. 61CG1 – Grooved Weld Outlet (size on size)*

Size in	Pipe Run Size	Part Number	A in	B in	Packing		Weight lb
					Inner	Master	
1-1/4	1-1/4	61CG1012012	3.00	1.38	40	80	0.5
1-1/2	1-1/2	61CG1014014	3.00	1.61	25	50	0.6
2	2	61CG1020020	3.00	2.00	16	32	0.8
2-1/2	2-1/2	61CG1024024	3.00	2.50	12	24	1.3
3	3	61CG1030030	3.00	3.00	6	12	1.8
4	4	61CG1040040	4.00	4.00	4	8	3.5
6	6	61CG1060060	4.00	6.00	-	2	6.5
8	8	61CG1080080	4.00	8.00	-	2	11.6

*Size on Size Grooved Weld Outlets are UL Listed Only

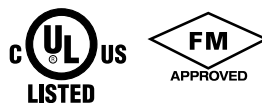
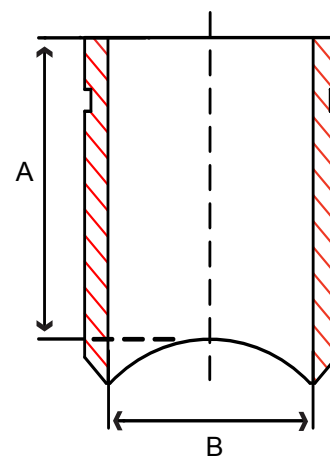


Fig. 61CG1 – Grooved Weld Outlet

Size in	Pipe Run Size	Part Number	A in	B in	Packing		Weight lb
					Inner	Master	
1-1/4	1-1/2	61CG1012014	3.00	1.38	40	80	0.5
1-1/4	2	61CG1012020	3.00	1.38	40	80	0.5
1-1/4	2-1/2	61CG1012024	3.00	1.38	40	80	0.5
1-1/4	3	61CG1012030	3.00	1.38	40	80	0.5
1-1/4	4 to 5	61CG1012040	3.00	1.38	40	80	0.5
1-1/4	6 to 8	61CG1012060	3.00	1.38	40	80	0.5
1-1/2	2	61CG1014020	3.00	1.61	25	50	0.6
1-1/2	2-1/2	61CG1014024	3.00	1.61	25	50	0.6
1-1/2	3	61CG1014030	3.00	1.61	25	50	0.6
1-1/2	4 to 5	61CG1014040	3.00	1.61	25	50	0.6
1-1/2	6 to 8	61CG1014060	3.00	1.61	25	50	0.6
2	2-1/2	61CG1020024	3.00	2.00	16	32	0.8
2	3	61CG1020030	3.00	2.00	16	32	0.8
2	4 to 5	61CG1020040	3.00	2.00	16	32	0.8
2	6	61CG1020060	3.00	2.00	16	32	0.8
2	8	61CG1020080	3.00	2.00	16	32	0.8
2-1/2	3	61CG1024030	3.00	2.50	12	24	1.3
2-1/2	4 to 5	61CG1024040	3.00	2.50	12	24	1.3
2-1/2	6	61CG1024060	3.00	2.50	12	24	1.3
2-1/2	8	61CG1024080	3.00	2.50	12	24	1.3
3	4	61CG1030040	3.00	3.00	6	12	1.8
3	6	61CG1030060	3.00	3.00	6	12	1.8
3	8	61CG1030080	3.00	3.00	6	12	1.7
4	6	61CG1040060	4.00	4.00	4	8	3.5
4	8	61CG1040080	4.00	4.00	4	8	3.4
6	8	61CG1060080	4.00	6.00	-	2	6.5



All Grooves are Cut Grooved

COOPLET®

Fig. 61GB4 – Schedule 40 Grooved x Bevel Adapter Nipple

Size in	Part Number	A in	B in	Master	Weight lb
1 x 3	61GB4010030	3.00	1.32	150	0.3
1 x 4	61GB4010040	4.00	1.32	100	0.5
1-1/4 x 4	61GB4012040	4.00	1.66	50	0.6
1-1/2 x 4	61GB4014040	4.00	1.90	50	0.7
2 x 4	61GB4020040	4.00	2.38	25	1.1
2-1/2 x 4	61GB4024040	4.00	2.88	27	1.6
3 x 4	61GB4030040	4.00	3.50	18	2.4
4 x 6	61GB4040060	6.00	4.50	8	5.1
5 x 6	61GB4050060	6.00	5.56	2	6.6
6 x 6	61GB4060060	6.00	6.63	2	8.6
8 x 6	61GB4080060	6.00	8.63	2	13.2

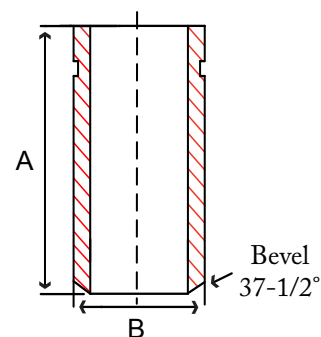


Fig. 61TG4 – Schedule 40 Threaded x Grooved Adapter Nipple



Size in	Part Number	A in	B in	TPI	Master	Weight lb
1 x 4	61TG4010040	4.00	1.32	11.5	100	0.5
1-1/4 x 4	61TG4012040	4.00	1.66	11.5	50	0.6
1-1/2 x 4	61TG4014040	4.00	1.90	11.5	50	0.7
1-1/2 x 12	61TG4014120	12.00	1.90	11.5	15	2.6
2 x 3	61TG4020030	3.00	2.38	11.5	50	0.7
2 x 4	61TG4020040	4.00	2.38	11.5	25	1.0
2 x 6	61TG4020060	6.00	2.38	11.5	25	1.7
2 x 8	61TG4020080	8.00	2.38	11.5	18	2.3
2 x 10	61TG4020100	10.00	2.38	11.5	14	2.9
2 x 12	61TG4020120	12.00	2.38	11.5	14	3.5
2-1/2 x 4	61TG4024040	4.00	2.88	8.0	27	1.6
2-1/2 x 12	61TG4024120	12.00	2.88	8.0	9	5.5
3 x 2-5/8	61TG4030025	2.62	3.50	8.0	24	1.3
3 x 3	61TG4030030	3.00	3.50	8.0	24	1.5
3 x 4	61TG4030040	4.00	3.50	8.0	18	2.1
3 x 6	61TG4030060	6.00	3.50	8.0	12	3.4
3 x 8	61TG4030080	8.00	3.50	8.0	8	4.7
3 x 10	61TG4030100	10.00	3.50	8.0	6	5.9
3 x 12	61TG4030120	12.00	3.50	8.0	6	7.2
4 x 3	61TG4040030	3.00	4.50	8.0	12	1.6
4 x 4	61TG4040040	4.00	4.50	8.0	12	2.6
4 x 6	61TG4040060	6.00	4.50	8.0	8	4.9
4 x 8	61TG4040080	8.00	4.50	8.0	5	6.7
4 x 10	61TG4040100	10.00	4.50	8.0	4	8.5
4 x 12	61TG4040120	12.00	4.50	8.0	4	10.3
5 x 6	61TG4050060	6.00	5.56	8.0	2	6.6
5 x 12	61TG4050120	12.00	5.56	8.0	1	13.9
6 x 6	61TG4060060	6.00	6.63	8.0	2	8.6
6 x 12	61TG4060120	12.00	6.63	8.0	1	18.1
8 x 6	61TG4080060	6.00	8.63	8.0	1	13.2
8 x 12	61TG4080120	12.00	8.63	8.0	1	27.5

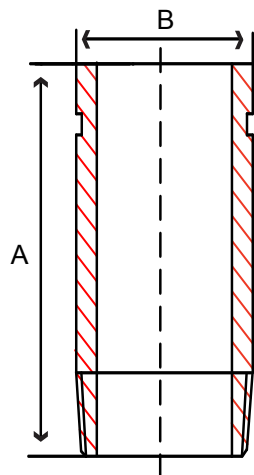


Fig. 61TG8 – Schedule 80 Threaded x Grooved Adapter Nipple

Size in	Part Number	A in	B in	TPI	Master	Weight lb
2 x 3	61TG8020030	3.00	2.38	11.5	50	1.1
2 x 4	61TG8020040	4.00	2.38	11.5	25	1.5
2 x 6	61TG8020060	6.00	2.38	11.5	25	2.3
2 x 8	61TG8020080	8.00	2.38	11.5	18	3.2
2 x 10	61TG8020100	10.00	2.38	11.5	12	4.0
2 x 12	61TG8020120	12.00	2.38	11.5	12	4.9
3 x 2-5/8	61TG8030025	2.62	3.50	8.0	24	1.9
3 x 3	61TG8030030	3.00	3.50	8.0	24	2.2
3 x 4	61TG8030040	4.00	3.50	8.0	18	3.0
3 x 6	61TG8030060	6.00	3.50	8.0	12	4.7
3 x 8	61TG8030080	8.00	3.50	8.0	8	6.5
3 x 10	61TG8030100	10.00	3.50	8.0	6	8.2
3 x 12	61TG8030120	12.00	3.50	8.0	6	9.9
4 x 3	61TG8040030	3.00	4.50	8.0	12	3.2
4 x 4	61TG8040040	4.00	4.50	8.0	12	4.5
4 x 6	61TG8040060	6.00	4.50	8.0	8	7.0
4 x 8	61TG8040080	8.00	4.50	8.0	5	9.5
4 x 10	61TG8040100	10.00	4.50	8.0	4	12.0
4 x 12	61TG8040120	12.00	4.50	8.0	4	14.5

COOPLET®

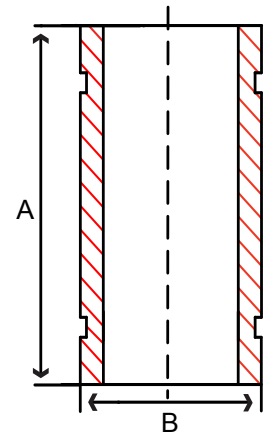
Fig. 61GG4 – Schedule 40 Grooved x Grooved Adapter Nipple

Size in	Part Number	A in	B in	Master	Weight lb
2 x 3	61GG4020030	3.00	2.38	50	0.8
2 x 4	61GG4020040	4.00	2.38	50	1.1
2 x 6	61GG4020060	6.00	2.38	25	1.7
2 x 8	61GG4020080	8.00	2.38	18	2.3
2 x 10	61GG4020100	10.00	2.38	14	2.9
2 x 12	61GG4020120	12.00	2.38	14	3.5
3 x 2-5/8	61GG4030025	2.62	3.50	24	1.5
3 x 3	61GG4030030	3.00	3.50	24	1.7
3 x 4	61GG4030040	4.00	3.50	18	2.4
3 x 6	61GG4030060	6.00	3.50	12	3.6
3 x 8	61GG4030080	8.00	3.50	8	4.9
3 x 10	61GG4030100	10.00	3.50	6	6.2
3 x 12	61GG4030120	12.00	3.50	6	7.4
4 x 3	61GG4040030	3.00	4.50	12	2.4
4 x 4	61GG4040040	4.00	4.50	12	3.3
4 x 6	61GG4040060	6.00	4.50	8	5.1
4 x 8	61GG4040080	8.00	4.50	5	6.9
4 x 10	61GG4040100	10.00	4.50	4	8.7
4 x 12	61GG4040120	12.00	4.50	4	10.3



Fig. 61GG8 – Schedule 80 Grooved x Grooved Adapter Nipple

Size in	Part Number	A in	B in	Master	Weight lb
2 x 3	61GG8020030	3.00	2.38	50	1.1
2 x 4	61GG8020040	4.00	2.38	25	1.5
2 x 6	61GG8020060	6.00	2.38	25	2.4
2 x 8	61GG8020080	8.00	2.38	18	3.2
2 x 10	61GG8020100	10.00	2.38	12	4.1
2 x 12	61GG8020120	12.00	2.38	12	4.9
3 x 2-5/8	61GG8030025	2.62	3.50	24	2.1
3 x 3	61GG8030030	3.00	3.50	24	2.4
3 x 4	61GG8030040	4.00	3.50	18	3.3
3 x 6	61GG8030060	6.00	3.50	12	5.0
3 x 8	61GG8030080	8.00	3.50	8	6.7
3 x 10	61GG8030100	10.00	3.50	6	8.4
3 x 12	61GG8030120	12.00	3.50	6	10.1
4 x 3	61GG8040030	3.00	4.50	12	3.4
4 x 4	61GG8040040	4.00	4.50	12	4.7
4 x 6	61GG8040060	6.00	4.50	8	7.2
4 x 8	61GG8040080	8.00	4.50	5	9.7
4 x 10	61GG8040100	10.00	4.50	4	12.2
4 x 12	61GG8040120	12.00	4.50	4	14.7



COOPLET®