

Stainless Steel Bar Stock Fittings





Bar Stock Fittings

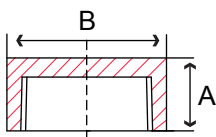
Specifications

- Stainless bar stock dimensions conform to MSS SP-114
- Stainless bar stock conforms to ASTM A276 Grade T304 & T316
- NPT threads conform to ASME B1.20.1
- Manufacturing facility is ISO 9001:2008 certified
- Fittings meet applicable chemical & mechanical properties



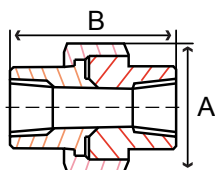
SCI ProPak™ System

Fig. S3414C & S3416C - Cap



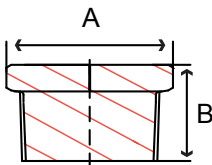
Size in	Part Number		A in	B in	Weight lb
	304	316			
1/8	S3414C 001B	S3416C 001B	0.68	0.62	0.05
1/4	S3414C 002B	S3416C 002B	0.68	0.74	0.07
3/8	S3414C 003B	S3416C 003B	0.80	0.86	0.09
1/2	S3414C 004B	S3416C 004B	0.93	1.05	0.1
3/4	S3414C 006B	S3416C 006B	1.05	1.29	0.4
1	S3414C 010B	S3416C 010B	1.35	1.60	0.5
1-1/4	S3414C 012B	S3416C 012B	1.60	1.95	0.6
1-1/2	S3414C 014B	S3416C 014B	1.60	2.15	0.6
2	S3414C 020B	S3416C 020B	1.74	2.71	1.2
2-1/2	S3414C 024B	S3416C 024B	2.34	3.32	3.5
3	S3414C 030B	S3416C 030B	2.54	4.10	6.2
4	S3414C 040B	S3416C 040B	2.65	5.07	9.2

Fig. S3414U & S3416U - Union



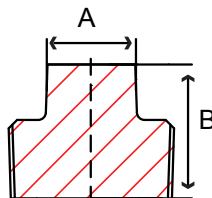
Size in	Part Number		A in	B in	Weight lb
	304	316			
1/8	S3414U 001B	S3416U 001B	1.17	1.48	0.2
1/4	S3414U 002B	S3416U 002B	1.17	1.48	0.2
3/8	S3414U 003B	S3416U 003B	1.37	1.60	0.3
1/2	S3414U 004B	S3416U 004B	1.48	1.91	0.4
3/4	S3414U 006B	S3416U 006B	1.79	1.92	0.6
1	S3414U 010B	S3416U 010B	2.11	2.34	0.9
1-1/4	S3414U 012B	S3416U 012B	2.48	2.59	1.3
1-1/2	S3414U 014B	S3416U 014B	2.96	2.96	2.2
2	S3414U 020B	S3416U 020B	3.59	3.04	2.9
2-1/2	S3414U 024B	S3416U 024B	4.46	3.71	5.1
3	S3414U 030B	S3416U 030B	5.32	4.06	8.4
4	S3414U 040B	S3416U 040B	6.67	4.37	11.8

Fig. S3414HP & S3416HP - Hex Head Plug



Size in	Part Number		A in	B in	Weight lb
	304	316			
1/8	S3414HP001B	S3416HP001B	0.50	0.62	0.02
1/4	S3414HP002B	S3416HP002B	0.56	0.74	0.07
3/8	S3414HP003B	S3416HP003B	0.66	0.87	0.1
1/2	S3414HP004B	S3416HP004B	0.75	0.92	0.1
3/4	S3414HP006B	S3416HP006B	0.84	1.05	0.2
1	S3414HP010B	S3416HP010B	1.00	1.13	0.4
1-1/4	S3414HP012B	S3416HP012B	1.09	1.37	0.9
1-1/2	S3414HP014B	S3416HP014B	1.13	1.44	1.2
2	S3414HP020B	S3416HP020B	1.22	1.70	2.2
2-1/2	S3414HP024B	S3416HP024B	1.49	1.79	2.7
3	S3414HP030B	S3416HP030B	1.53	1.93	5.6
4	S3414HP040B	S3416HP040B	1.75	2.22	10.1

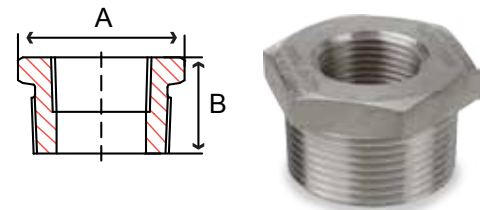
Fig. S3414SP & S3416SP - Square Head Plug



Size in	Part Number		A in	B in	Weight lb
	304	316			
1/8	S3414SP001B	S3416SP001B	0.62	0.27	0.02
1/4	S3414SP002B	S3416SP002B	0.70	0.39	0.04
3/8	S3414SP003B	S3416SP003B	0.84	0.47	0.07
1/2	S3414SP004B	S3416SP004B	0.98	0.55	0.1
3/4	S3414SP006B	S3416SP006B	1.05	0.66	0.2
1	S3414SP010B	S3416SP010B	1.25	0.82	0.3
1-1/4	S3414SP012B	S3416SP012B	1.37	0.94	0.5
1-1/2	S3414SP014B	S3416SP014B	1.44	1.12	0.7
2	S3414SP020B	S3416SP020B	1.56	1.30	1.1
2-1/2	S3414SP024B	S3416SP024B	1.79	1.48	2.5
3	S3414SP030B	S3416SP030B	1.91	1.68	3.9
4	S3414SP040B	S3416SP040B	2.22	2.48	7.2

Fig. S3414HB & S3416HB - Hex Bushing

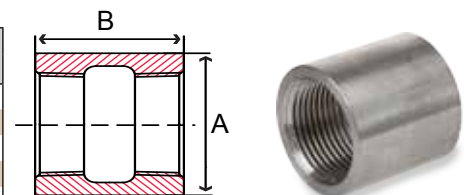
Size in	Part Number		A in	B in	Weight lb
	304	316			
1/4 x 1/8	S3414HB002001B	S3416HB002001B	0.62	0.65	0.07
3/8 x 1/8	S3414HB003001B	S3416HB003001B	0.68	0.74	0.07
3/8 x 1/4	S3414HB003002B	S3416HB003002B	0.68	0.74	0.04
1/2 x 1/8	S3414HB004001B	S3416HB004001B	0.86	0.81	0.1
1/2 x 1/4	S3414HB004002B	S3416HB004002B	0.86	0.81	0.09
1/2 x 3/8	S3414HB004003B	S3416HB004003B	0.86	0.81	0.07
3/4 x 1/8	S3414HB006001B	S3416HB006001B	1.05	0.97	0.2
3/4 x 1/4	S3414HB006002B	S3416HB006002B	1.05	0.97	0.1
3/4 x 3/8	S3414HB006003B	S3416HB006003B	1.05	0.97	0.1
3/4 x 1/2	S3414HB006004B	S3416HB006004B	1.05	0.97	0.1
1 x 1/8	S3414HB010001B	S3416HB010001B	1.37	1.05	0.3
1 x 1/4	S3414HB010002B	S3416HB010002B	1.37	1.05	0.3
1 x 3/8	S3414HB010003B	S3416HB010003B	1.37	1.05	0.3
1 x 1/2	S3414HB010004B	S3416HB010004B	1.37	1.05	0.2
1 x 3/4	S3414HB010006B	S3416HB010006B	1.37	1.05	0.1
1-1/4 x 1/8	S3414HB012001B	S3416HB012001B	1.72	1.15	0.6
1-1/4 x 1/4	S3414HB012002B	S3416HB012002B	1.72	1.15	0.6
1-1/4 x 3/8	S3414HB012003B	S3416HB012003B	1.72	1.15	0.6
1-1/4 x 1/2	S3414HB012004B	S3416HB012004B	1.72	1.15	0.6
1-1/4 x 3/4	S3414HB012006B	S3416HB012006B	1.72	1.15	0.4
1-1/4 x 1	S3414HB012010B	S3416HB012010B	1.72	1.15	0.3
1-1/2x1/8	S3414HB014001B	S3416HB014001B	1.95	1.21	0.9
1-1/2x1/4	S3414HB014002B	S3416HB014002B	1.95	1.21	0.9
1-1/2x3/8	S3414HB014003B	S3416HB014003B	1.95	1.21	0.9
1-1/2x1/2	S3414HB014004B	S3416HB014004B	1.95	1.21	0.8
1-1/2x3/4	S3414HB014006B	S3416HB014006B	1.95	1.21	0.7
1-1/2x1	S3414HB014010B	S3416HB014010B	1.95	1.21	0.6
1-1/2x1-1/4	S3414HB014012B	S3416HB014012B	1.95	1.21	0.3
2x1/4	S3414HB020002B	S3416HB020002B	2.46	1.37	1.7
2x3/8	S3414HB020003B	S3416HB020003B	2.46	1.37	1.6
2x1/2	S3414HB020004B	S3416HB020004B	2.46	1.37	1.6
2x3/4	S3414HB020006B	S3416HB020006B	2.46	1.37	1.5
2x1	S3414HB020010B	S3416HB020010B	2.46	1.37	1.3
2x1-1/4	S3414HB020012B	S3416HB020012B	2.46	1.37	1.0
2x1-1/2	S3414HB020014B	S3416HB020014B	2.46	1.37	0.8
2-1/2x1/2	S3414HB024004B	S3416HB024004B	2.93	1.44	2.4
2-1/2x3/4	S3414HB024006B	S3416HB024006B	2.93	1.44	2.4
2-1/2x1	S3414HB024010B	S3416HB024010B	2.93	1.44	2.2
2-1/2x1-1/4	S3414HB024012B	S3416HB024012B	2.93	1.44	2.4
2-1/2x1-1/2	S3414HB024012B	S3416HB024012B	2.93	1.44	1.6
2-1/2x2	S3414HB024020B	S3416HB024020B	2.93	1.44	0.9
3x1	S3414HB030010B	S3416HB030010B	3.47	1.48	3.7
3x1-1/4	S3414HB030012B	S3416HB030012B	3.47	1.48	4.9
3x1-1/2	S3414HB030014B	S3416HB030014B	3.47	1.48	2.5
3x2	S3414HB030020B	S3416HB030020B	3.47	1.48	2.3
3x2-1/2	S3414HB030024B	S3416HB030024B	3.47	1.48	1.6
4x1	S3414HB040010B	S3416HB040010B	4.58	1.76	10.5
4x1-1/4	S3414HB040012B	S3416HB040012B	4.58	1.76	10.2
4x1-1/2	S3414HB040014B	S3416HB040014B	4.58	1.76	6.9
4x2	S3414HB040020B	S3416HB040020B	4.58	1.76	6.1
4x2-1/2	S3414HB040024B	S3416HB040024B	4.58	1.76	5.2
4x3	S3414HB040030B	S3416HB040030B	4.58	1.76	3.7



B
A
R
S
T
O
C
K

Fig. S3414CP & S3416CP - Full Coupling

Size in	Part Number		A in	B in	Weight lb
	304	316			
1/8	S3414CP001B	S3416CP001B	0.62	1.00	0.07
1/4	S3414CP002B	S3416CP002B	0.74	1.00	0.09
3/8	S3414CP003B	S3416CP003B	0.86	1.12	0.1
1/2	S3414CP004B	S3416CP004B	1.05	1.38	0.2
3/4	S3414CP006B	S3416CP006B	1.29	1.50	0.2
1	S3414CP010B	S3416CP010B	1.62	1.62	0.4
1-1/4	S3414CP012B	S3416CP012B	1.87	2.00	0.5
1-1/2	S3414CP014B	S3416CP014B	2.16	2.12	0.7
2	S3414CP020B	S3416CP020B	2.71	2.50	1.4
2-1/2	S3414CP024B	S3416CP024B	3.38	2.86	2.6
3	S3414CP030B	S3416CP030B	3.96	3.17	3.8
4	S3414CP040B	S3416CP040B	5.05	3.68	6.8



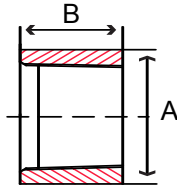


Fig. S3414HC & S3416HC - Half Coupling

Size in	Part Number		A in	B in	Weight lb
	304	316			
1/8	S3414HC001B	S3416HC001B	0.62	0.50	0.03
1/4	S3414HC002B	S3416HC002B	0.74	0.56	0.04
3/8	S3414HC003B	S3416HC003B	0.86	0.56	0.07
1/2	S3414HC004B	S3416HC004B	1.05	0.70	0.1
3/4	S3414HC006B	S3416HC006B	1.29	0.74	0.1
1	S3414HC010B	S3416HC010B	1.62	0.80	0.2
1-1/4	S3414HC012B	S3416HC012B	1.87	0.99	0.2
1-1/2	S3414HC014B	S3416HC014B	2.16	1.05	0.3
2	S3414HC020B	S3416HC020B	2.71	1.25	0.7
2-1/2	S3414HC024B	S3416HC024B	3.38	1.42	1.3
3	S3414HC030B	S3416HC030B	3.96	1.58	1.8
4	S3414HC040B	S3416HC040B	5.05	1.83	3.1

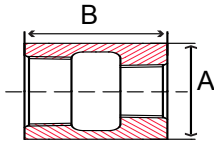
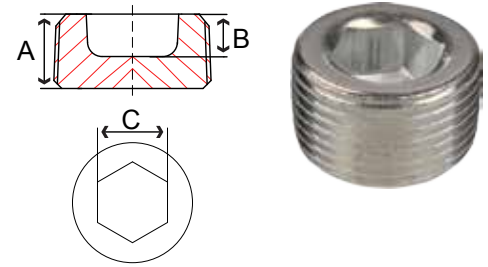


Fig. S3414RC & S3416RC - Reducing Coupling

Size in	Part Number		A in	B in	Weight lb
	304	316			
1/4 x 1/8	S3414RC002001B	S3416RC002001B	0.74	1.12	0.1
3/8 x 1/8	S3414RC003001B	S3416RC003001B	0.86	1.17	0.1
3/8 x 1/4	S3414RC003002B	S3416RC003002B	0.86	1.17	0.1
1/2 x 1/8	S3414RC004001B	S3416RC004001B	1.05	1.49	0.2
1/2 x 1/4	S3414RC004002B	S3416RC004002B	1.05	1.49	0.2
1/2 x 3/8	S3414RC004003B	S3416RC004003B	1.05	1.49	0.2
3/4 x 1/8	S3414RC006001B	S3416RC006001B	1.29	1.55	0.7
3/4 x 1/4	S3414RC006002B	S3416RC006002B	1.29	1.55	0.3
3/4 x 3/8	S3414RC006003B	S3416RC006003B	1.29	1.55	0.3
3/4 x 1/2	S3414RC006004B	S3416RC006004B	1.29	1.55	0.3
1 x 1/8	S3414RC010001B	S3416RC010001B	1.64	1.72	0.8
1 x 1/4	S3414RC010002B	S3416RC010002B	1.64	1.72	0.6
1 x 3/8	S3414RC010003B	S3416RC010003B	1.64	1.72	0.6
1 x 1/2	S3414RC010004B	S3416RC010004B	1.64	1.72	0.5
1 x 3/4	S3414RC010006B	S3416RC010006B	1.64	1.72	0.5
1-1/4 x 1/8	S3414RC012001B	S3416RC012001B	1.95	1.98	1.1
1-1/4 x 1/4	S3414RC012002B	S3416RC012002B	1.95	1.98	1.1
1-1/4 x 3/8	S3414RC012003B	S3416RC012003B	1.95	1.98	1.1
1-1/4 x 1/2	S3414RC012004B	S3416RC012004B	1.95	1.98	1.0
1-1/4 x 3/4	S3414RC012006B	S3416RC012006B	1.95	1.98	0.9
1-1/4 x 1	S3414RC012010B	S3416RC012010B	1.95	1.98	0.9
1-1/2 x 1/8	S3414RC014001B	S3416RC014001B	2.15	2.10	1.3
1-1/2 x 1/4	S3414RC014002B	S3416RC014002B	2.15	2.10	1.4
1-1/2 x 3/8	S3414RC014003B	S3416RC014003B	2.15	2.10	1.2
1-1/2 x 1/2	S3414RC014004B	S3416RC014004B	2.15	2.10	1.2
1-1/2 x 3/4	S3414RC014006B	S3416RC014006B	2.15	2.10	1.1
1-1/2 x 1	S3414RC014010B	S3416RC014010B	2.15	2.10	1.0
1-1/2 x 1-1/4	S3414RC014012B	S3416RC014012B	2.15	2.10	0.8
2 x 3/8	S3414RC020003B	S3416RC020003B	2.71	2.48	2.6
2 x 1/2	S3414RC020004B	S3416RC020004B	2.71	2.48	2.5
2 x 3/4	S3414RC020006B	S3416RC020006B	2.71	2.48	2.4
2 x 1	S3414RC020010B	S3416RC020010B	2.71	2.48	2.3
2 x 1-1/4	S3414RC020012B	S3416RC020012B	2.71	2.48	2.0
2 x 1-1/2	S3414RC020014B	S3416RC020014B	2.71	2.48	1.8
2-1/2 x 1-1/2	S3414RC024014B	S3416RC024014B	3.32	3.24	5.1
2-1/2 x 2	S3414RC024020B	S3416RC024020B	3.32	3.24	3.5
3 x 1	S3414RC030010B	S3416RC030010B	4.10	3.63	8.8
3 x 1-1/2	S3414RC030014B	S3416RC030014B	4.10	3.63	7.9
3 x 2	S3414RC030020B	S3416RC030020B	4.10	3.63	7.5
3 x 2-1/2	S3414RC030024B	S3416RC030024B	4.10	3.63	6.5
4 x 2	S3414RC040020B	S3416RC040020B	5.07	4.33	14.5
4 x 3	S3414RC040030B	S3416RC040030B	5.07	4.33	15.6

Fig. S3514CH & S3516CH - Short Counter Sunk Hex Plug

Size in	Part Number		A in	B in	C in	Weight lb
	302 / 304*	316				
1/16	S3514CH000	S3516CH000	0.25	0.09	0.15	0.006
1/8	S3514CH001	S3516CH001	0.26	0.09	0.18	0.01
1/4	S3514CH002	S3516CH002	0.39	0.16	0.25	0.02
3/8	S3514CH003	S3516CH003	0.39	0.16	0.31	0.03
1/2	S3514CH004	S3516CH004	0.52	0.19	0.37	0.06
3/4	S3514CH006	S3516CH006	0.53	0.19	0.56	0.08
1	S3514CH010	S3516CH010	0.67	0.25	0.62	0.2
1-1/4	S3514CH012	S3516CH012	0.69	0.37	0.75	0.3
1-1/2	S3514CH014	S3516CH014	0.80	0.37	1.00	0.4
2	S3514CH020	S3516CH020	0.87	0.37	1.00	0.9



* 1/16 to 3/4 are 302 Stainless Steel 1 - 2 are 304 Stainless Steel



ProPak™ System

B
A
R
S
T
O
C
K



**Order On-Line
at www.smithcooper.com**