



Valves, Automation & Controls

Series 25614  
600# FLANGED CAST STEEL  
CHECK VALVE

**Design Features**

- Bolted Cover
- Swing Type
- Integral Seat

**Applicable Standards**

- Steel valves           ANSI B16.34
- Face to face         ANSI B16.10
- End flanges         ANSI B16.5
- Butt-weld ends     ANSI B16.25
- Inspection and test API 598
- NACE                 MR-0175



USA 800-766-0076

Fax 323-890-4456

[www.smithcooper.com](http://www.smithcooper.com)

[www.sharpevalves.com](http://www.sharpevalves.com)

Los Angeles, CA

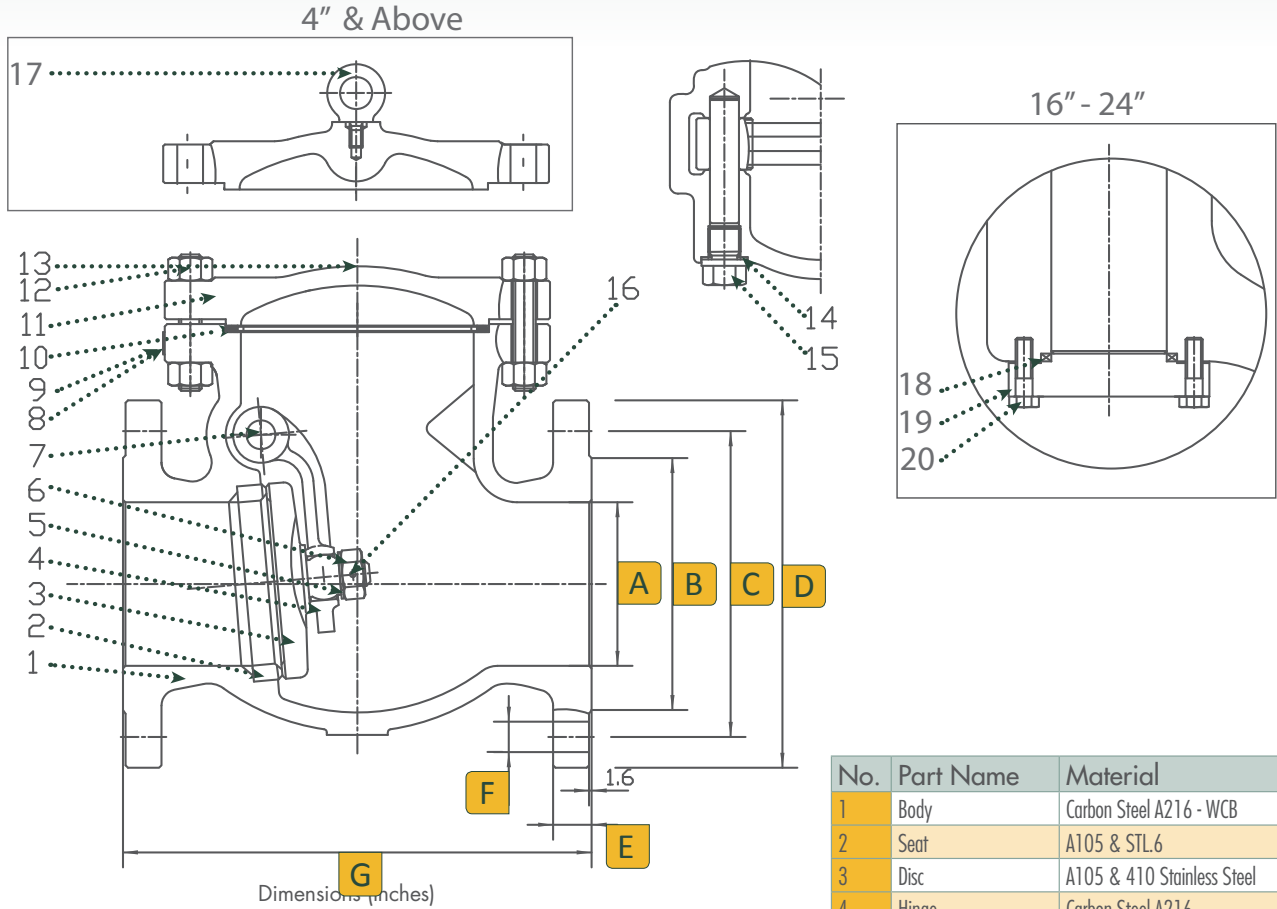
Chicago, IL

Atlanta, GA

Vancouver, WA

Houston, TX

## Dimensions, Parts & Materials



Size	A	B	C	D	E	F	G	Num of Bolt Holes
2	2.00	3.62	5.00	6.50	1.00	0.75	11.50	8
2-1/2	2.50	4.12	5.88	7.50	1.12	0.875	13.00	8
3	3.00	5.00	6.62	8.25	1.25	0.875	14.00	8
4	4.00	6.19	8.50	10.75	1.50	1.00	17.00	8
6	6.00	8.50	11.50	14.00	1.88	1.125	22.00	12
8	8.00	10.62	13.75	16.50	2.19	1.25	26.00	12
10	9.76	12.75	17.00	20.00	2.50	1.375	31.00	16
12	11.73	15.00	19.25	22.00	2.62	1.375	33.00	20
14	13.35	16.25	20.75	23.75	2.75	1.50	35.00	20
16	14.76	18.50	23.75	27.00	3.00	1.625	39.00	20
18	16.50	21.00	25.75	29.25	3.25	1.75	43.00	20
20	18.27	23.00	28.50	32.00	3.50	1.75	47.00	24
24	22.00	27.25	33.00	37.00	4.00	2.00	55.00	24

No.	Part Name	Material
1	Body	Carbon Steel A216 - WCB
2	Seat	A105 & STL.6
3	Disc	A105 & 410 Stainless Steel
4	Hinge	Carbon Steel A216
5	Gasket	A276 410
6	Nut	A276 410
7	Pin	A276 410
8	Rivlet	304 Stainless Steel
9	Name Plate	304 Stainless Steel
10	Gasket	F304 & Flexible Graphite
11	Cover	Carbon Steel A216 - WCB
12	Bolt	B7 Steel A193
13	Nut	2H Steel A194
14	Gasket	Soft Iron
15	Plug	410 Stainless Steel
16	Pin	304 Stainless Steel
17	Eyebolt	Carbon Steel
18	Gasket	F304 & Flexible Graphite
19	Bolt	Carbon Steel
20	Gland	Carbon Steel

