

SMITH-COOPER

INTERNATIONAL

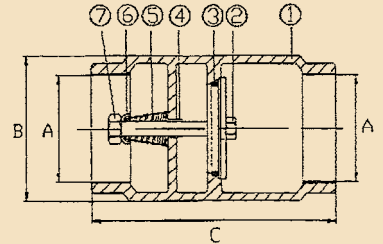
PLUMBING ACCESSORIES

209 CV Series

IN-LINE CHECK VALVES

- 200 PSI Working Pressure WOG. – Brass
- Shell Tested as 80 PSI Air – Brass
- Seat Tested at 80 PSI Air – Brass
- Cast Brass
- Type 304 Stainless Steel Components – Brass
- Threads Comply to ANSI B1.20.1 (NPT) – Brass
- EPDM Seat and Seal – PVC
- Union Design – PVC
- 2 PSI Spring

| No. | Part | Materials Specification |
|-----|---------|-------------------------|
| ① | Body | Brass ASTM C85700 |
| ② | Stopper | Brass ASTM C85700 |
| ③ | O-Ring | Rubber, NBR, Buna -N |
| ④ | Washer | PE |
| ⑤ | Spring | Stainless Steel 304 |
| ⑥ | Cap | Stainless Steel 304 |
| ⑦ | Nut | Stainless Steel 304 |

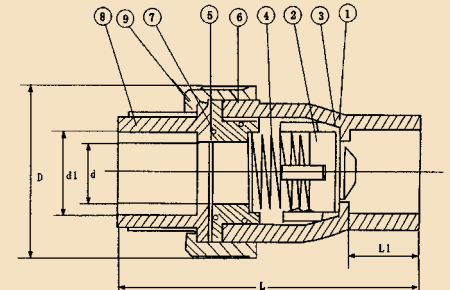


209 CV30 SERIES BRASS IN-LINE CHECK VALVE

| Size | Fig. # | Weight | Box/Case | A(NPT) | B | C |
|--------|-----------|--------|----------|--------|------|------|
| 1/2" | 209 CV30G | 0.43 | 10/100 | 1/2" | 1.26 | 2.43 |
| 3/4" | 209 CV30I | 0.58 | 10/80 | 3/4" | 1.50 | 2.72 |
| 1" | 209 CV30K | 0.81 | 10/60 | 1" | 1.77 | 3.23 |
| 1-1/4" | 209 CV30L | 1.27 | 5/40 | 1-1/4" | 2.13 | 3.62 |
| 1-1/2" | 209 CV30M | 1.47 | 5/30 | 1-1/2" | 2.36 | 4.05 |
| 2" | 209 CV30N | 2.53 | 5/20 | 2" | 3.03 | 5.04 |

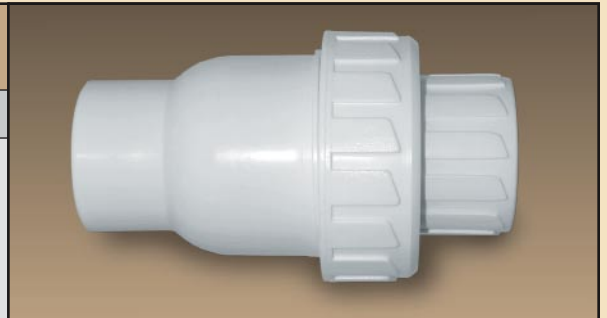


| No. | Part | Materials Specification |
|-----|-----------------|-------------------------|
| ① | Body | PVC |
| ② | Gate | PVC |
| ③ | Valve Seat | EPDM |
| ④ | Spring | SU316 |
| ⑤ | Thread Spacer | PVC |
| ⑥ | Spacer Seal | EPDM |
| ⑦ | End Seal | EPDM |
| ⑧ | Union Connector | PVC |
| ⑨ | Union Nut | PVC |



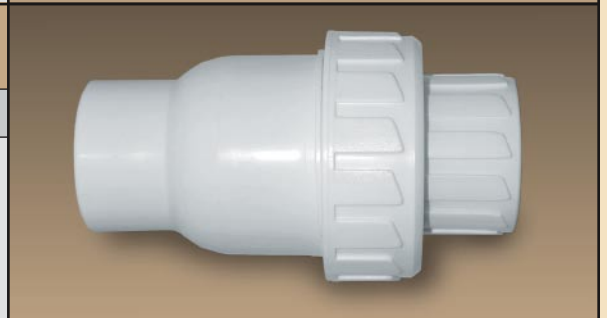
209 CV40 SERIES PVC IN-LINE CHECK VALVE THREADED

| Size | Fig. # | Weight | Box/Case | D | d | d1 | L | L1 |
|--------|-----------|--------|----------|------|------|------|------|------|
| 1/2" | 209 CV40G | 0.43 | 12/144 | 2.13 | 0.59 | 0.84 | 3.70 | 0.69 |
| 3/4" | 209 CV40I | 0.58 | 6/72 | 2.44 | 0.79 | 1.05 | 4.14 | 0.99 |
| 1" | 209 CV40K | 0.81 | 6/60 | 2.75 | 0.95 | 1.32 | 4.74 | 1.18 |
| 1-1/4" | 209 CV40L | 1.27 | 4/48 | 3.26 | 1.18 | 1.66 | 5.37 | 1.18 |
| 1-1/2" | 209 CV40M | 1.47 | 4/40 | 3.70 | 1.34 | 1.90 | 5.89 | 1.36 |
| 2" | 209 CV40N | 2.53 | 2/24 | 4.51 | 1.77 | 2.38 | 7.03 | 1.73 |



209 CV50 SERIES PVC IN-LINE CHECK VALVE SOCKET END

| Size | Fig. # | Weight | Box/Case | D | d | d1 | L | L1 |
|--------|-----------|--------|----------|------|------|------|------|------|
| 1/2" | 209 CV50G | 0.43 | 12/144 | 2.13 | 0.59 | 0.84 | 3.70 | 0.69 |
| 3/4" | 209 CV50I | 0.58 | 6/72 | 2.44 | 0.79 | 1.05 | 4.14 | 0.99 |
| 1" | 209 CV50K | 0.81 | 6/60 | 2.75 | 0.95 | 1.32 | 4.74 | 1.18 |
| 1-1/4" | 209 CV50L | 1.27 | 4/48 | 3.26 | 1.18 | 1.66 | 5.37 | 1.18 |
| 1-1/2" | 209 CV50M | 1.47 | 4/40 | 3.70 | 1.34 | 1.90 | 5.89 | 1.36 |
| 2" | 209 CV50N | 2.53 | 2/24 | 4.51 | 1.77 | 2.38 | 7.03 | 1.73 |



Operating Temperature (F) 100 110 120 130 140 150
PVC Valve Pressure rating (PSI) 235 211 150 75 50

* Threaded Valves should not be used at temperatures above 110 F.