

BUTTERFLY VALVES

LUG OR WAFER – LEVER OR GEAR ACTUATION

- Cast Iron Body
- Stainless Steel Stem
- Disc: Ductile Iron-Nickel Plated, Aluminum Bronze, Stainless Steel
- EPDM or Buna N Phenolic Backed Cartridge Seat
- 24", 36", 48", 60", 72" Extensions Available
- Fusion Bonded Epoxy Coating
- MSS SP-67/API 609
- 200 PSI 2"-12" / 150 PSI 14"-16" @ 150°F/65°C
- ISO 9001 Factory
- Install Between ANSI Class 125/150 Flange
- Top Flange: 150 5211



*Not designed for dead-end service or steam

HOW TO ORDER

Use Part Number to specify style and size.
EXAMPLE:

LANL 060

Bold NUMBERS in top row under valve sizes (020, 025, 030, etc.)

Bold LETTERS in vertical column under "Part No."

Actuation: L = Lever G = Gear
Liner Material: N = BunaN (NBR)
E = EPDM
Disc Material: A = Aluminum/Bronze
D = Ductile Iron
S = Stainless Steel 316
Body Style: L = Lug W = Wafer

Extension Kits

0160XT	020	240
Part No.	Dimension	Length

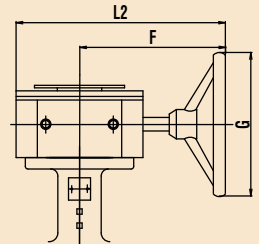
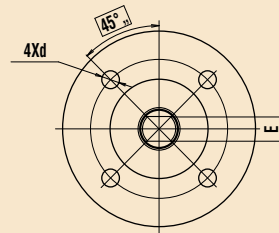
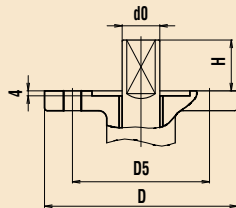
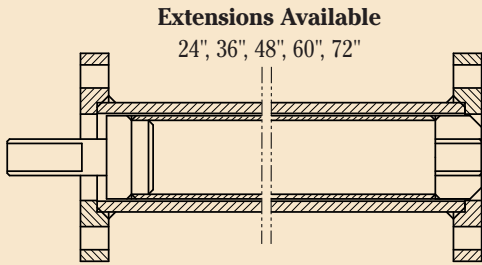
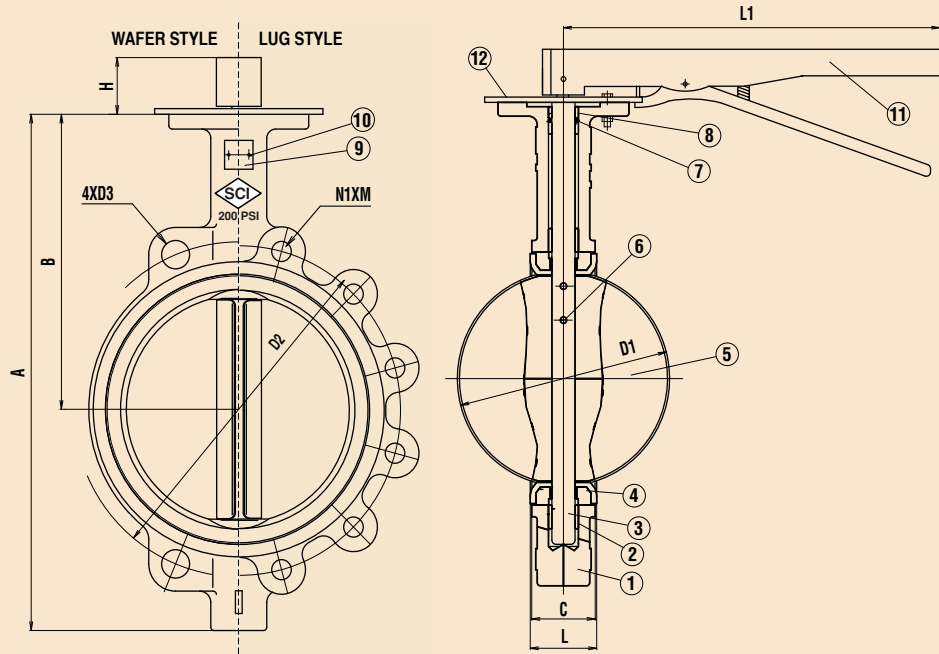
160 SERIES TORQUE DATA (IN LBS.)					
Size	75 PSI	100 PSI	150 PSI	200 PSI	Notes
2"	135	140	160	170	Torque values are for clean water or lubricating fluids at ambient temperature.
2.5"	145	150	170	190	
3"	225	230	240	260	
4"	370	390	410	450	
5"	570	600	650	690	
6"	890	940	1,040	1,100	The torque value is the highest required to operate the valve from the closed to full open position.
8"	1,600	1,700	1,900	2,100	
10"	2,560	2,760	3,160	3,500	Values are based on performance tests and include a how much % safety factor.
12"	3,800	4,100	4,750	5,400	
14"	4,800	5,150	6,000	-	
16"	6,250	7,000	8,300	-	

BUTTERFLY VALVES

LUG OR WAFER – LEVER OR GEAR ACTUATION

- Cast Iron Body
- Stainless Steel Stem
- Disc: Ductile Iron-Nickel Plated, Aluminum Bronze, Stainless Steel
- EPDM or Buna N Phenolic Backed Cartridge Seat
- 24", 36", 48", 60", 72" Extensions Available
- Fusion Bonded Epoxy Coating
- MSS SP-67/API 609
- 200 PSI 2"-12" / 150 PSI 14"-16" @ 150°F/65°C
- ISO 9001 Factory
- Install Between ANSI Class 125/150 Flange
- Top Flange: 150 5211

No.	Part	Materials Specification
①	Body	Cast Iron ASTM A126
②	Bushing	PTFE
③	Stem	ASTM A582 SS416 ASTM A276 SS316 w/SS316 disc
④	Liner	BUNA-N EPDM
⑤	Disc	Aluminum Bronze ASTM C954 Ductile Iron-NP ASTM A536 SS316/CF8M ASTM A276
⑥	Taper Pin	SS316 ASTM A276
⑦	O-Ring	BUNA-N EPDM
⑧	Bushing	PTFE
⑨	Plate Rivet	Aluminum
⑩	Name Plate	Aluminum
⑪	Handle	Malleable Iron
⑫	Throttle Plate	Steel



*Not designed for dead-end service or steam

160 SERIES BUTTERFLY VALVES

Size	Dimensions																	Wafer Lbs.		Lug Lbs.		
	A	B	C	L	D1	D2	D3	D	D5	d0	d	E	H	L1	L2	F	G	N1XM	Lever	Gear	Lever	Gear
2"	9.5	6.3	1.7	1.8	2.1	4.75	0.75	2.6	1.97	0.50	0.28	0.40	1.3	10.5	7.9	5.8	5.9	4 x 5/8" - 11UNC	6.6	18.7	11.5	22.7
2 1/2"	10.4	6.9	1.8	1.9	2.5	5.50	0.75	2.6	1.97	0.50	0.28	0.40	1.3	10.5	7.9	5.8	5.9	4 x 5/8" - 11UNC	8.2	20.3	12.3	23.6
3"	10.9	7.1	1.8	1.9	3.1	6.00	0.75	2.6	1.97	0.50	0.28	0.40	1.3	10.5	7.9	5.8	5.9	4 x 5/8" - 11UNC	9.0	21.2	12.8	24.0
4"	12.4	7.9	2.1	2.2	4.1	7.50	0.75	3.5	2.76	0.62	0.39	0.47	1.3	10.5	7.9	5.8	5.9	8 x 5/8" - 11UNC	11.9	24.0	22.0	33.3
5"	13.4	8.4	2.1	2.3	4.9	8.50	0.88	3.5	2.76	0.74	0.39	0.55	1.3	10.5	7.9	5.8	5.9	8 x 3/4" - 10UNC	17.2	28.7	28.7	39.9
6"	14.4	8.9	2.2	2.3	6.1	9.50	0.88	3.5	2.76	0.74	0.39	0.55	1.3	10.5	7.9	5.8	5.9	8 x 3/4" - 10UNC	19.0	30.4	31.1	42.3
8"	17.1	10.2	2.4	2.5	8.0	11.75	0.88	4.9	4.02	0.87	0.47	0.66	1.6	14.1	12.4	9.4	11.8	8 x 3/4" - 10UNC	32.0	47.8	48.1	61.7
10"	19.5	11.5	2.6	2.8	9.9	14.25	1.00	4.9	4.02	1.12	0.47	0.86	1.6	14.1	12.4	9.4	11.8	12 x 7/8" - 9UNC	48.5	60.6	70.1	83.8
12"	22.8	13.3	3.0	3.2	11.9	17.00	1.00	4.9	4.02	1.24	0.47	0.86	1.6	14.1	12.2	8.9	11.8	12 x 7/8" - 9UNC	80.5	112.0	113.0	147.7
14"	25.0	14.5	3.0	3.1	13.1	18.75	1.12	4.9	4.02	1.24	0.47	0.94	1.8	n/a	12.2	8.9	11.8	12 x 1" - 8UNC	n/a	134.0	n/a	199.0
16"	27.9	15.7	3.4	3.5	15.3	21.25	1.12	6.9	5.51	1.31	0.71	1.10	2.0	n/a	15.7	10.6	11.8	12 x 1" - 8UNC	n/a	181.0	n/a	265.0