



Standardized Boxes



- IMPROVES RECEIVING AND DISTRIBUTION
- STANDARDIZED CARTON SIZES
- PICTURE OF PRODUCT ON EACH LABEL
- BAR CODE ON EACH LABEL
- INNER BOXES LABELED
- STANDARDIZED BOX QUANTITIES

Markings on Fittings

MARKINGS ON EVERY FITTING

- SCI LOGO
- 3A LOGO
- HEAT NUMBER
- COUNTRY OF ORIGIN



SMITH-COOPER[®]

INTERNATIONAL

Sanitary Products

Table of Contents

Sanitary Clamp End Fittings	1-3	N66 Ball Valve	7
Sanitary Weld Fittings	3-4	Series 66 Ball Valve	8
Tube Hangers	5	Series D88 Diverter Ball Valve.....	9
Stainless Steel Tube Size Plate Flange	5	Series 77 3-Way or 4-Way Ball Valve	10
Stainless Steel Sanitary Tubing	5	Series 66 Tank Bottom Valve	11
Sanitary Butterfly Valve	6	Automation	12

Specifications

- Sanitary Fittings and Tubing are 3-A approved
- Stainless Steel tubing dimensions and materials conform to ASTM A269 / A270 and 3-A approved
- Stainless Steel Plate Flanges made from ASTM A240 (Plate) or cast in conformance with ASTM A351
- Material Test Reports available
- Manufacturing Facility are ISO 9001-2000

SCI Quality Plus

- Quality control inspections both at the overseas factory and our US warehouses
- Company engineer available at your request
- \$10,000,000 product liability insurance
- SCI 5/50 guarantee
- Pro Pak System makes products easier to handle and warehouse
- Orders shipped with in 24 hours
- Fax confirmation of every order
- Knowledgeable customer service personnel

Warranty and Limitations of Liability

SMITH-COOPER INTERNATIONAL (SCI) warrants to its initial purchaser only, that its products which are delivered to this initial purchaser will be of the kind described in the order or price list and will be free of defects in workmanship or material for a period of five years from the date of delivery to our initial purchaser.

Should any failure to conform to this warranty appear within five years after the date of the initial delivery to our initial purchaser, SCI will, upon written notification thereof and substantiation that the goods have been stored, installed, maintained and operated in accordance with recognized engineering and piping practices and industry standards, correct such defects by suitable repair or replacement (which alternative shall be at the discretion of SCI) of product at SCI's own expense upon return of the defective part to SCI.

In the event that SCI elects to replace the defective product, SCI shall pay up to \$50 per defective product for total cost of replacement. In the event of multiple claims, such payment shall be no greater than \$1,000 for each installation project.

This warranty applies only during normal use that meets the above referenced conditions of installation and operation and is absolutely void if the product has been damaged after purchase or if it has been misused, repaired, altered or modified in any manner whatsoever. SCI shall not warranty any of its products if any portion of the product including without limitation, any component, gasket, housing or bolt has been modified, altered, remanufactured or replaced in any manner by any customer, user of the product or third party.

Correction of non-conformities, in the manner and for the period of time provided above, shall constitute fulfillment of all liabilities of SCI to our initial purchaser, with respect to the goods, whether based on contract, negligence, strict tort, or otherwise. It is the intention of SCI that no warranty of any kind, whether expressed or implied shall pass through our initial purchaser to any other person or corporation.

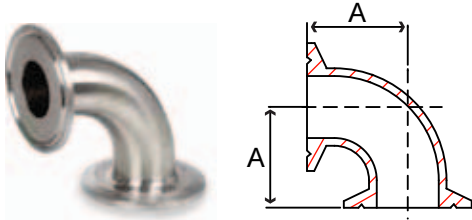
No returns will be allowed unless prior written permission of SCI is first obtained. Buyers shall be responsible for all costs of transportation as well as a restocking charge.

This warranty is exclusively for the benefit of the initial purchaser of this product from SCI and, except to the extent prohibited by applicable law, the foregoing warranty is in lieu of all other warranties, express or implied, including but not limited to warranties of fitness or merchantability.

LIMITATIONS OF LIABILITY: SCI shall not under any circumstances be liable for special or consequential damages such as, but not limited to damage to loss of other property or equipment, loss of profits or revenue, cost of capital, cost of purchased or replacement goods, claims of customers of our initial purchaser, any labor cost for repair or replacement of the product or damage caused by the product.

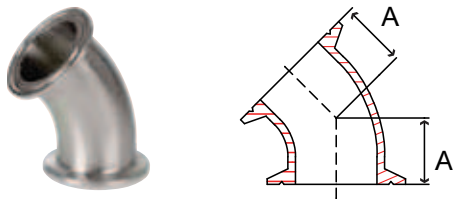
The remedies of our initial purchaser, and all others, set forth herein are exclusive, and the liability of SCI with respect to same shall not, except as expressly provided herein, exceed the price of the SCI products on which such liability is based.

Fig. S772CMP4 & S772CMP6 – 90° Elbow



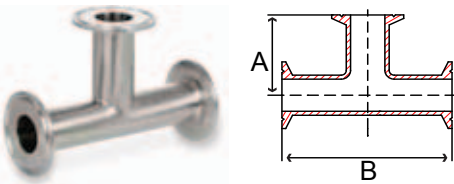
Tube OD IN	Part Number		A IN	Packing		Weight LB
	304	316/L		Inner	Master	
1/2	-	S772CMP6004	1.625	25	100	0.2
3/4	-	S772CMP6006	1.625	25	100	0.2
1	S772CMP4010	S772CMP6010	2.000	14	28	0.3
1-1/2	S772CMP4014	S772CMP6014	2.750	8	16	0.4
2	S772CMP4020	S772CMP6020	3.500	4	8	0.8
2-1/2	S772CMP4024	S772CMP6024	4.250	2	4	1.0
3	S772CMP4030	S772CMP6030	5.000	-	4	2.0
4	S772CMP4040	S772CMP6040	6.625	-	1	3.6
6	S772CMP4060	S772CMP6060	10.500	-	1	3.4

Fig. S772KMP4 & S772KMP6 – 45° Elbow



Tube OD IN	Part Number		A IN	Packing		Weight LB
	304	316/L		Inner	Master	
1	S772KMP4010	S772KMP6010	1.125	-	1	0.2
1-1/2	S772KMP4014	S772KMP6014	1.438	-	1	0.3
2	S772KMP4020	S772KMP6020	1.750	-	1	0.5
2-1/2	S772KMP4024	S772KMP6024	2.062	-	1	0.6
3	S772KMP4030	S772KMP6030	2.375	-	1	1.2
4	S772KMP4040	S772KMP6040	3.125	-	1	2.2

Fig. S777MP4 & S777MP6 – Tee



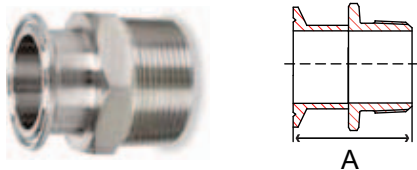
Tube OD IN	Part Number		A IN	B IN	Packing		Weight LB
	304	316/L			Inner	Master	
1/2	-	S777MP6004	2.250	4.500	20	40	0.3
3/4	-	S777MP6006	2.375	4.750	20	40	0.4
1	S777MP4010	S777MP6010	2.625	5.250	6	12	0.3
1-1/2	S777MP4014	S777MP6014	2.875	5.750	4	8	0.4
2	S777MP4020	S777MP6020	3.375	6.750	-	4	0.8
2-1/2	S777MP4024	S777MP6024	3.625	7.250	-	3	1.0
3	S777MP4030	S777MP6030	3.875	7.750	-	1	2.0
4	S777MP4040	S777MP6040	4.750	9.500	-	1	3.6
6	S777MP4060	S777MP6060	7.125	14.250	-	1	6.91

Fig. S7716AMP4 & S7716AMP6 – Solid End Cap



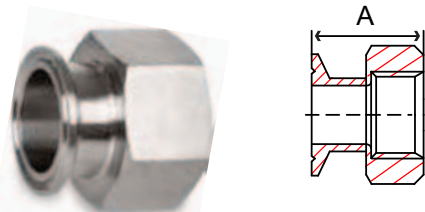
Tube OD IN	Part Number		A IN	B IN	Packing		Weight LB
	304	316/L			Inner	Master	
1-1/2	S7716AMP4014	S7716AMP6014	1.984	0.250	70	280	0.1
2	S7716AMP4020	S7716AMP6020	2.516	0.250	30	120	0.3
2-1/2	S7716AMP4024	S7716AMP6024	3.047	0.250	20	80	0.4
3	S7716AMP4030	S7716AMP6030	3.579	0.250	10	40	0.9
4	S7716AMP4040	S7716AMP6040	4.682	0.312	8	16	1.2

Fig. S7721MP4 & S7721MP6 – Male Adapter



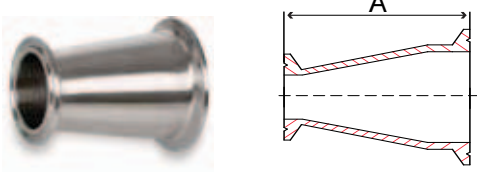
Size IN	Part Number		A IN	Packing		Weight LB
	304	316/L		Inner	Master	
1-1/2 x 1-1/2	S7721MP4014	S7721MP6014	2.437	8	32	0.3
1-1/2 x 2	S7721MP4020	S7721MP6020	2.625	6	24	0.7
2 x 1-1/2	S7721MP4020014	S7721MP6020014	2.468	2	8	1.4

Fig. S7722MP4 & S7722MP6 – Female Adapter



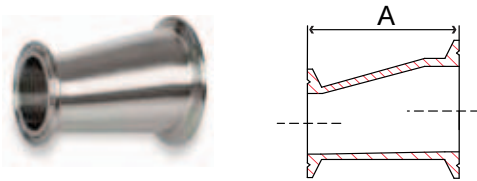
Size IN	Part Number		A IN	Packing		Weight LB
	304	316/L		Inner	Master	
1-1/2 x 1-1/2	S7722MP4014	S7722MP6014	2.250	8	32	0.8
1-1/2 x 2	S7722MP4020	S7722MP6020	2.250	8	32	1.3
2 x 1-1/2	S7722MP4020014	S7722MP6020014	1.656	2	8	0.8

Fig. S773114MP4 & S773114MP6 – Concentric Reducer



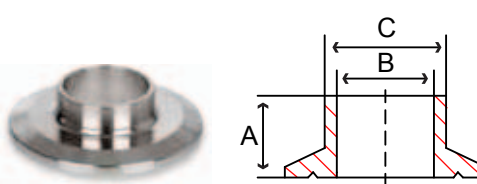
Tube OD IN	Part Number		A IN	Packing		Weight LB
	304	316/L		Inner	Master	
1 x 3/4	-	S773114MP610006	2.000	12	48	0.3
2 x 1	S773114MP420010	S773114MP620010	5.000	8	32	0.5
2 x 1-1/2	S773114MP420014	S773114MP620014	3.000	4	16	0.4
2-1/2 x 1-1/2	S773114MP424014	S773114MP624014	5.000	2	8	0.6
3 x 1-1/2	S773114MP430014	S773114MP630014	7.000	2	4	1.2
3 x 2	S773114MP430020	S773114MP630020	5.000	-	4	1.0
3 x 2-1/2	S773114MP430024	S773114MP630024	3.000	2	8	0.7
4 x 2	S773114MP440020	S773114MP640020	9.125	-	3	3.0
4 x 2-1/2	S773114MP440024	S773114MP640024	7.125	-	3	2.7
4 x 3	S773114MP440030	S773114MP640030	5.125	-	4	3.0

Fig. S773214MP4 & S773214MP6 – Eccentric Reducer



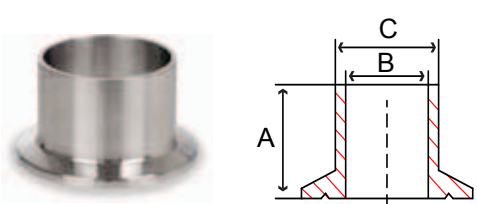
Tube OD IN	Part Number		A IN	Packing		Weight LB
	304	316/L		Inner	Master	
2 x 1-1/2	S773214MP420014	S773214MP620014	3.000	4	16	0.4
2-1/2 x 2	S773214MP424020	S773214MP624020	3.000	2	8	0.5
3 x 1-1/2	S773214MP430014	S773214MP630014	7.000	2	4	1.2
3 x 2	S773214MP430024	S773214MP630020	4.625	4	8	1.0
3 x 2-1/2	S773214MP430024	S773214MP630024	3.000	2	8	0.7
4 x 2	S773214MP440020	S773214MP640020	9.125	-	3	3.0
4 x 2-1/2	S773214MP440024	S773214MP640024	7.125	-	3	2.7
4 x 3	S773214MP440030	S773214MP640030	5.125	-	4	3.0

Fig. S7714WMP4 & S7714WMP6 – Short-weld Ferrule



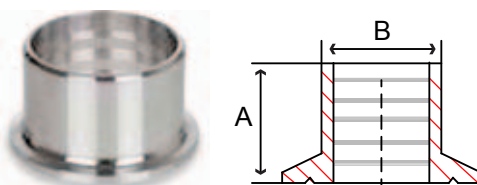
Tube OD IN	Part Number		A IN	B IN	C IN	Packing		Weight LB
	304	316/L				Inner	Master	
1	S7714WMP4010	S7714WMP6010	0.500	0.870	1.000	45	180	0.1
1-1/2	S7714WMP4014	S7714WMP6014	0.500	1.370	1.500	40	160	0.1
2	S7714WMP4020	S7714WMP6020	0.500	1.870	2.000	20	80	0.1
2-1/2	S7714WMP4024	S7714WMP6024	0.500	2.370	2.500	15	60	0.1
3	S7714WMP4030	S7714WMP6030	0.500	2.870	3.000	10	40	0.2
4	S7714WMP4040	S7714WMP6040	0.625	3.834	4.000	10	20	0.3

Fig. S77L14AM74 & S77L14AM76 – Long-weld Ferrule



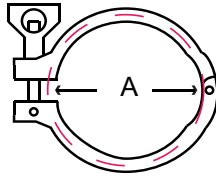
Tube OD IN	Part Number		A IN	B IN	C IN	Packing		Weight LB
	304	316/L				Inner	Master	
1	S77L14AM74010	S77L14AM76010	1.125	0.870	1.000	20	80	0.1
1-1/2	S77L14AM74014	S77L14AM76014	1.125	1.370	1.500	18	72	0.1
2	S77L14AM74020	S77L14AM76020	1.125	1.870	2.000	10	40	0.2
2-1/2	S77L14AM74024	S77L14AM76024	1.125	2.370	2.500	6	24	0.2
3	S77L14AM74030	S77L14AM76030	1.125	2.870	3.000	5	20	0.3
4	S77L14AM74040	S77L14AM76040	1.125	3.834	4.000	6	12	0.5

Fig. S7714RMP4 & S7716RMP6 – Recessless (Roll-on) Ferrule



Tube OD IN	Part Number		A IN	B IN	Packing		Weight LB
	304	316/L			Inner	Master	
1	S7714RMP4010	S7714RMP6010	0.750	1.000	30	120	0.1
1-1/2	S7714RMP4014	S7714RMP6014	1.125	1.500	20	80	0.1
2	S7714RMP4020	S7714RMP6020	1.313	2.000	8	32	0.2
2-1/2	S7714RMP4024	S7714RMP6024	1.375	2.500	5	20	0.3
3	S7714RMP4030	S7714RMP6030	1.438	3.000	4	16	0.4
4	S7714RMP4040	S7714RMP6040	1.500	4.000	4	8	0.7

Fig. S7713MHHM4 – Heavy Duty Clamp



Tube OD IN	Part Number		A IN	Packing		Weight LB
	304			Inner	Master	
1/2 & 3/4	S7713MHHM4006		1.109	25	100	0.2
1 & 1-1/2	S7713MHHM4014		2.122	10	40	0.6
2	S7713MHHM4020		2.654	10	40	0.7
2-1/2	S7713MHHM4024		3.185	14	28	0.8
3	S7713MHHM4030		3.717	12	24	1.0
4	S7713MHHM4040		4.820	5	10	1.2
6	S7713MHHM4060		6.695	-	1	3.7

Fig. S7740MPE, S7740MPG & S7740MPU – Gaskets



EPDM & Buna-N

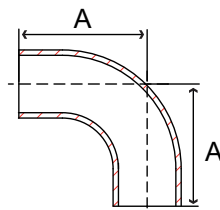


PTFE

Size IN	EPDM Gasket* Part Number -55°F to 275°F	PTFE Gasket Part Number -40°F to 450°F	BUNA-N Gasket Part Number -30°F to 200°F
1	S7740MPE010	S7740MPG010	S7740MPU010
1-1/2	S7740MPE014	S7740MPG014	S7740MPU014
2	S7740MPE020	S7740MPG020	S7740MPU020
2-1/2	S7740MPE024	S7740MPG024	S7740MPU024
3	S7740MPE030	S7740MPG030	S7740MPU030
4	S7740MPE040	S7740MPG040	S7740MPU040

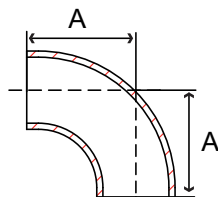
*Do not use with any hydrocarbons

Fig. S77L2S4 & S77L2S6 – 90° Tube Bend (Long Radius)



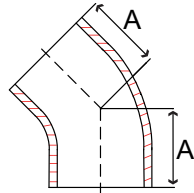
Tube OD IN	Part Number		A IN	Packing		Weight LB
	304	316/L		Inner	Master	
1	S77L2S4010	S77L2S6010	2.063	30	60	0.1
1-1/2	S77L2S4014	S77L2S6014	2.938	8	16	0.4
2	S77L2S4020	S77L2S6020	4.063	3	6	0.7
2-1/2	S77L2S4024	S77L2S6024	5.188	-	5	1.2
3	S77L2S4030	S77L2S6030	6.938	-	2	1.8
4	S77L2S4040	S77L2S6040	8.938	-	1	4.2

Fig. S772WCL4 & S772WCL6 – 90° Tube Bend (Short Radius)



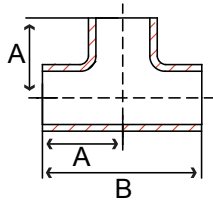
Tube OD IN	Part Number		A IN	Packing		Weight LB
	304	316/L		Inner	Master	
1/2	-	S772WCL6004	0.750	200	800	0.05
3/4	-	S772WCL6006	1.125	100	400	0.07
1	S772WCL4010	S772WCL6010	1.500	24	96	0.1
1-1/2	S772WCL4014	S772WCL6014	2.250	6	24	0.3
2	S772WCL4020	S772WCL6020	3.000	6	12	0.5
2-1/2	S772WCL4024	S772WCL6024	3.750	-	5	0.8
3	S772WCL4030	S772WCL6030	4.500	-	4	1.2
4	S772WCL4040	S772WCL6040	6.000	-	2	2.6
6	S772WCL4060	S772WCL6060	9.000	-	1	2.0

Fig. S77L2KS4 & S77L2KS6 – 45° Tube Bend (Long Radius)



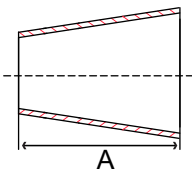
Tube OD IN	Part Number		A IN	Packing		Weight LB
	304	316/L		Inner	Master	
1	S77L2KS4010	S77L2KS6010	1.188	30	60	0.1
1-1/2	S77L2KS4014	S77L2KS6014	1.625	18	36	0.2
2	S77L2KS4020	S77L2KS6020	2.313	4	8	0.5
2-1/2	S77L2KS4024	S77L2KS6024	3.000	2	4	0.8
3	S77L2KS4030	S77L2KS6030	3.688	2	4	1.2
4	S77L2KS4040	S77L2KS6040	4.813	-	2	2.5

Fig. S77L7W4 & S77L7W6 – Tee



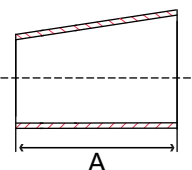
Tube OD IN	Part Number		A IN	B IN	Packing		Weight LB
	304	316/L			Inner	Master	
1/2	-	S77L7W6004	1.500	3.000	40	160	0.1
3/4	-	S77L7W6006	2.000	4.000	15	60	0.2
1	S77L7W4010	S77L7W6010	1.875	3.750	12	48	0.1
1-1/2	S77L7W4014	S77L7W6014	2.250	4.500	8	16	0.3
2	S77L7W4020	S77L7W6020	3.000	6.000	-	8	0.6
2-1/2	S77L7W4024	S77L7W6024	3.000	6.000	-	5	0.7
3	S77L7W4030	S77L7W6030	3.250	6.500	-	3	1.0
4	S77L7W4040	S77L7W6040	3.875	7.750	-	1	2.4
6	S77L7W4060	S77L7W6060	5.000	10.00	-	1	4.8

Fig. S77L31W4 & S77L31W6 – Concentric Reducer



Tube OD IN	Part Number		A IN	Packing		Weight LB
	304	316/L		Inner	Master	
3/4 x 1/2	-	S77L31W6006004	-	256	1024	0.05
2 x 1	S77L31W4020010	S77L31W6020010	2.5	12	48	0.5
2 X 1-1/2	S77L31W4020014	S77L31W6020014	2.0	10	40	0.3
2-1/2 X 2	S77L31W4024020	S77L31W6024020	2.0	10	40	0.2
3 X 1-1/2	S77L31W4030014	S77L31W6030014	6.0	1	4	0.8
3 x 2	S77L31W4030020	S77L31W6030020	3.0	2	8	0.6
3 X 2-1/2	S77L31W4030024	S77L31W6030024	2.0	4	16	0.3
4 X 2	S77L31W4040020	S77L31W6040020	8.0	2	4	1.4
4 X 2-1/2	S77L31W4040024	S77L31W6040024	6.0	2	4	1.1
4 X 3	S77L31W4040030	S77L31W6040030	4.0	2	4	0.6

Fig. S77L32W4 & S77L32W6 – Eccentric Reducer



Tube OD IN	Part Number		A IN	Packing		Weight LB
	304	316/L		Inner	Master	
2 X 1-1/2	S77L32W4020014	S77L32W6020014	2.0	10	40	0.4
2-1/2 X 2	S77L32W4024020	S77L32W6024020	2.0	5	20	0.3
3 X 1-1/2	S77L32W4030014	S77L32W6030014	6.0	1	4	0.8
3 X 2-1/2	S77L32W4030024	S77L32W6030024	2.0	4	16	0.4
4 X 2	S77L32W4040020	S77L32W6040020	8.0	2	4	1.5
4 X 2-1/2	S77L32W4040024	S77L32W6040024	6.0	2	4	1.3
4 X 3	S77L32W4040030	S77L32W6040030	4.0	2	4	0.9

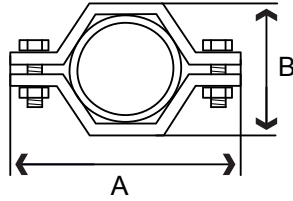


Fig. S77TH4P4 – Hanger with Sleeves

Tube OD IN	Part Number	A IN	B IN	Weight LB
1	S77TH4P4010	3.425	1.45	0.45
1-1/2	S77TH4P4014	4.00	2.125	0.50
2	S77TH4P4020	4.50	2.50	0.55
2-1/2	S77TH4P4024	4.75	3.125	0.65
3	S77TH4P4030	5.50	3.75	0.75
4	S77TH4P4040	6.75	4.75	0.90
6	S77TH4P4060	9.25	6.85	1.90

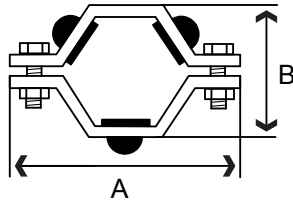
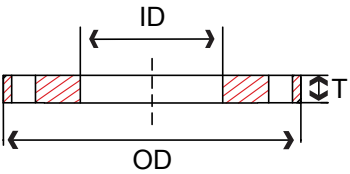


Fig. S77TH4R – Hanger with Grommets

Tube OD IN	Part Number	A IN	B IN	Weight LB
1	S77TH4R010	3.425	1.45	0.45
1-1/2	S77TH4R014	4.00	2.125	0.50
2	S77TH4R020	4.50	2.50	0.55
2-1/2	S77TH4R024	4.75	3.125	0.65
3	S77TH4R030	5.50	3.75	0.75
4	S77TH4R040	6.75	4.75	0.90
6	S77TH4R060	9.25	6.85	1.90

Fig. S1414SOTP – Tube Plate Flanges



Tube OD IN	Part Numbers		T IN	OD IN	ID IN	Number of Holes	Hole Diameter IN	Bolt Circle IN
	304	316						
1	S1414SOTP010	S1416SOTP010	0.500	4.25	1.063	4	0.625	3.12
1-1/4	S1414SOTP012	S1416SOTP012	0.500	4.62	1.313	4	0.625	3.50
1-1/2	S1414SOTP014	S1416SOTP014	0.500	5.00	1.563	4	0.625	3.88
2	S1414SOTP020	S1416SOTP020	0.500	6.00	2.063	4	0.750	4.75
2-1/2	S1414SOTP024	S1416SOTP024	0.500	7.00	2.563	4	0.750	5.50
3	S1414SOTP030	S1416SOTP030	0.500	7.50	3.063	4	0.750	6.00
4	S1414SOTP040	S1416SOTP040	0.500	9.00	4.063	8	0.750	7.50
6	S1414SOTP060	S1416SOTP060	0.500	11.00	6.063	8	0.875	9.50
8	S1414SOTP080	S1416SOTP080	0.500	13.50	8.063	8	0.875	11.75
10	S1414SOTP100	S1416SOTP100	0.500	16.00	10.063	12	1.00	14.25
12	S1414SOTP120	S1416SOTP120	0.500	19.00	12.063	12	1.00	17.00

Stainless Steel Plate Flanges made from ASTM A240 (Plate) or cast in conformance with ASTM A351



Fig. S62TP – Sanitary Tubing

Tube OD IN	Part Number		Wall Thickness IN	I.D. IN	Weight / Foot LB
	304	316			
1	S62TP46010	S62TP66010	0.065	0.870	0.64
1-1/2	S62TP46014	S62TP66014	0.065	1.370	0.99
2	S62TP46020	S62TP66020	0.065	1.870	1.34
2-1/2	S62TP46024	S62TP66024	0.065	2.370	1.69
3	S62TP46030	S62TP66030	0.065	2.870	2.03
4	S62TP48040	S62TP68040	0.083	3.834	3.47
6	S62TP49060	-	0.109	5.782	5.30

Stainless Steel Tubing conforms to ASTM A269 / A270 and 3-A approved

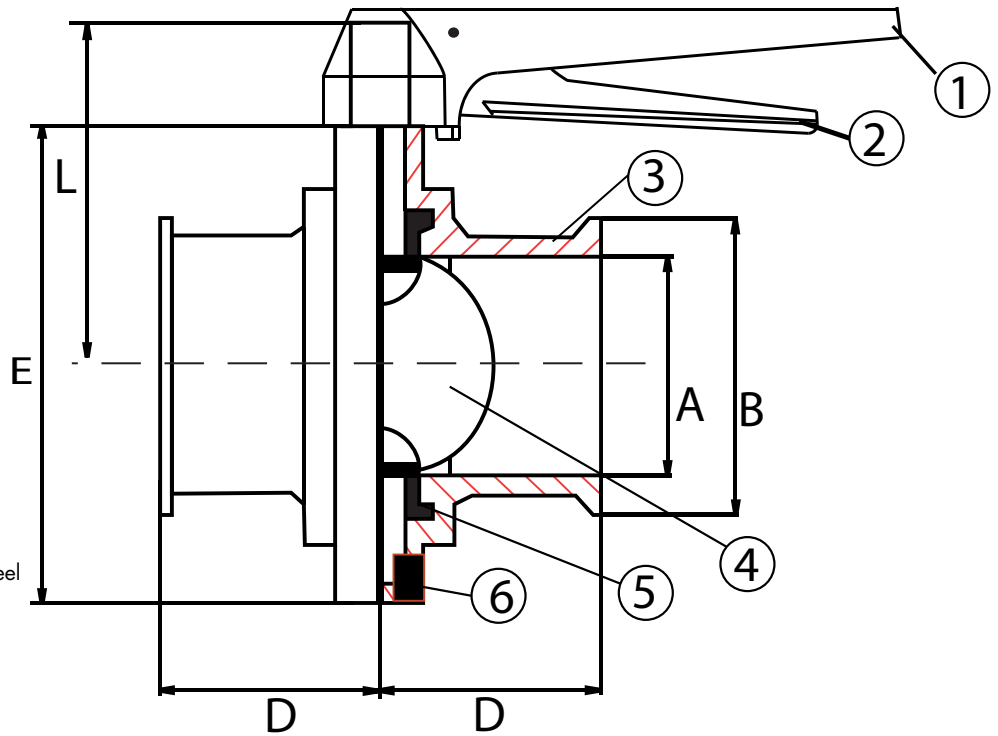


Sharpe Valves Series 15 Sanitary Butterfly Valve



Port: Tube Port
 Size: 1" to 4"
 Material: 304 Stainless Steel
 Ends: Clamp Ends
 Pressure: 150 PSI
 Temperature: 200° F

- 304 stainless steel precision milled body
- Sharpe Logo, Material Grade, Size, Heat Number and Country of Origin engraved on each valve body
- Disc fully machined and polished
- Pull handle 4 position, Blue 12 position handle, Stainless Steel 12 position Handle
- Hygienic seating design
- Automation available upon request



No.	Part Name	Material
1	Handle	Plastic
2	Gripper	Stainless Steel
3	Body	304SS
4	Disc	304SS
5	Seat	EPDM
6	Bolt	304SS

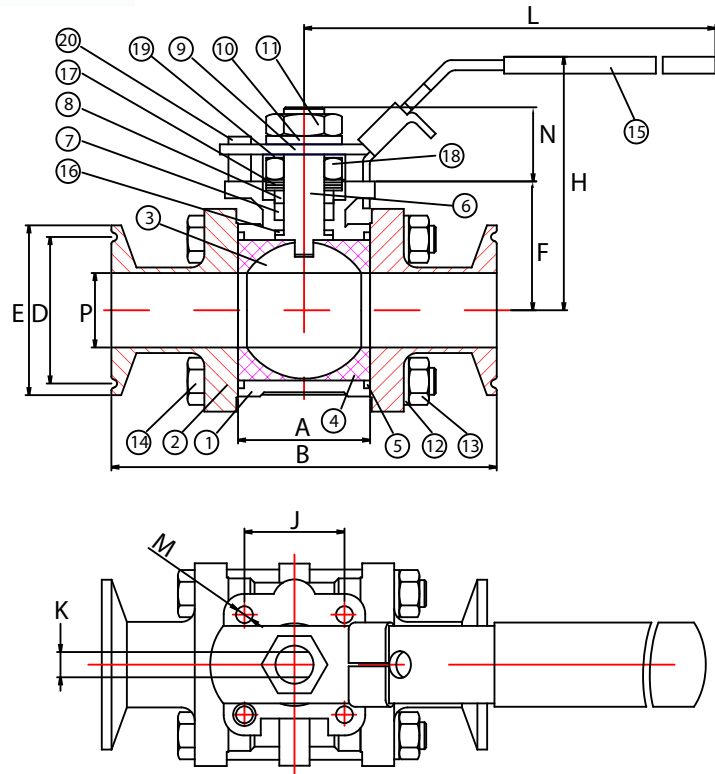
Nominal Tube Size IN	Part Number	A IN	B IN	D IN	E IN	L IN
1	SV154ECC21010	0.87	1.99	1.75	3.11	2.40
1-1/2	SV154ECC21014	1.37	1.99	1.75	3.35	2.53
2	SV154ECC21020	1.87	2.52	1.87	4.13	2.93
2-1/2	SV154ECC21024	2.37	3.05	1.91	4.41	3.06
3	SV154ECC21030	2.84	3.58	2.03	4.92	3.34
4	SV154ECC21040	3.84	4.69	2.03	6.18	4.00

Part Number Listed is for 304 SS Body, EPDM Seat, Tri Clamp Ends, 25 RA Finish, and 12 Position Handle.
 Other configurations available upon request



- Port: Full Tube Port
- Size: 1/2" to 2-1/2"
- Material: 316 Stainless Steel
- Ends: Tri-Clamp Ends, Extended Butt Weld, Short Butt Weld
- Pressure: 1000 PSI
- Temperature: 450° F
- 3-Piece design
- High cycle stem design
- Integral ISO 5211 mounting pad
- Lockable handle lever or oval handle
- Hygienic seating design
- Live loaded stem packing
- Blow out proof stem
- Cavity-Filled Seats Available

No.	Part Name	Material
1	Body	CF8M
2	End Cap	CF8M
3	Ball	316
4	Seats	TFM
5	Body Gasket	PTFE
6	Stem	316
7	Gland Packing	PTFE
8	Gland	Stainless Steel
9	Handle	Stainless Steel
10	Stem Washer	Stainless Steel
11	Stem Nut	Stainless Steel
12	Bolts Washer	Stainless Steel
13	Bolts Nut	Stainless Steel
14	Bolts	Stainless Steel
15	Cover	P.V.C.
16	Thrust Washer	PTFE
17	Belleville	Stainless Steel
18	Gland Nut	Stainless Steel
19	Lock Tab	Stainless Steel
20	Stop Pin	Stainless Steel



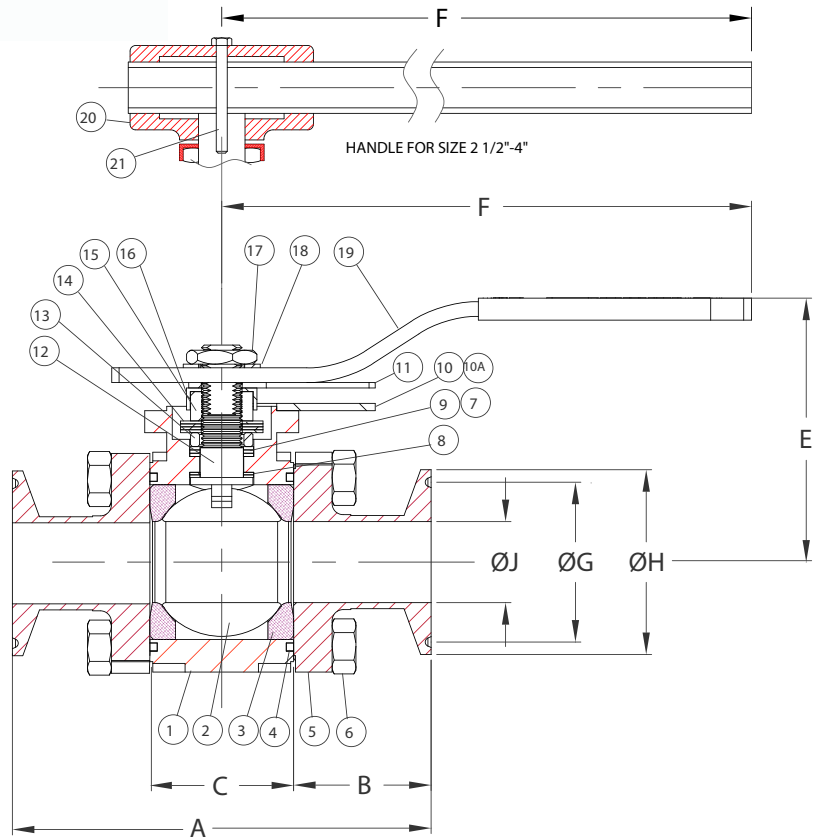
Nominal Tube Size IN	Part Number	A IN	B IN	D IN	E IN	F IN	H IN	J IN	K IN	L IN	M IN	N IN	P IN
1/2	SVN6666MTCE004	0.96	3.5	0.75	0.98	1.14	2.44	1	0.22	4.92	M5	0.65	0.37
3/4	SVN6666MTCE006	1.05	4	0.75	0.98	1.2	2.5	1	0.22	4.92	M5	0.65	0.62
1	SVN6666MTCE010	1.54	4.5	1.71	2	1.5	2.96	1.16	0.3	5.71	M5	0.8	0.87
1-1/2	SVN6666MTCE014	2.13	5.5	1.71	2	1.91	3.38	1.39	0.34	7.48	M6	1.14	1.37
2	SVN6666MTCE020	2.65	6.25	2.2	2.52	2.24	3.77	1.39	0.34	7.48	M6	1.14	1.87
2-1/2	SVN6666MTCE024	3.20	6.50	3.04	3.05	3.32	5.87	1.95	0.55	9.84	M8	1.48	2.37

Part number listed is for configuration listed on this page with clamp ends.
 A full listing of configurations can be found at www.sharpevalves.com



- Port: Full Tube Port
- Size: 1/2" to 4"
- Material: 316L Stainless Steel
- Ends: Tri-Clamp Ends, Extended Butt Weld, Short Butt Weld
- Pressure: 1480 PSI
- Temperature: 450° F
- 3- Piece Design
- High Cycle Stem Packing
- Encapsulated Body Bolts
- Integral ISO Mounting Pad
- Lockable, Lever, Extended or Oval Handle
- Hygienic Seating Design
- Blow Out Proof Stem
- Cavity-Filled Seats Available

No.	Part Name	Material
1	Body	CF3M
2	Ball	SS 316L
3	Seats	TFM
4	Body Seals	TFM
5	Tri-Clamp Ends	CF3M
6	Body Bolts	SS 316
7	Seal Protector	TFM
8	Thrust Washer	TFM
9	Stem Packing	TFM
10	Lower Lock Latch	Stainless Steel
10A	Lower Lock Bolt	Stainless Steel
11	Upper Lock Latch	Stainless Steel
12	Stem	SS 316L
13	Gland Packing	Stainless Steel
14	Belleville Washer	Stainless Steel
15	Packing Nut	Stainless Steel
16	Lock Tab	Stainless Steel
17	Stem Nut	Stainless Steel
18	Lock Washer	Stainless Steel
19	Handle	Stainless Steel
20	Wrench Block	Stainless Steel
21	Hex head Bolt	Stainless Steel



Nominal Tube Size IN	Part Number	A IN	B IN	C IN	E IN	F IN	G IN	H IN	J IN
1/2	SV6666MTCE004	3.50	1.26	0.97	1.76	5.53	0.80	0.95	0.37
3/4	SV6666MTCE006	4.00	1.47	1.05	1.87	4.50	0.80	0.95	0.62
1	SV6666MTCE010	4.50	1.48	1.54	2.40	5.75	1.72	1.98	0.87
1-1/2	SV6666MTCE014	5.50	1.69	2.13	3.16	7.00	1.72	1.98	1.37
2	SV6666MTCE020	6.91	2.13	2.65	3.35	7.00	2.22	2.52	1.87
2-1/2	SV6666MTCE024	6.74	1.77	3.20	5.58	10.00	2.78	3.05	2.37
3	SV6666MTCE030	6.75	1.39	3.97	7.25	13.80	3.28	3.58	2.87
4	SV6666MTCE040	8.24	1.76	4.73	7.84	22.00	4.35	4.68	3.83

Part number listed is for configuration listed on this page with clamp ends.
 A full listing of configurations and flow plans can be found at www.sharpevalves.com

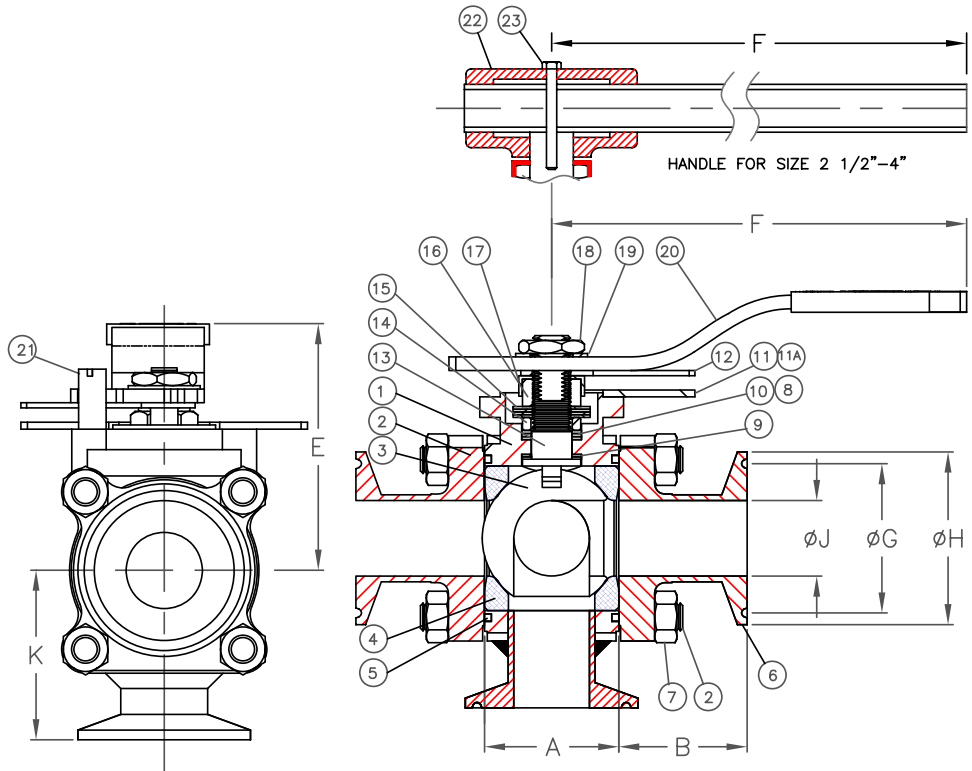
Sharpe Valves Series D88 Ball Valve



Port: Tube Full Port
 Size: 1/2" to 4"
 Material: 316L Stainless Steel
 Ends: Tri-Clamp Ends, Extended Butt Weld, Short Butt Weld
 Pressure: 1480 PSI
 Temperature: 450° F

- ASME/BPE - 2009 compliant
- 3- Piece design
- High cycle stem design
- Encapsulated body bolts
- Variety of seats, seals and aseptic end connections
- Integral mounting pad
- Lockable, lever, extended or oval handle
- All wetted parts polished to 14-18 RA
- Optional 8-10 RA electro polish
- Optional purge ports available

No.	Part Name	Material
1	Body	CF3M
2	Body Bolts	Stainless Steel
3	Ball	CF8M
4	Seats	PTFE
5	Body Seals	PTFE
6	Tri-Clamp End	CF3M
7	Body Nuts	CF8M
8	Seal Protector	PEEK
9	Thrust Washer	PEEK
10	Stem Packing	PTFE
11	Lower Lock Latch	Stainless Steel
11A	Lower Latch Bolt	Stainless Steel
12	Upper Latch Bolt	Stainless Steel
13	Stem	CF8M
14	Gland Packing	CF8M
15	Belleville Washer	Stainless Steel
16	Packing Nut	Stainless Steel
17	Lock Tab	Stainless Steel
18	Stem Nut	Stainless Steel
19	Lock Washer	Stainless Steel
20	Handle	Stainless Steel
21	Stop Bolt	Stainless Steel
22	Wrench Block	Stainless Steel
23	Hex Head Bolt	Stainless Steel



Nominal Tube Size IN	Part Number	A IN	B IN	E IN	F IN	G IN	H IN	J IN	K IN
1/2	SVD8866RTCEP11004	0.97	1.26	2.24	5.53	0.80	0.98	0.37	1.70
3/4	SVD8866RTCEP21006	1.05	1.47	2.24	4.50	0.80	0.98	0.62	1.80
1	SVD8866RTCEP21010	1.54	1.48	2.62	5.79	1.72	1.98	0.87	1.95
1-1/2	SVD8866RTCEP21014	2.13	1.69	3.21	7.00	1.72	1.98	1.37	2.30
2	SVD8866RTCEP21020	2.64	2.13	3.83	7.00	2.22	2.52	1.87	2.50
2-1/2	SVD8866RTCEP21024	3.20	1.77	5.94	8.74	2.78	3.05	2.37	2.65
3	SVD8866RTCEP21030	3.96	1.39	7.68	13.80	3.28	3.58	2.87	3.20
4	SVD8866RTCEP21040	4.73	1.76	8.27	13.80	4.35	4.68	3.83	3.60

Part number listed is for configuration listed on this page with the addition of a L-Port 90° Turn Ball and 240 Grit Clamp Ends.
 A full listing of configurations and flow plans can be found at www.sharpevalves.com

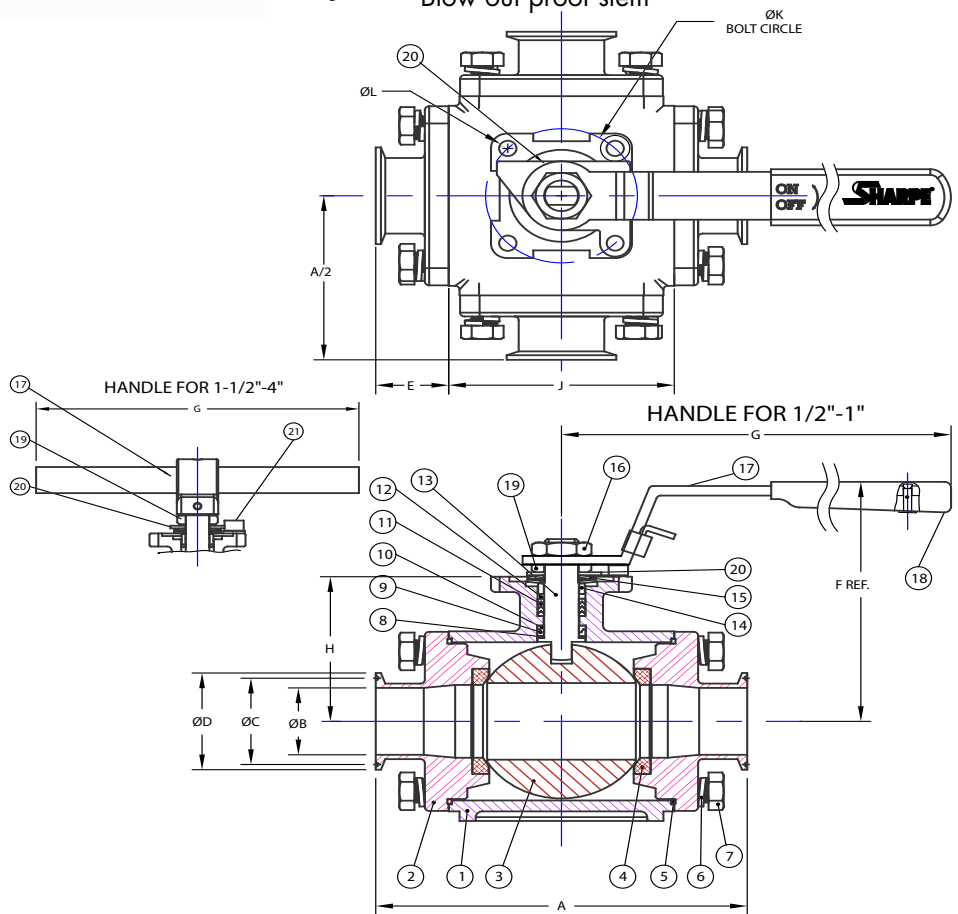


Size: Full Port 1/2" to 4"
 Material: 316 Stainless Steel
 Ends: Tri-Clamp Ends, Extended Butt Weld, Short Butt Weld

Pressure: 600 PSI
 Temperature: 450° F

- ASME B16.5
- ASME B16.11
- 4-Seat design
- Double stem seals; stem design
- Trunnion-supported ball for 2" and larger
- ISO 5211 mounting pad
- T, L, and double L balls
- Live loaded stem packing
- Blow out proof stem

No.	Part Name	Material
1	Body	CF8M
2	Cap	CF8M
3	Ball	CF8M
4	Seats	TFM/RTFE
5	Body Gasket	PTFE
6	Bolt Washer	Stainless Steel
7	Bolt	A2-70
8	Low Thrust Washer	50% SS Powder / 50% PTFE
9	Compression Ring	SS316
10	Upper Thrust Washer	TFM1600
11	V-Ring Stem Packing	PTFE
12	Thrust Washer	50% SS Powder / 50% PTFE
13	Anti-Static Stem	A276 Type 316
14	Gland	Stainless Steel
15	Belleville Washer	SS301
16	Bolt Nut	Stainless Steel
17	Handle	Stainless Steel
18	Handle Sleeve	Vinyl
19	Lock Saddle	Stainless Steel
20	Triangle Stopper	Stainless Steel
21	Stop Bolt	A2-70



Nominal Tube Size IN	Part Number	A IN	B IN	C IN	D IN	E IN	F IN	G IN	H IN	J IN	K IN	L IN
1/2	SV7766MT6G9004	5.39	0.37	0.80	0.98	1.45	3.23	4.50	1.66	2.48	1.65	0.24
3/4	SV7766MT6G9006	5.58	0.63	0.80	0.98	1.43	3.38	5.12	2.18	2.73	1.97	0.28
1	SV7766MT6G9010	6.20	0.87	1.71	1.99	1.52	3.86	5.12	2.18	3.15	1.97	0.28
1-1/2	SV7766MT6G9014	6.74	1.37	1.71	1.99	1.32	5.03	9.84	3.32	4.09	2.75	0.35
2	SV7766MT6G9020	7.30	1.87	1.87	2.52	1.50	5.43	9.84	3.57	4.29	4.29	0.35
2-1/2	SV7766MT6G9024	8.54	2.37	2.78	3.05	1.77	6.37	19.50	3.82	5.00	5.00	0.47
3	SV7766MT6G9030	9.54	2.87	3.28	3.58	1.75	7.23	19.50	4.25	6.03	6.03	0.47
4	SV7766MT6G9040	11.44	3.83	4.34	4.68	2.04	8.39	23.42	5.08	7.36	7.36	0.47

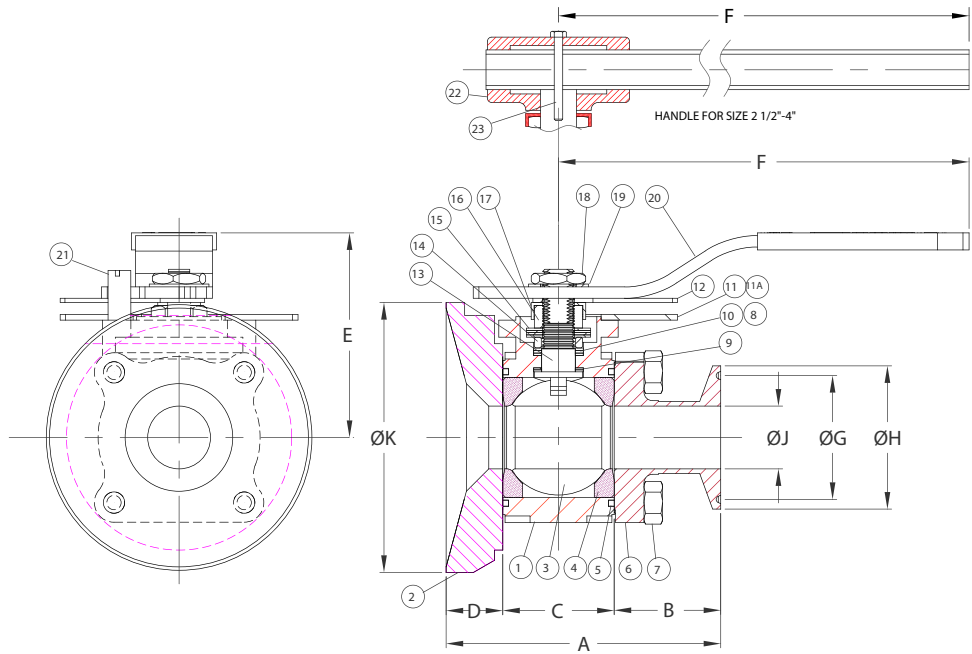
Part number listed is for configuration listed on this page with the addition of a L-Port 90° Turn Ball and 240 Grit Clamp Ends.
 A full listing of configurations and flow plans can be found at www.sharpevalves.com



Port: Full Tube Port
 Size: 1/2" to 4"
 Material: 316L Stainless Steel
 Ends: Tri-Clamp Ends, Extended Butt Weld, Short Butt Weld
 Pressure: 1480 PSI
 Temperature: 450° F

- 3-Piece design
- High cycle stem packing
- Encapsulated body bolts
- Variety of seats and seals
- Integral ISO mounting pad
- Lockable, lever, extended or oval handle
- Hygienic seating design
- Blow out proof stem
- Flush pad made from solid bar stock
- Optional purge ports available

No.	Part Name	Material
1	Body	CF3M
2	Flush Bottom Flange	CF3M
3	Ball	SS 316L
4	Seats	TFM
5	Body Seals	TFM
6	Tri-Clamp Ends	CF3M
7	Body Bolts	SS 316
8	Seal Protector	TFM
9	Thrust Washer	TFM
10	Stem Packing	PTFE
11	Lower Lock Latch	Stainless Steel
11A	Lower Lock Bolt	Stainless Steel
12	Upper Lock Latch	Stainless Steel
13	Stem	SS 316L
14	Gland Packing	Stainless Steel
15	Belleville Washer	Stainless Steel
16	Packing Nut	Stainless Steel
17	Lock Tab	Stainless Steel
18	Stem Nut	Stainless Steel
19	Lock Washer	Stainless Steel
20	Handle	Stainless Steel
21	Stop Bolt	Stainless Steel
22	Wrench Block	Stainless Steel
23	Hex head Bolt	Stainless Steel



Nominal Tube Size IN	Part Number	A IN	B IN	C IN	D IN	E IN	F IN	G IN	H IN	J IN	K IN
1/2	SV6666TTCEFB006	3.02	1.26	0.97	0.79	1.76	5.53	0.80	0.95	0.37	3.74
3/4	SV6666TTCEFB006	3.31	1.47	1.05	0.79	1.87	4.50	0.80	0.95	0.62	3.74
1	SV6666TTCEFB006	3.80	1.48	1.54	0.79	2.40	5.75	1.72	1.98	0.87	3.84
1-1/2	SV6666TTCEFB006	4.92	1.69	2.13	1.10	3.16	7.00	1.72	1.98	1.37	5.50
2	SV6666TTCEFB006	5.88	2.13	2.65	1.10	3.35	7.00	2.22	2.52	1.87	5.50
2-1/2	SV6666TTCEFB006	6.30	1.77	3.20	1.34	5.58	10.00	2.78	3.05	2.37	7.00
3	SV6666TTCEFB006	7.05	1.39	3.97	1.69	7.25	13.80	3.28	3.58	2.87	10.00
4	SV6666TTCEFB006	8.42	1.76	4.73	1.93	7.84	22.00	4.35	4.68	3.83	11.00

Part number listed is for configuration listed on this page with the addition of a L-Port 90° Turn Ball and 240 Grit Clamp Ends.

A full listing of configurations and flow plans can be found at www.sharpevalves.com



SPN II - Nickel Plated Pneumatic Actuator

- Traditional Two - piston, rack and pinion design
- Available in Double Acting and Spring Return configurations
- Hard Anodized Aluminum body, Rugged Polyester coated body, with Epoxy Coated End Caps, with optional Nickel Infused coating for sanitary applications
- Standard Temperature Range with Buna O'Rings: -4F to 180F Kits for low temp (-40F to 80F) and high temperature (+5F – 300F)
- Industry Standard ISO 5211 drilling and NAMUR patterns
- Bi-Directional Travel Stops for +/- 5° adjustment for precise control
- Pinion is specially designed to accept butterfly valve shafts
- With Inserts that allows for Direct Mounting capabilities to Butterfly Valves that have Square, Double D, or Keyed shaft designs
- Mounting plates available, allowing for mounting to different industry standard bolt circles

4x4 - Pneumatic Actuator

- Unique Four - piston, rack and pinion design
- Anodized Interior and Exterior aluminum body, Polyurethane painted body, and Epoxy coated end caps
- With Industry Standard ISO 5211 drilling and NAMUR
- Multi-Function Visual Indicator can be used for Three – Way indication
- Bi-Directional Travel Stops for +/- 5° adjustment for precise control
- Available in Double Acting and Spring Return configurations
- Nested spring sets, with appropriate centering rings on piston face and end caps
- Four Pistons allow for shorter travel and faster response times
- Reduced size means less air consumption, reducing costs with quicker response
- Generates more torque for reduced cost, size and air consumption
- Pinion is supported by four pistons; as a result, piston side load is minimized



SEA III - Electric Actuator

- NEMA 4X: Waterproof and dust-proof enclosure
- Enclosure material: Dry powder coating aluminum alloy
- Standard extended duty cycle induction motor F insulation class for all models
- Built-in thermal protection (275°F) prevents motor from burning out
- All models have continuous mechanism position indicator on the top of the actuator cover
- Non-clutch design, the manual operation can be operated without any lever, clutch or brake upon power outage
- When electric motor is operating, manual hand-wheel will not rotate for safety purposes
- High alloy steel gear trains provide self-locking function to avoid valve back drive
- Gear trains have been already lubricated sufficiently with anti-high temperature lubricant at the factory
- Working conditions: ambient temperature: -22°F to 149°F and humidity: 30% to 95%





150# Fittings

304 & 316
1/8" - 4"



Weld Fittings

304L & 316L SCH 10, 40 & 80
1/2" - 12"



Nipples

304L & 316L
SCH 40 WELDED & SCH 80 SEAMLESS
1/8" - 4" DIAMETER • CLOSE - ANY LENGTH



Pipe & Sanitary Tubing

Pipe, 304/304L & 316/316L
Sch 10, 40 & 80
Welded & Seamless 1/8" - 8"
Sanitary Tubing 1" - 4"



Flanges

304/304L & 316/316L
150# & 300# • 1/2" - 12"



3000# Forged Fittings

304L & 316L
THREADED & SOCKET WELD
1/8" - 4"



Belled-End Fittings

304L & 316L
1/2" - 2"



Valves

316/316L CAST AND FORGED
150#, 200#, 300#, 600#, 800#
BALL, GATE, GLOBE, & CHECK • 1/4" - 12"



Grooved Fittings

304L & 316L
Sch 10 & Sch 40
1-1/2" - 12"



Compression Fittings

316 STAINLESS
DOUBLE FERRULE

Instrumentation Tubing

304/304L & 316/316L
WELDED & SEAMLESS • 1/16" - 1"



Fabrication & Machining

FLANGED FITTINGS MADE TO ORDER
CUSTOM MACHINING OF FLANGES



Specialty Fittings

316 KING COMBO NIPPLES
WELD SPUDS
HEX NIPPLES

SMITH-COOPER®

INTERNATIONAL

CORPORATE OFFICE TEL (800) 766-0076 LOCAL (323) 890-4455 FAX (323) 890-4456

www.smithcooper.com