

# SMITH-COOPER®

I N T E R N A T I O N A L

CORPORATE OFFICE TEL (800) 766-0076 LOCAL (323) 890-4455 FAX (323) 890-4456  
WWW.SMITHCOOPER.COM



**Cast Iron Flanged  
Fittings & Flanges**

# SMITH-COOPER®

## INTERNATIONAL



## Flanged Fittings and Flanges

### Specifications

- Manufacturing facilities are ISO 9001:2000 and ISO 14001
- Cast Iron Flanged Fittings meet the following specifications:  
ASTM A126, ANSI/AWWA C110/A21.10, ASME B16.1
- Ductile Iron Flanged Fittings meet the following specifications:  
ASTM A395, ANSI/AWWA C110/A21.10, ASME B16.42
- Independent lab verification that fittings meet applicable chemical & physical properties

### SCI Quality Plus

- Quality control inspections both at the overseas factory and our US warehouses
- Company engineer available at your request
- \$10,000,000 product liability insurance
- SCI trademark logo on each fitting
- SCI 5/50 guarantee
- Pro Pak System makes products easier to handle and warehouse
- Orders shipped within 24 hours
- Fax confirmation of every order
- Knowledgeable customer service personnel

### Warranty and Limitations of Liability

SMITH-COOPER INTERNATIONAL (SCI) warrants to its initial purchaser only, that its products which are delivered to this initial purchaser will be of the kind described in the order or price list and will be free of defects in workmanship or material for a period of five years from the date of delivery to our initial purchaser.

Should any failure to conform to this warranty appear within five years after the date of the initial delivery to our initial purchaser, SCI will, upon written notification thereof and substantiation that the goods have been stored, installed, maintained and operated in accordance with recognized engineering and piping practices and industry standards, correct such defects by suitable repair or replacement (which alternative shall be at the discretion of SCI) of product at SCI's own expense upon return of the defective part to SCI.

In the event that SCI elects to replace the defective product, SCI shall pay up to \$50 per defective product for total cost of replacement. In the event of multiple claims, such payment shall be no greater than \$1,000 for each installation project.

This warranty applies only during normal use that meets the above referenced conditions of installation and operation and is absolutely void if the product has been damaged after purchase or if it has been misused, repaired, altered or modified in any manner whatsoever. SCI shall not warrant any of its products if any portion of the product including without limitation, any component, gasket, housing or bolt has been modified, altered, remanufactured or replaced in any manner by any customer, user of the product or third party.

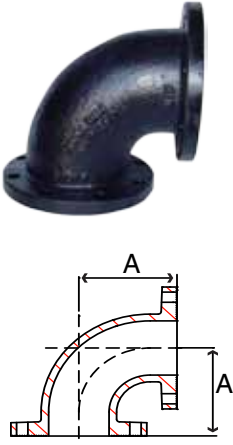
Correction of non-conformities, in the manner and for the period of time provided above, shall constitute fulfillment of all liabilities of SCI to our initial purchaser, with respect to the goods, whether based on contract, negligence, strict tort, or otherwise. It is the intention of SCI that no warranty of any kind, whether expressed or implied shall pass through our initial purchaser to any other person or corporation.

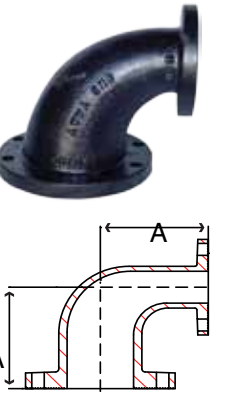
No returns will be allowed unless prior written permission of SCI is first obtained. Buyers shall be responsible for all costs of transportation as well as a restocking charge.


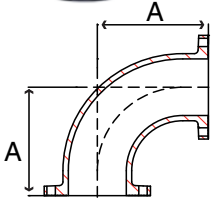
This warranty is exclusively for the benefit of the initial purchaser of this product from SCI and, except to the extent prohibited by applicable law, the foregoing warranty is in lieu of all other warranties, express or implied, including but not limited to warranties of fitness or merchantability.


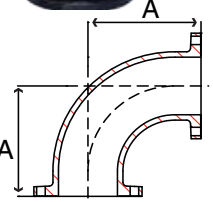
LIMITATIONS OF LIABILITY: SCI shall not under any circumstances be liable for special or consequential damages such as, but not limited to damage to loss of other property or equipment, loss of profits or revenue, cost of capital, cost of purchased or replacement goods, claims of customers of our initial purchaser, any labor cost for repair or replacement of the product or damage caused by the product.


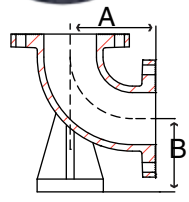
The remedies of our initial purchaser, and all others, set forth herein are exclusive, and the liability of SCI with respect to same shall not, except as expressly provided herein, exceed the price of the SCI products on which such liability is based.


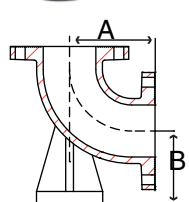
Part	Size	Part Number	Dimensions (in)			Weight (lb)	Material
			A	B	C		
	1-1/4	38E 1012D	3.75	-	-	9	150 lb. Ductile Iron
	1-1/2	38E 1014D	4.00	-	-	9	150 lb. Ductile Iron
	2	38E 1020D	4.50	-	-	14	150 lb. Ductile Iron
	2-1/2	38E 1024D	5.00	-	-	19	150 lb. Ductile Iron
	3	38E 1030D	5.50	-	-	25	150 lb. Ductile Iron
	3-1/2	38E 1034D	6.00	-	-	25	150 lb. Ductile Iron
	4	38E 1040D	6.50	-	-	45	150 lb. Ductile Iron
	5	38E 1050D	7.50	-	-	52	150 lb. Ductile Iron
	6	38E 1060D	8.00	-	-	65	150 lb. Ductile Iron
	8	38E 1080	9.00	-	-	105	125 lb. Cast Iron
	10	38E 1100	11.00	-	-	165	125 lb. Cast Iron
	12	38E 1120	12.00	-	-	255	125 lb. Cast Iron
	14	38E 1140	14.00	-	-	353	125 lb. Cast Iron
	16	38E 1160	15.00	-	-	430	125 lb. Cast Iron
	18	38E 1180	16.5	-	-	450	125 lb. Cast Iron
20	38E 1200	18.00	-	-	580	125 lb. Cast Iron	
24	38E 1240	22.00	-	-	900	125 lb. Cast Iron	

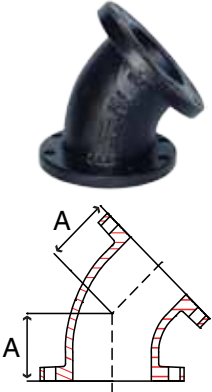
Part	Size	Part Number	Dimensions (in)			Weight (lb)	Material
			A	B	C		
	2x1-1/2	38RE1020014D	4.50	-	-	22	150 lb. Ductile Iron
	3x1-1/2	38RE1030014D	5.50	-	-	22	150 lb. Ductile Iron
	3x2	38RE1030020D	5.50	-	-	22	150 lb. Ductile Iron
	3x2-1/2	38RE1030024D	5.50	-	-	22	150 lb. Ductile Iron
	4x2	38RE1040020D	6.50	-	-	29	150 lb. Ductile Iron
	4x2-1/2	38RE1040024D	6.50	-	-	31	150 lb. Ductile Iron
	4x3	38RE1040030D	6.50	-	-	29	150 lb. Ductile Iron
	5x2	38RE1050020D	7.50	-	-	50	150 lb. Ductile Iron
	5x2-1/2	38RE1050024D	7.50	-	-	50	150 lb. Ductile Iron
	5x3	38RE1050030D	7.50	-	-	50	150 lb. Ductile Iron
	5x4	38RE1050040D	7.50	-	-	50	150 lb. Ductile Iron
	6x2	38RE1060020D	8.00	-	-	42	150 lb. Ductile Iron
	6x2-1/2	38RE1060024D	8.00	-	-	45	150 lb. Ductile Iron
	6x3	38RE1060030D	8.00	-	-	50	150 lb. Ductile Iron
	6x4	38RE1060040D	8.00	-	-	55	150 lb. Ductile Iron
	6x5	38RE1060050D	8.00	-	-	65	150 lb. Ductile Iron
	8x4	38RE1080040	9.00	-	-	80	125 lb. Cast Iron
	8x5	38RE1080050	9.00	-	-	85	125 lb. Cast Iron
	8x6	38RE1080060	9.00	-	-	85	125 lb. Cast Iron
	10x4	38RE1100040	11.00	-	-	110	125 lb. Cast Iron
	10x6	38RE1100060	11.00	-	-	130	125 lb. Cast Iron
	10x8	38RE1100080	11.00	-	-	150	125 lb. Cast Iron
	12x6	38RE1120060	12.00	-	-	188	125 lb. Cast Iron
	12x8	38RE1120080	12.00	-	-	185	125 lb. Cast Iron
	12x10	38RE1120100	12.00	-	-	210	125 lb. Cast Iron
14x12	38RE1140120	14.00	-	-	275	125 lb. Cast Iron	
16x12	38RE1160120	15.00	-	-	310	125 lb. Cast Iron	

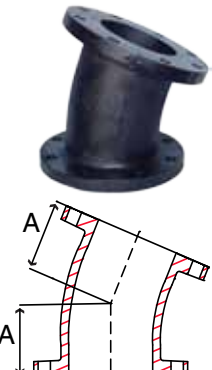
Part	Size	Part Number	Dimensions (in)			Weight (lb)	Material
			A	B	C		
 	3	38LE1030D	7.75	-	-	30	150 lb. Ductile Iron
	4	38LE1040D	9.00	-	-	50	150 lb. Ductile Iron
	6	38LE1060D	11.50	-	-	85	150 lb. Ductile Iron
	8	38LE1080	14.00	-	-	145	125 lb. Cast Iron
	10	38LE1100	16.50	-	-	225	125 lb. Cast Iron
	12	38LE1120	19.00	-	-	325	125 lb. Cast Iron
	14	38LE1140	21.50	-	-	385	125 lb. Cast Iron
	16	38LE1160	24.00	-	-	400	125 lb. Cast Iron
	18	38LE1180	26.50	-	-	630	125 lb. Cast Iron
	20	38LE1200	29.00	-	-	810	125 lb. Cast Iron
	24	38LE1240	34.00	-	-	1,240	125 lb. Cast Iron

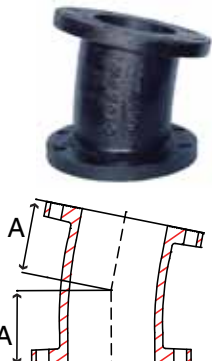
 	10x8	38LE1100080	16.50	-	-	185	125 lb. Cast Iron
	12x10	38LE1120100	19.00	-	-	360	125 lb. Cast Iron

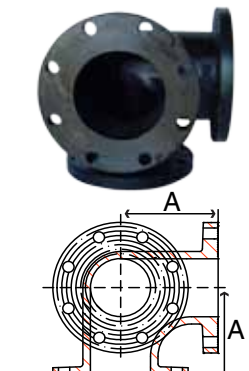
 	2	38BE1020D	4.50	4.12	-	19	150 lb. Ductile Iron
	2-1/2	38BE1024D	5.00	4.50	-	29	150 lb. Ductile Iron
	3	38BE1030D	5.50	4.88	-	35	150 lb. Ductile Iron
	4	38BE1040D	6.50	5.50	-	55	150 lb. Ductile Iron
	6	38BE1060D	8.00	7.00	-	85	150 lb. Ductile Iron
	8	38BE1080	9.00	8.75	-	145	125 lb. Cast Iron
	10	38BE1100	11.00	9.75	-	220	125 lb. Cast Iron
	12	38BE1120	12.00	11.25	-	324	125 lb. Cast Iron
	16	38BE1160	15.00	13.75	-	445	125 lb. Cast Iron

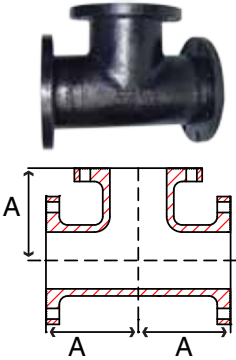
 	6x3	38BE1060030D	8.00	7.00	-	74	150 lb. Ductile Iron
	6x4	38BE1060040D	8.00	7.00	-	76	150 lb. Ductile Iron
	6x5	38BE1060050D	8.00	7.00	-	84	150 lb. Ductile Iron
	8x6	38BE1080060	9.00	8.75	-	120	125 lb. Cast Iron

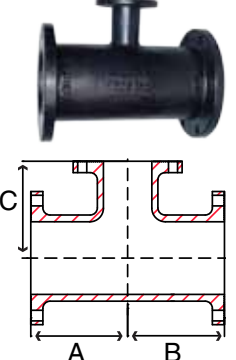
Part	Size	Part Number	Dimensions (in)			Weight (lb)	Material
			A	B	C		
	2	38F 1020D	2.50	-	-	12	150 lb. Ductile Iron
	2-1/2	38F 1024D	3.00	-	-	17	150 lb. Ductile Iron
	3	38F 1030D	3.00	-	-	20	150 lb. Ductile Iron
	4	38F 1040D	4.00	-	-	40	150 lb. Ductile Iron
	5	38F 1050D	4.50	-	-	45	150 lb. Ductile Iron
	6	38F 1060D	5.00	-	-	55	150 lb. Ductile Iron
	8	38F 1080	5.50	-	-	90	125 lb. Cast Iron
	10	38F 1100	6.50	-	-	135	125 lb. Cast Iron
	12	38F 1120	7.50	-	-	220	125 lb. Cast Iron
	14	38F 1140	7.50	-	-	220	125 lb. Cast Iron
	16	38F 1160	8.00	-	-	280	125 lb. Cast Iron
	18	38F 1180	8.50	-	-	325	125 lb. Cast Iron
	20	38F 1200	9.50	-	-	430	125 lb. Cast Iron
	24	38F 1240	11.00	-	-	630	125 lb. Cast Iron

	4	38TT1040D	4.00	-	-	40	150 lb. Ductile Iron
	6	38TT1060D	5.00	-	-	55	150 lb. Ductile Iron
	8	38TT1080	5.50	-	-	90	125 lb. Cast Iron
	10	38TT1100	6.50	-	-	130	125 lb. Cast Iron
	12	38TT1120	7.50	-	-	195	125 lb. Cast Iron

	3	38EL1030D	3.00	-	-	20	150 lb. Ductile Iron
	4	38EL1040D	4.00	-	-	40	150 lb. Ductile Iron
	6	38EL1060D	5.00	-	-	55	150 lb. Ductile Iron
	8	38EL1080	5.50	-	-	90	125 lb. Cast Iron
	10	38EL1100	6.50	-	-	135	125 lb. Cast Iron
	12	38EL1120	7.50	-	-	205	125 lb. Cast Iron

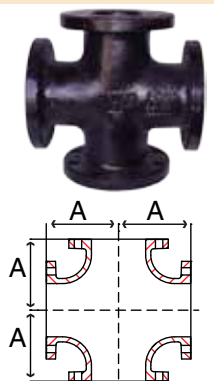
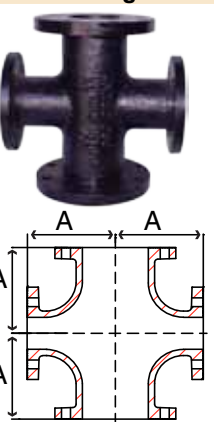
	4	38OE1040D	6.50	-	-	60	150 lb. Ductile Iron
	6	38OE1060D	8.00	-	-	95	150 lb. Ductile Iron


Part	Size	Part Number	Dimensions (in)			Weight (lb)	Material
			A	B	C		
	2	38T 1020D	4.50	-	-	20	150 lb. Ductile Iron
	2-1/2	38T 1024D	5.00	-	-	30	150 lb. Ductile Iron
	3	38T 1030D	5.50	-	-	40	150 lb. Ductile Iron
	4	38T 1040D	6.50	-	-	65	150 lb. Ductile Iron
	5	38T 1050D	7.50	-	-	85	150 lb. Ductile Iron
	6	38T 1060D	8.00	-	-	95	150 lb. Ductile Iron
	8	38T 1080	9.00	-	-	155	125 lb. Cast Iron
	10	38T 1100	11.00	-	-	270	125 lb. Cast Iron
	12	38T 1120	12.00	-	-	385	125 lb. Cast Iron
	14	38T 1140	14.00	-	-	435	125 lb. Cast Iron
	16	38T 1160	15.00	-	-	550	125 lb. Cast Iron
	18	38T 1180	16.50	-	-	665	125 lb. Cast Iron
	20	38T 1200	18.00	-	-	855	125 lb. Cast Iron
	24	38T 1240	22.00	-	-	1,330	125 lb. Cast Iron


Part	Size	Part Number	Dimensions (in)			Weight (lb)	Material
			A	B	C		
	2x1-1/2	38RT1020014D	4.50	4.50	4.50	29	150 lb. Ductile Iron
	2-1/2x1	38RT1024010D	5.00	5.00	5.00	29	150 lb. Ductile Iron
	2-1/2x1-1/2	38RT1024014D	5.00	5.00	5.00	29	150 lb. Ductile Iron
	2-1/2x2x2	38RT1024020020D	5.00	5.00	5.00	29	150 lb. Ductile Iron
	2-1/2x2	38RT1024020D	5.00	5.00	5.00	50	150 lb. Ductile Iron
	3x1	38RT1030010D	5.50	5.50	5.50	25	150 lb. Ductile Iron
	3x1-1/2	38RT1030014D	5.50	5.50	5.50	38	150 lb. Ductile Iron
	3x2	38RT1030020D	5.50	5.50	5.50	35	150 lb. Ductile Iron
	3x2-1/2	38RT1030024D	5.50	5.50	5.50	34	150 lb. Ductile Iron
	4x1-1/2	38RT1040014D	6.50	6.50	6.50	55	150 lb. Ductile Iron
	4x2x4	38RT1040020040D	6.50	6.50	6.50	50	150 lb. Ductile Iron
	4x2	38RT1040020D	6.50	6.50	6.50	50	150 lb. Ductile Iron
	4x2-1/2	38RT1040024D	6.50	6.50	6.50	55	150 lb. Ductile Iron
	4x3	38RT1040030D	6.50	6.50	6.50	60	150 lb. Ductile Iron
	4x3-1/2	38RT1040034D	6.50	6.50	6.50	55	150 lb. Ductile Iron
	5x2	38RT1050020D	7.50	7.50	7.50	85	150 lb. Ductile Iron
	5x2-1/2	38RT1050024D	7.50	7.50	7.50	85	150 lb. Ductile Iron
	5x3	38RT1050030D	7.50	7.50	7.50	85	150 lb. Ductile Iron
	5x3-1/2	38RT1050034D	7.50	7.50	7.50	85	150 lb. Ductile Iron
	5x4x4	38RT1050040040D	7.50	7.50	7.50	80	150 lb. Ductile Iron
	5x4	38RT1050040D	7.50	7.50	7.50	85	150 lb. Ductile Iron
	6x2	38RT1060020D	8.00	8.00	8.00	85	150 lb. Ductile Iron
	6x2-1/2	38RT1060024D	8.00	8.00	8.00	90	150 lb. Ductile Iron
	6x3x3	38RT1060030030D	8.00	8.00	8.00	85	150 lb. Ductile Iron
	6x3x5	38RT1060030050D	8.00	8.00	8.00	85	150 lb. Ductile Iron
	6x3	38RT1060030D	8.00	8.00	8.00	85	150 lb. Ductile Iron
	6x4x4	38RT1060040040D	8.00	8.00	8.00	90	150 lb. Ductile Iron
	6x4x5	38RT1060040050D	8.00	8.00	8.00	85	150 lb. Ductile Iron
	6x4x6	38RT1060040060D	8.00	8.00	8.00	95	150 lb. Ductile Iron
	6x4	38RT1060040D	8.00	8.00	8.00	90	150 lb. Ductile Iron
	6x5x3	38RT1060050030D	8.00	8.00	8.00	85	150 lb. Ductile Iron
	6x5x5	38RT1060050050D	8.00	8.00	8.00	85	150 lb. Ductile Iron
	6x5x6	38RT1060050060D	8.00	8.00	8.00	105	150 lb. Ductile Iron
	6x5	38RT1060050D	8.00	8.00	8.00	110	150 lb. Ductile Iron
8x2-1/2	38RT1080024	9.00	9.00	9.00	120	125 lb. Cast Iron	
8x3	38RT1080030	9.00	9.00	9.00	135	125 lb. Cast Iron	
8x4	38RT1080040	9.00	9.00	9.00	135	125 lb. Cast Iron	

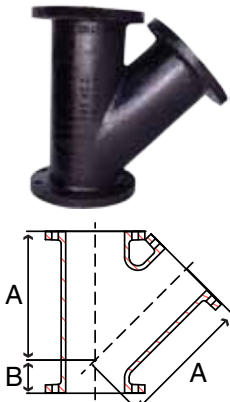
Part	Size	Part Number	Dimensions (in)			Weight (lb)	Material
			A	B	C		
	8x4x8	38RT1080040080	9.00	9.00	9.00	140	125 lb. Cast Iron
	8x5	38RT1080050	9.00	9.00	9.00	149	125 lb. Cast Iron
	8x6	38RT1080060	9.00	9.00	9.00	145	125 lb. Cast Iron
	8x6x6	38RT1080060060	9.00	9.00	9.00	145	125 lb. Cast Iron
	8x6x8	38RT1080060080	9.00	9.00	9.00	160	125 lb. Cast Iron
	10x3	38RT1100030	11.00	11.00	11.00	210	125 lb. Cast Iron
	10x4	38RT1100040	11.00	11.00	11.00	202	125 lb. Cast Iron
	10x6	38RT1100060	11.00	11.00	11.00	215	125 lb. Cast Iron
	10x8	38RT1100080	11.00	11.00	11.00	225	125 lb. Cast Iron
	10x8x8	38RT1100080080	11.00	11.00	11.00	240	125 lb. Cast Iron
	10x8x10	38RT1100080100	11.00	11.00	11.00	262	125 lb. Cast Iron
	10x10	38RT1120100	11.00	11.00	11.00	360	125 lb. Cast Iron
	12x4	38RT1120040	12.00	12.00	12.00	290	125 lb. Cast Iron
	12x5	38RT1120050	12.00	12.00	12.00	310	125 lb. Cast Iron
	12x6	38RT1120060	12.00	12.00	12.00	295	125 lb. Cast Iron
	12x8	38RT1120080	12.00	12.00	12.00	310	125 lb. Cast Iron
	14x4	38RT1140040	14.00	14.00	14.00	410	125 lb. Cast Iron
	14x6	38RT1140060	14.00	14.00	14.00	375	125 lb. Cast Iron
	14x8	38RT1140080	14.00	14.00	14.00	390	125 lb. Cast Iron
	14x10	38RT1140100	14.00	14.00	14.00	400	125 lb. Cast Iron
	14x12	38RT1140120	14.00	14.00	14.00	425	125 lb. Cast Iron
	16x4	38RT1160040	15.00	15.00	15.00	230	125 lb. Cast Iron
	16x8	38RT1160080	15.00	15.00	15.00	475	125 lb. Cast Iron
	16x10	38RT1160100	15.00	15.00	15.00	495	125 lb. Cast Iron
	16x12	38RT1160120	15.00	15.00	15.00	520	125 lb. Cast Iron
	16x14	38RT1160140	15.00	15.00	15.00	530	125 lb. Cast Iron
	18x6	38RT1180060	13.00	13.00	15.50	480	125 lb. Cast Iron
	18x8	38RT1180080	13.00	13.00	15.50	495	125 lb. Cast Iron
	18x12	38RT1180120	13.00	13.00	15.50	535	125 lb. Cast Iron
	20x6	38RT1200060	14.00	14.00	17.00	610	125 lb. Cast Iron
20x10	38RT1200100	14.00	14.00	17.00	635	125 lb. Cast Iron	
24x8	38RT1240080	15.00	15.00	19.00	860	125 lb. Cast Iron	
24x10	38RT1240100	15.00	15.00	19.00	880	125 lb. Cast Iron	
24x12	38RT1240120	15.00	15.00	19.00	890	125 lb. Cast Iron	
24x14	38RT1240140	15.00	15.00	19.00	900	125 lb. Cast Iron	
24x16	38RT1240160	15.00	15.00	19.00	915	125 lb. Cast Iron	
24x18	38RT1240180	22.00	22.00	22.00	1,220	125 lb. Cast Iron	
24x20	38RT1240200	22.00	22.00	22.00	1,255	125 lb. Cast Iron	

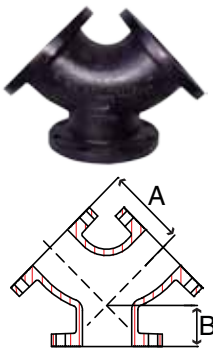
Part	Size	Part Number	A	B	C	Weight (lb)	Material
	4x6	38BT1040060D	8.00	8.00	-	88	150 lb. Ductile Iron
	6x8	38BT1060080	9.00	9.00	-	142	125 lb. Cast Iron
	8x10	38BT1080100	11.00	11.00	-	240	125 lb. Cast Iron

Part	Size	Part Number	Dimensions (in)			Weight (lb)	Material	
			A	B	C			
	<b>Cross</b>	2-1/2	38X 1024D	5.00	-	-	37	150 lb. Ductile Iron
	3	38X 1030D	5.50	-	-	50	150 lb. Ductile Iron	
	4	38X 1040D	6.50	-	-	80	150 lb. Ductile Iron	
	6	38X 1060D	8.00	-	-	120	150 lb. Ductile Iron	
	8	38X 1080	9.00	-	-	195	125 lb. Cast Iron	
	10	38X 1100	11.00	-	-	330	125 lb. Cast Iron	
	12	38X 1120	12.00	-	-	460	125 lb. Cast Iron	
	14	38X 1140	14.00	-	-	530	125 lb. Cast Iron	
	16	38X 1160	15.00	-	-	665	125 lb. Cast Iron	
	18	38X 1180	16.50	-	-	795	125 lb. Cast Iron	
	20	38X 1200	18.00	-	-	1,001	125 lb. Cast Iron	
	24	38X 1240	22.00	-	-	1,570	125 lb. Cast Iron	
		<b>Reducing Cross</b>	6x4	38RX1060040D	8.00	8.00	-	110
6x5		38RX1060050D	8.00	8.00	-	110	150 lb. Ductile Iron	
8x4		38RX1080040	9.00	9.00	-	155	125 lb. Cast Iron	
8x6		38RX1080060	9.00	9.00	-	165	125 lb. Cast Iron	
10x4		38RX1100040	11.00	11.00	-	220	125 lb. Cast Iron	
10x6		38RX1100060	11.00	11.00	-	240	125 lb. Cast Iron	
10x8		38RX1100080	11.00	11.00	-	265	125 lb. Cast Iron	
12x4		38RX1120040	12.00	12.00	-	310	125 lb. Cast Iron	
12x6		38RX1120060	12.00	12.00	-	320	125 lb. Cast Iron	
12x8		38RX1120080	12.00	12.00	-	345	125 lb. Cast Iron	
12x10		38RX1120100	12.00	12.00	-	415	125 lb. Cast Iron	
14x6		38RX1140060	14.00	14.00	-	425	125 lb. Cast Iron	
14x8		38RX1140080	14.00	14.00	-	425	125 lb. Cast Iron	
14x10		38RX1140100	14.00	14.00	-	460	125 lb. Cast Iron	
14x12		38RX1140120	14.00	14.00	-	505	125 lb. Cast Iron	
16x6		38RX1160060	15.00	15.00	-	490	125 lb. Cast Iron	
16x8		38RX1160080	15.00	15.00	-	520	125 lb. Cast Iron	
16x10		38RX1160100	15.00	15.00	-	555	125 lb. Cast Iron	
16x12		38RX1160120	15.00	15.00	-	605	125 lb. Cast Iron	
16x14		38RX1160140	15.00	15.00	-	620	125 lb. Cast Iron	
18x6		38RX1180060	13.00	15.50	-	610	125 lb. Cast Iron	
18x8		38RX1180080	13.00	15.50	-	610	125 lb. Cast Iron	
18x10		38RX1180100	13.00	15.50	-	560	125 lb. Cast Iron	
18x12		38RX1180120	13.00	15.50	-	610	125 lb. Cast Iron	
18x14		38RX1180140	16.50	16.50	-	680	125 lb. Cast Iron	
18x16		38RX1180160	16.50	16.50	-	700	125 lb. Cast Iron	
20x6		38RX1200060	14.00	17.00	-	745	125 lb. Cast Iron	
20x8		38RX1200080	14.00	17.00	-	760	125 lb. Cast Iron	
20x10		38RX1200100	14.00	17.00	-	685	125 lb. Cast Iron	
20x12		38RX1200120	14.00	17.00	-	735	125 lb. Cast Iron	
20x14		38RX1200140	14.00	17.00	-	745	125 lb. Cast Iron	
20x16		38RX1200160	18.00	18.00	-	915	125 lb. Cast Iron	
20x18		38RX1200180	18.00	18.00	-	945	125 lb. Cast Iron	
24x10		38RX1240100	15.00	19.00	-	895	125 lb. Cast Iron	
24x12	38RX1240120	15.00	19.00	-	960	125 lb. Cast Iron		
24x18	38RX1240180	22.00	22.00	-	1365	125 lb. Cast Iron		
20x8	38RX1200080	14.00	17.00	-	760	125 lb. Cast Iron		
20x10	38RX1200100	14.00	17.00	-	685	125 lb. Cast Iron		
20x12	38RX1200120	14.00	17.00	-	735	125 lb. Cast Iron		
20x14	38RX1200140	14.00	17.00	-	745	125 lb. Cast Iron		
20x16	38RX1200160	18.00	18.00	-	915	125 lb. Cast Iron		
20x18	38RX1200180	18.00	18.00	-	945	125 lb. Cast Iron		
24x10	38RX1240100	15.00	19.00	-	895	125 lb. Cast Iron		
24x12	38RX1240120	15.00	19.00	-	960	125 lb. Cast Iron		
24x18	38RX1240180	22.00	22.00	-	1365	125 lb. Cast Iron		
24x20	38RX1240200	22.00	22.00	-	1430	125 lb. Cast Iron		




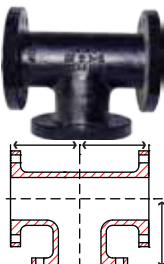

Part	Size	Part Number	Dimensions (in)			Weight (lb)	Material
			A	B	C		
	2X1-1/2	38CR1020014D	5.00	-	-	12	125 lb. Ductile Iron
	2-1/2x2	38CR1024020D	5.50	-	-	14	150 lb. Ductile Iron
	3x1-1/2	38CR1030014D	6.00	-	-	15	150 lb. Ductile Iron
	3x2	38CR1030020D	6.00	-	-	16	150 lb. Ductile Iron
	3x2-1/2	38CR1030024D	6.00	-	-	20	150 lb. Ductile Iron
	4x2	38CR1040020D	7.00	-	-	25	150 lb. Ductile Iron
	4x2-1/2	38CR1040024D	7.00	-	-	28	150 lb. Ductile Iron
	4x3	38CR1040030D	7.00	-	-	30	150 lb. Ductile Iron
	5x2	38CR1050020D	8.00	-	-	26	150 lb. Ductile Iron
	5x2-1/2	38CR1050024D	8.00	-	-	31	150 lb. Ductile Iron
	5x3	38CR1050030D	8.00	-	-	32	150 lb. Ductile Iron
	5x3-1/2	38CR1050034D	8.00	-	-	32	150 lb. Ductile Iron
	5x4	38CR1050040D	8.00	-	-	39	150 lb. Ductile Iron
	6x1-1/2	38CR1060014D	9.00	-	-	34	150 lb. Ductile Iron
	6x2	38CR1060020D	9.00	-	-	34	150 lb. Ductile Iron
	6x2-1/2	38CR1060024D	9.00	-	-	38	150 lb. Ductile Iron
	6x3	38CR1060030D	9.00	-	-	40	150 lb. Ductile Iron
	6x4	38CR1060040D	9.00	-	-	45	150 lb. Ductile Iron
	6x5	38CR1060050D	9.00	-	-	50	150 lb. Ductile Iron
	8x3	38CR1080030	11.00	-	-	60	125 lb. Cast Iron
	8x4	38CR1080040	11.00	-	-	65	125 lb. Cast Iron
	8x5	38CR1080050	11.00	-	-	70	125 lb. Cast Iron
	8x6	38CR1080060	11.00	-	-	75	125 lb. Cast Iron
	10x3	38CR1100030	12.00	-	-	85	125 lb. Cast Iron
	10x4	38CR1100040	12.00	-	-	85	125 lb. Cast Iron
	10x6	38CR1100060	12.00	-	-	93	125 lb. Cast Iron
	10x8	38CR1100080	12.00	-	-	109	125 lb. Cast Iron
	12x4	38CR1120040	14.00	-	-	130	125 lb. Cast Iron
	12x6	38CR1120060	14.00	-	-	130	125 lb. Cast Iron
	12x8	38CR1120080	14.00	-	-	151	125 lb. Cast Iron
	12x10	38CR1120100	14.00	-	-	170	125 lb. Cast Iron
	14x6	38CR1140060	16.00	-	-	185	125 lb. Cast Iron
	14x8	38CR1140080	16.00	-	-	175	125 lb. Cast Iron
	14x10	38CR1140100	16.00	-	-	194	125 lb. Cast Iron
14x12	38CR1140120	16.00	-	-	223	125 lb. Cast Iron	
16x6	38CR1160060	18.00	-	-	190	125 lb. Cast Iron	
16x8	38CR1160080	18.00	-	-	210	125 lb. Cast Iron	
16x10	38CR1160100	18.00	-	-	258	125 lb. Cast Iron	
16x12	38CR1160120	18.00	-	-	310	125 lb. Cast Iron	
16x14	38CR1160140	18.00	-	-	279	125 lb. Cast Iron	
18x6	38CR1180060	19.00	-	-	195	125 lb. Cast Iron	
18x8	38CR1180080	19.00	-	-	240	125 lb. Cast Iron	
18x10	38CR1180100	19.00	-	-	265	125 lb. Cast Iron	
18x12	38CR1180120	19.00	-	-	295	125 lb. Cast Iron	
18x14	38CR1180140	19.00	-	-	310	125 lb. Cast Iron	
18x16	38CR1180160	19.00	-	-	340	125 lb. Cast Iron	
20x6	38CR1200060	20.00	-	-	345	125 lb. Cast Iron	
20x8	38CR1200080	20.00	-	-	345	125 lb. Cast Iron	
20x10	38CR1200100	20.00	-	-	345	125 lb. Cast Iron	
20x12	38CR1200120	20.00	-	-	345	125 lb. Cast Iron	
20x14	38CR1200140	20.00	-	-	355	125 lb. Cast Iron	
20x16	38CR1200160	20.00	-	-	390	125 lb. Cast Iron	
20x18	38CR1200180	20.00	-	-	410	125 lb. Cast Iron	
24x8	38CR1240080	24.00	-	-	420	125 lb. Cast Iron	
24x10	38CR1240100	24.00	-	-	460	125 lb. Cast Iron	
24x12	38CR1240120	24.00	-	-	480	125 lb. Cast Iron	
24x14	38CR1240140	24.00	-	-	490	125 lb. Cast Iron	
24x16	38CR1240160	24.00	-	-	525	125 lb. Cast Iron	
24x18	38CR1240180	24.00	-	-	550	125 lb. Cast Iron	
24x20	38CR1240200	24.00	-	-	590	125 lb. Cast Iron	

Part	Size	Part Number	Dimensions (in)			Weight (lb)	Material
			A	B	C		
	3x2	38ER1030020D	6.00	-	-	16	150 lb. Ductile Iron
	3x2-1/2	38ER1030024D	6.00	-	-	20	150 lb. Ductile Iron
	4x2	38ER1040020D	7.00	-	-	25	150 lb. Ductile Iron
	4x2-1/2	38ER1040024D	7.00	-	-	28	150 lb. Ductile Iron
	4x3	38ER1040030D	7.00	-	-	30	150 lb. Ductile Iron
	5x2-1/2	38ER1050024D	8.00	-	-	35	150 lb. Ductile Iron
	5x3	38ER1050030D	8.00	-	-	35	150 lb. Ductile Iron
	5x4	38ER1050040D	8.00	-	-	39	150 lb. Ductile Iron
	6x2	38ER1060020D	9.00	-	-	35	150 lb. Ductile Iron
	6x2-1/2	38ER1060024D	9.00	-	-	38	150 lb. Ductile Iron
	6x3	38ER1060030D	9.00	-	-	40	150 lb. Ductile Iron
	6x4	38ER1060040D	9.00	-	-	45	150 lb. Ductile Iron
	6x5	38ER1060050D	9.00	-	-	50	150 lb. Ductile Iron
	8x4	38ER1080040	11.00	-	-	65	125 lb. Cast Iron
	8x5	38ER1080050	11.00	-	-	70	125 lb. Cast Iron
	8x6	38ER1080060	11.00	-	-	75	125 lb. Cast Iron
	10x4	38ER1100040	12.00	-	-	85	125 lb. Cast Iron
	10x6	38ER1100060	12.00	-	-	90	125 lb. Cast Iron
	10x8	38ER1100080	12.00	-	-	110	125 lb. Cast Iron
	12x6	38ER1120060	14.00	-	-	130	125 lb. Cast Iron
12x8	38ER1120080	14.00	-	-	150	125 lb. Cast Iron	
12x10	38ER1120100	14.00	-	-	170	125 lb. Cast Iron	
14x10	38ER1140100	16.00	-	-	190	125 lb. Cast Iron	
14x12	38ER1140120	16.00	-	-	220	125 lb. Cast Iron	
16x12	38ER1160120	18.00	-	-	285	125 lb. Cast Iron	
20x14	38ER1200140	20.00	-	-	355	125 lb. Cast Iron	

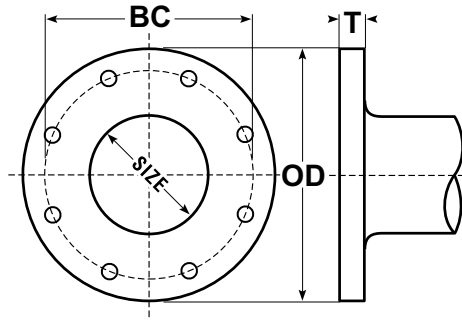
Part	Size	Part Number	A	B	C	Weight (lb)	Material
	3	38LT1030D	10.00	3.00	-	45	150 lb. Ductile Iron
	4	38LT1040D	12.00	3.00	-	75	150 lb. Ductile Iron
	6	38LT1060D	14.50	3.50	-	120	150 lb. Ductile Iron
	8	38LT1080	17.50	4.50	-	200	125 lb. Cast Iron
	10	38LT1100	20.50	5.00	-	335	125 lb. Cast Iron
	12	38LT1120	24.50	5.50	-	515	125 lb. Cast Iron
	16	38LT1160	30.00	6.50	-	805	125 lb. Cast Iron

Part	Size	Part Number	A	B	C	Weight (lb)	Material
	4	38Y 1040D	6.50	3.00	-	66	150 lb. Ductile Iron
	6	38Y 1060D	8.00	3.50	-	101	150 lb. Ductile Iron
	12	38Y 1120	12.00	5.50	-	265	125 lb. Cast Iron

## 250 lb Extra Heavy Cast Iron Flanged Fittings

Part	Size	Part Number	Dimensions (in)			Weight (lb)	Material
			A	B	C		
	3	38E 2030	6.00	-	-	40	250 lb. Cast Iron
	4	38E 2040	7.00	-	-	65	250 lb. Cast Iron
	6	38E 2060	8.50	-	-	105	250 lb. Cast Iron
	8	38E 2080	10.00	-	-	185	250 lb. Cast Iron
	10	38E 2100	11.50	-	-	296	250 lb. Cast Iron
	12	38E 2120	13.00	-	-	410	250 lb. Cast Iron
	3x2-1/2	38RE2030024	6.00	-	-	35	250 lb. Cast Iron
	4x2-1/2	38RE2040024	7.00	-	-	48	250 lb. Cast Iron
	6x4	38RE2060040	8.50	-	-	95	250 lb. Cast Iron
	8x6	38RE2080060	10.00	-	-	161	250 lb. Cast Iron
	10x8	38RE2100080	11.50	-	-	240	250 lb. Cast Iron
	3	38F 2030	3.50	-	-	35	250 lb. Cast Iron
	4	38F 2040	4.50	-	-	58	250 lb. Cast Iron
	6	38F 2060	5.50	-	-	103	250 lb. Cast Iron
	8	38F 2080	6.00	-	-	158	250 lb. Cast Iron
	2-1/2	38T 2024	5.50	-	-	46	250 lb. Cast Iron
	3	38T 2030	6.00	-	-	58	250 lb. Cast Iron
	4	38T 2040	7.00	-	-	99	250 lb. Cast Iron
	5	38T 2050	8.00	-	-	135	250 lb. Cast Iron
	6	38T 2060	8.50	-	-	180	250 lb. Cast Iron
	8	38T 2080	10.00	-	-	280	250 lb. Cast Iron
	12	38T 2120	13.00	-	-	620	250 lb. Cast Iron
	3x2	38CR2030020	6.00	-	-	25	250 lb. Cast Iron
	3x2-1/2	38CR2030024	6.00	-	-	29	250 lb. Cast Iron
	4x2	38CR2040020	7.00	-	-	36	250 lb. Cast Iron
	4x3	38CR2040030	7.00	-	-	45	250 lb. Cast Iron
	6x4	38CR2060040	9.00	-	-	77	250 lb. Cast Iron
	6x5	38CR2060050	9.00	-	-	85	250 lb. Cast Iron
	8x6	38CR2080060	11.00	-	-	130	250 lb. Cast Iron
	10x8	38CR2100080	12.00	-	-	190	250 lb. Cast Iron
12x10	38CR2120100	14.00	-	-	268	250 lb. Cast Iron	

Pipe Size	Black	Galvanized	Outside Diameter (OD)	Bolt Circumference (BC)	Thickness (T)	Bolt Hole Size	Number of Bolt Holes	Weight (lb)
-----------	-------	------------	-----------------------	-------------------------	---------------	----------------	----------------------	-------------



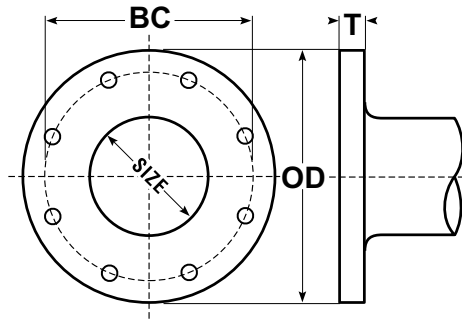
**125 lb. Blind Flanges**

1	17BL1010	18BL1010	4.25	3.12	0.44	5/8	4	2
1-1/4	17BL1012	18BL1012	4.62	3.50	0.50	5/8	4	2
1-1/2	17BL1014	18BL1014	5.00	3.88	0.56	5/8	4	4
2	17BL1020	18BL1020	6.00	4.75	0.62	3/4	4	5
2-1/2	17BL1024	18BL1024	7.00	5.50	0.69	3/4	4	7
3	17BL1030	18BL1030	7.50	6.00	0.75	3/4	4	9
3-1/2	17BL1034	18BL1034	8.50	7.00	0.81	3/4	8	14
4	17BL1040	18BL1040	9.00	7.50	0.94	3/4	8	15
5	17BL1050	18BL1050	10.00	8.50	0.94	7/8	8	18
6	17BL1060	18BL1060	11.00	9.50	1.00	7/8	8	23
8	17BL1080	18BL1080	13.50	11.75	1.12	7/8	8	37
10	17BL1100	18BL1100	16.00	14.25	1.19	1	12	59
12	17BL1120	18BL1120	19.00	17.00	1.25	1	12	89
14	17BL1140	-	21.00	18.75	1.38	1-1/8	12	101
16	17BL1160	-	23.50	21.25	1.44	1-1/8	16	152
18	17BL1180	-	25.00	22.75	1.56	1-1/4	16	172
20	17BL1200	-	27.50	25.00	1.69	1-1/4	20	226
24	17BL1240	-	32.00	29.50	1.88	1-3/8	20	355
30	17BL1300	-	38.75	36.00	2.12	1-3/8	28	

**125 lb. Threaded Companion Flanges**

1/2	17TH1004	18TH1004	3.50	2.38		5/8	4	1
3/4	17TH1006	18TH1006	3.89	2.75		5/8	4	1
1	17TH1010	18TH1010	4.25	3.12	0.44	5/8	4	1
1-1/4	17TH1012	18TH1012	4.62	3.50	0.50	5/8	4	2
1-1/2	17TH1014	18TH1014	5.00	3.88	0.56	5/8	4	3
2	17TH1020	18TH1020	6.00	4.75	0.62	3/4	4	4
2-1/2	17TH1024	18TH1024	7.00	5.50	0.69	3/4	4	6
3	17TH1030	18TH1030	7.50	6.00	0.75	3/4	4	8
4	17TH1040	18TH1040	9.00	7.50	0.94	3/4	8	12
5	17TH1050	18TH1050	10.00	8.50	0.94	7/8	8	14
6	17TH1060	18TH1060	11.00	9.50	1.00	7/8	8	16
8	17TH1080	18TH1080	13.50	11.75	1.12	7/8	8	28
10	17TH1100	18TH1100	16.00	14.25	1.19	1	12	38
12	17TH1120	18TH1120	19.00	17.00	1.25	1	12	55
16	17TH1160	-	23.50	21.25	1.44	1-1/8	16	100

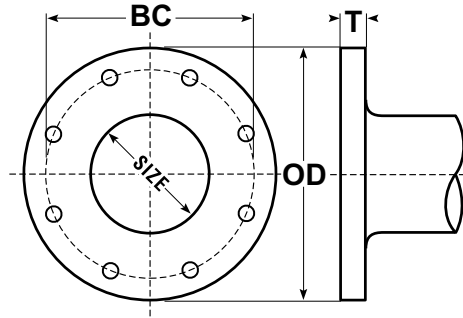
Pipe Size	Black	Galvanized	Outside Diameter (OD)	Bolt Circumference (BC)	Thickness (T)	Bolt Hole Size	Number of Bolt Holes	Weight (lb)
-----------	-------	------------	-----------------------	-------------------------	---------------	----------------	----------------------	-------------



**125 lb. Reducing Companion Flanges**

1x4-5/8	17RT1010045	-	4.62	3.50	0.50	5/8	4	3
1x5	17RT1010050	-	5.00	3.88	0.56	5/8	4	3
1x6	17RT1010060	18RT1010060	6.00	4.75	0.62	3/4	4	5
1x7	17RT1010070	-	7.00	5.50	0.69	3/4	4	7
1-1/4x6	17RT1012060	-	6.00	6.00	0.75	3/4	4	4
1-1/2x6	17RT1014060	18RT1014060	6.00	6.00	0.75	3/4	4	4
1-1/2x7	17RT1014070	18RT1014070	7.00	5.50	0.69	3/4	4	6
1-1/2x7-1/2	17RT1014074	-	7.50	6.00	0.75	3/4	4	9
1-1/2x9	17RT1014090	-	9.00	7.50	0.94	3/4	8	15
1-1/2x10	17RT1014100	-	10.00	8.50	0.94	7/8	8	19
1-1/2x11	17RT1014110	-	11.00	9.50	1.00	7/8	8	24
2x7	17RT1020070	18RT1020070	7.00	5.50	0.69	3/4	4	7
2x7-1/2	17RT1020074	18RT1020074	7.50	6.00	0.75	3/4	4	8
2x8-1/2	17RT1020084	-	8.50	7.00	0.81	3/4	8	10
2x9	17RT1020090	18RT1020090	9.00	7.50	0.94	3/4	8	16
2x10	17RT1020100	-	10.00	8.50	0.94	7/8	8	17
2x11	17RT1020110	18RT1020110	11.00	9.50	1.00	7/8	8	23
2x13-1/2	17RT1020134	-	13.50	11.75	1.12	7/8	8	44
2x16	17RT1020160	-	16.00	14.25	1.19	1	12	60
2x19	17RT1020190	-	19.00	17.00	1.25	1	12	87
2-1/2x7-1/2	17RT1024074	18RT1024074	7.50	6.00	0.75	3/4	4	8
2-1/2x9	17RT1024090	18RT1024090	9.00	7.50	0.94	3/4	8	13
2-1/2x10	17RT1024100	-	10.00	8.50	0.94	7/8	8	18
2-1/2x11	17RT1024110	18RT1024110	11.00	9.50	1.00	7/8	8	22
2-1/2x13-1/2	17RT1024134	-	13.50	11.75	1.12	7/8	8	40
3x9	17RT1030090	18RT1030090	9.00	7.50	0.94	3/4	8	13
3x10	17RT1030100	-	10.00	8.50	0.94	7/8	8	17
3x11	17RT1030110	-	11.00	9.50	1.00	7/8	8	21
3x13-1/2	17RT1030134	-	13.50	11.75	1.12	7/8	8	37
3-1/2x11	17RT1034110	-	11.00	9.50	1.00	7/8	8	22
3-1/2x13-1/2	17RT1034134	-	13.50	11.75	1.12	7/8	8	39
4x10	17RT1040100	18RT1040100	10.00	8.50	0.94	7/8	8	14
4x11	17RT1040110	18RT1040110	11.00	9.50	1.00	7/8	8	21
4x13-1/2	17RT1040134	18RT1040134	13.50	11.75	1.12	7/8	8	35
5x11	17RT1050110	18RT1050110	11.00	9.50	1.00	7/8	8	20
5x13-1/2	17RT1050134	-	13.50	11.75	1.12	7/8	8	32
6x13-1/2	17RT1060134	18RT1060134	13.50	11.75	1.12	7/8	8	30
6x16	17RT1060160	-	16.00	14.25	1.19	1	12	55
8x16	17RT1080160	-	16.00	14.25	1.19	1	12	45
8x19	17RT1080190	-	19.00	17.00	1.25	1	12	76
10x19	17RT1100190	-	19.00	17.00	1.25	1	12	68

Pipe Size	Black	Galvanized	Outside Diameter (OD)	Bolt Circumference (BC)	Thickness (T)	Bolt Hole Size	Number of Bolt Holes	Weight (lb)
-----------	-------	------------	-----------------------	-------------------------	---------------	----------------	----------------------	-------------



**250 lb. Blind Flanges**

2	17BL2020	-	6.50	5.00	0.88	3/4	8	8
2-1/2	17BL2024	-	7.50	5.88	1.00	5/8	8	12
3	17BL2030	-	8.25	6.62	1.12	5/8	8	16
4	17BL2040	-	10.00	7.88	1.25	5/8	8	27
5	17BL2050	-	11.00	9.25	1.38	5/8	8	35
6	17BL2060	-	12.50	10.60	1.44	5/8	12	50
8	17BL2080	-	15.00	13.00	1.62	1	12	81
10	17BL2100	-	17.50	15.25	1.88	1-1/8	16	115

**250 lb. Threaded Companion Flanges**

2	17TH2020	18TH2020	6.50	5.00	0.88	3/4	8	7
2-1/2	17TH2024	18TH2024	7.50	5.88	1.00	5/8	8	10
3	17TH2030	18TH2030	8.25	6.62	1.12	5/8	8	14
4	17TH2040	18TH2040	10.00	7.88	1.25	5/8	8	24
6	17TH2060	-	12.50	10.60	1.44	5/8	12	39
8	17TH2080	-	15.00	13.00	1.62	1	12	58

All 250 lb. Flanges have 1/16" raised face

# Notes



**Forged Steel Fittings & Outlets**

1/8" – 4" Threaded & S/W  
2000#, 3000#, 6000#



**COOPLOK™ Grooved**

UL/FM Couplings – Flexible & Rigid  
Mechanical Tees, Fittings & Flanged Adapters



**Ductile Iron Threaded Fittings**

1/2" – 2-1/2" Class 300  
UL/FM @ 500 PSI



**Merchant Steel Couplings & Fittings**

1/8" – 12" STD-XH  
Full, Half, API Style



**Valves**

Carbon Steel – Stainless – Brass  
1/4" – 4"



**Cast Iron Threaded Fittings**

1/2" – 2-1/2" Class 125  
UL/FM @ 300 PSI



**Malleable Iron Pipe Fittings**

1/8" – 8" Black & Galvanized  
UL/FM 150# & 300#



**Bronze Fittings & Flanges  
Brass Nipples & Pipe**

1/8" – 6" 125#



**COOPLET® Weld Outlets  
and Adapter Nipples**

UL/FM 300# Welded Outlet  
Threaded 1/2" to 4", Grooved 1-1/4" to 6"



**Cast Iron Flanged Fittings & Flanges**

Flanged Fittings 1" to 30", 125# & 250#  
Cast Iron 125#, 250#, Flanges  
Blind, Threaded, Reducing Threaded



**Butterfly & Gate Valves**

Lug & Wafer Flanged, Mechanical  
Joint, Threaded,  
Push-On, Check



**Nipples**

1/8" – 8" Black & Galvanized  
Welded – Seamless  
Schedule 40, 80, and XXH, Brass Schedule 40

**SMITH-COOPER®**

I N T E R N A T I O N A L

2867 VAIL AVENUE, COMMERCE, CA 90040 TEL (800) 766-0076 LOCAL (323) 890-4455 FAX (323) 890-4456

WWW.SMITHCOOPER.COM